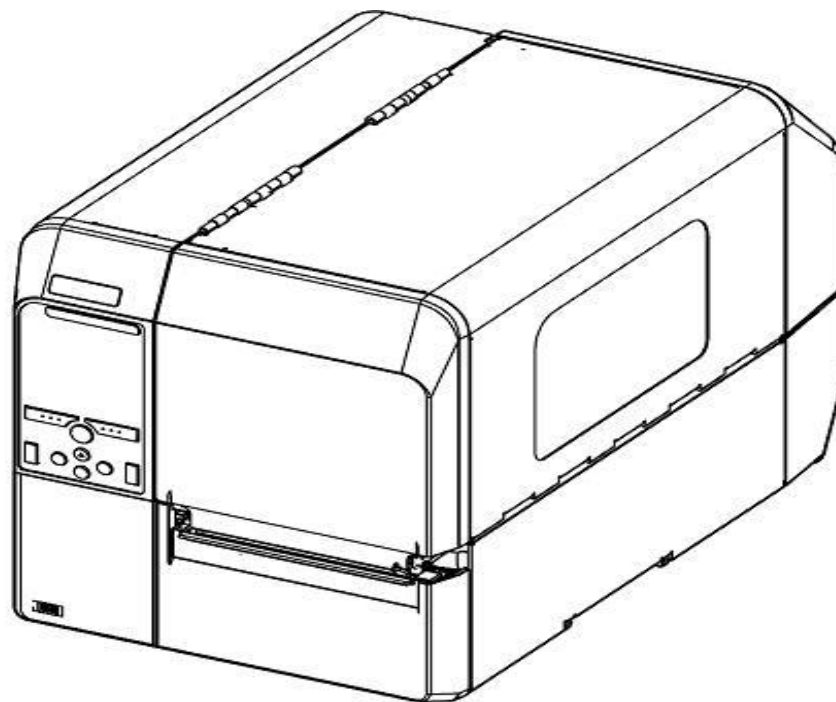




CL6NX SERVICE PARTS LIST

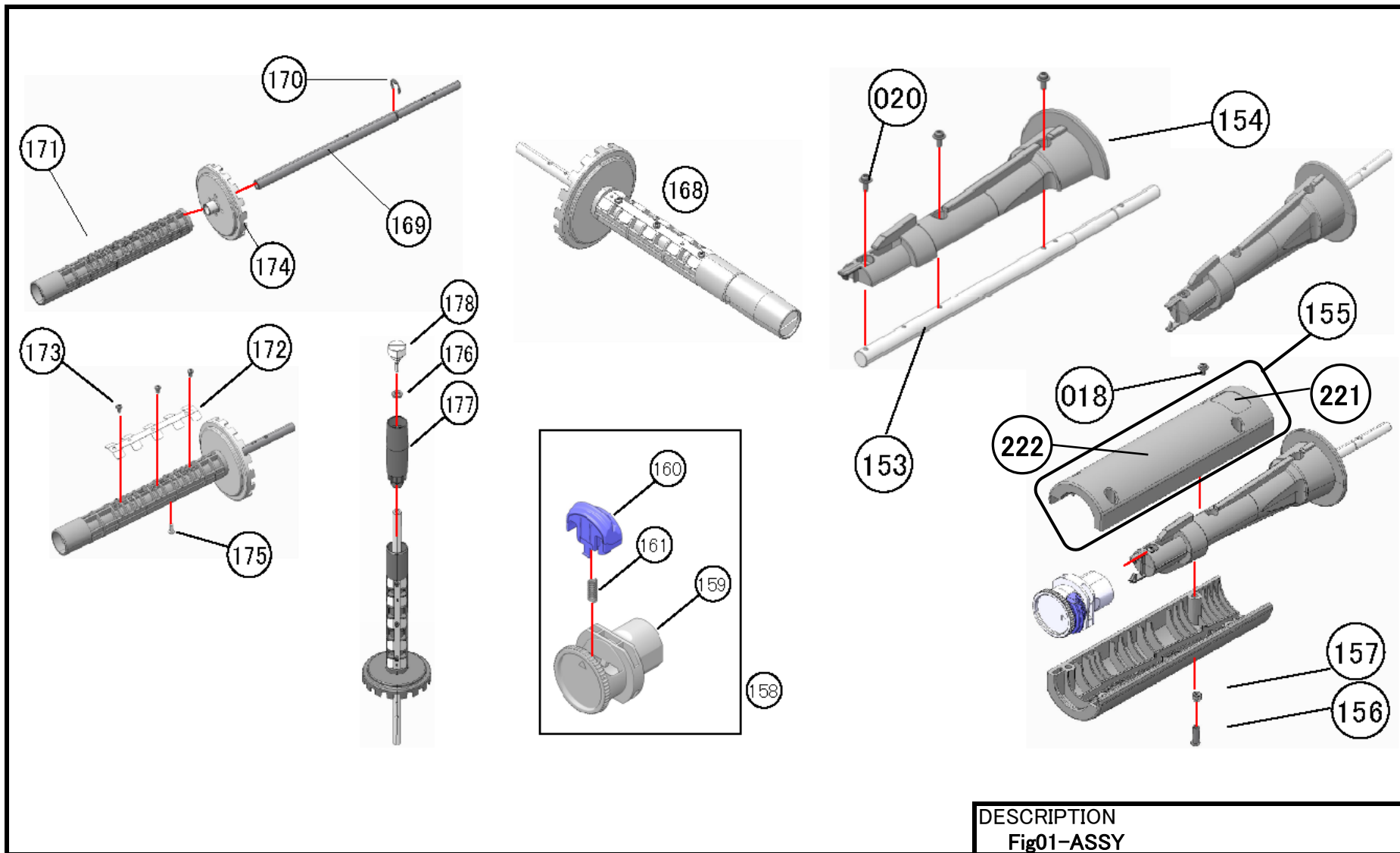


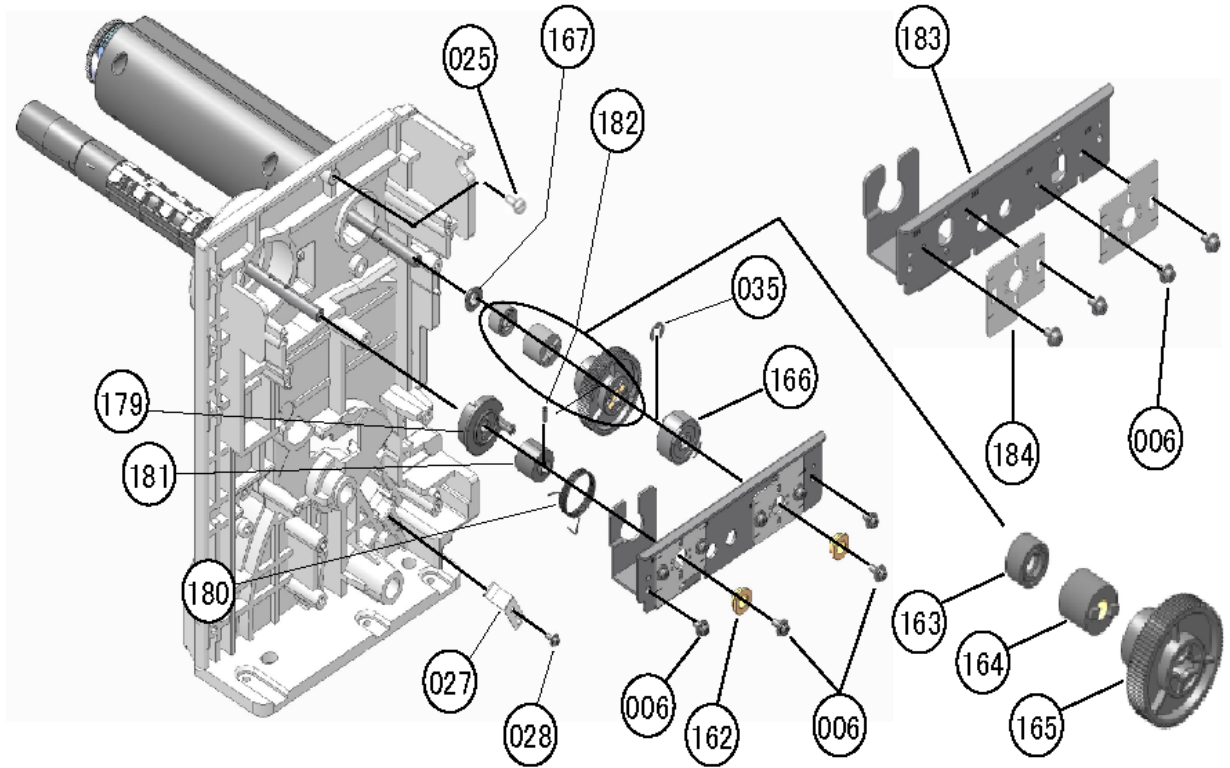
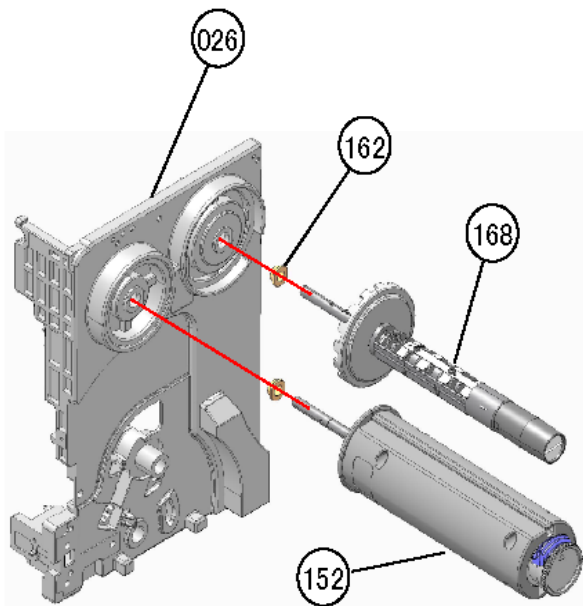
発行

WWCL9000
WWCL91000

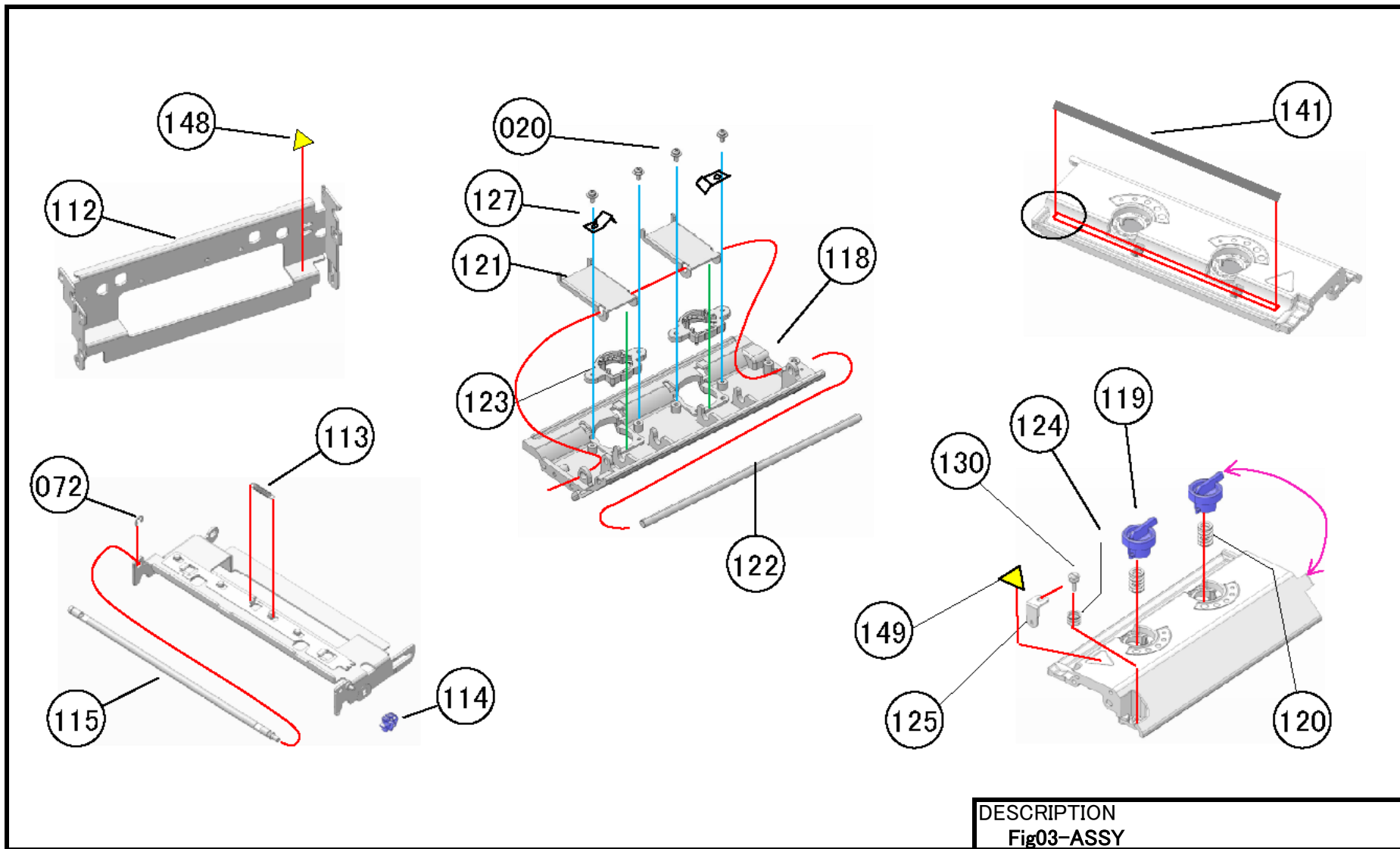
RV01521

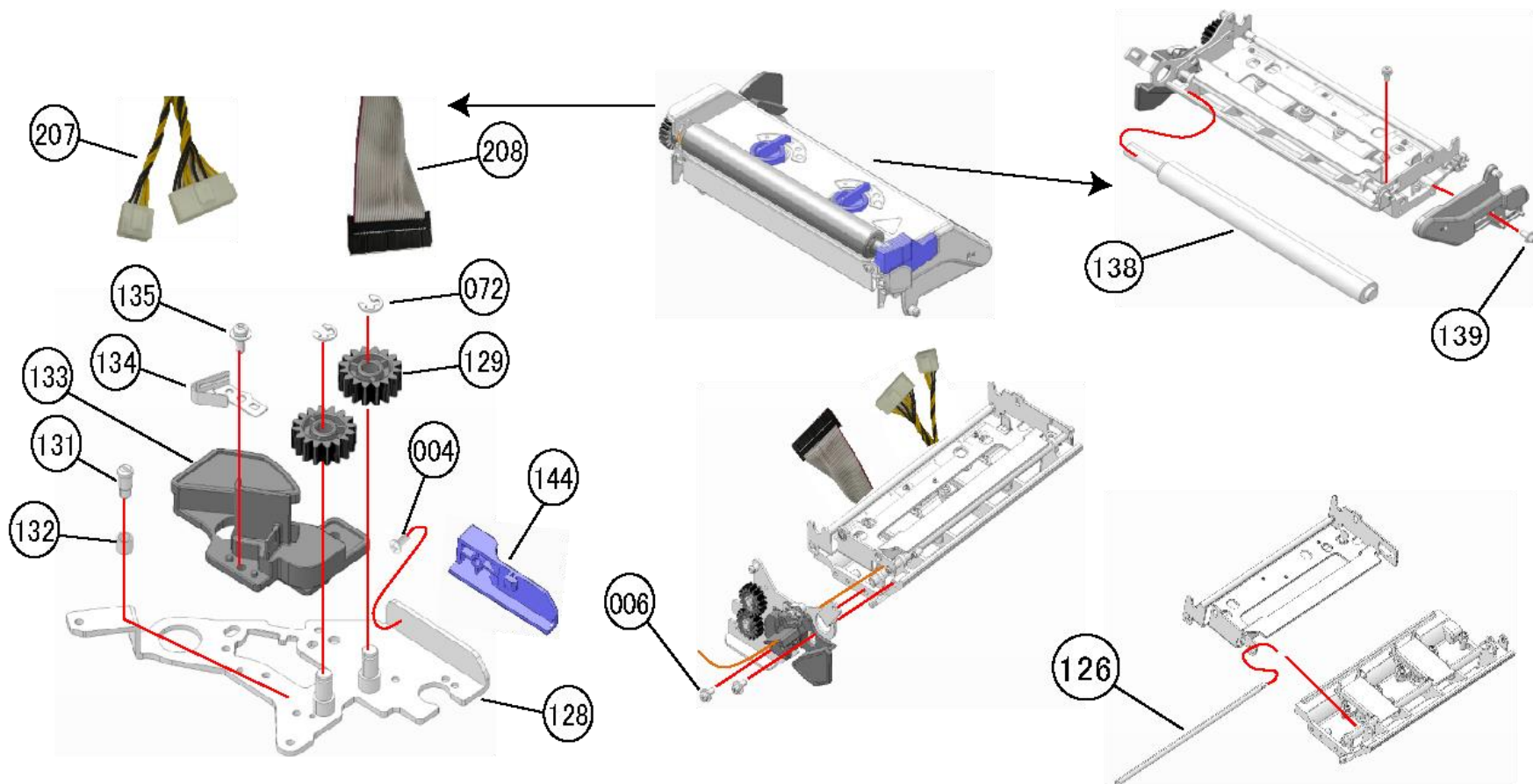
SATO CORPORATION . TOKYO. JAPAN



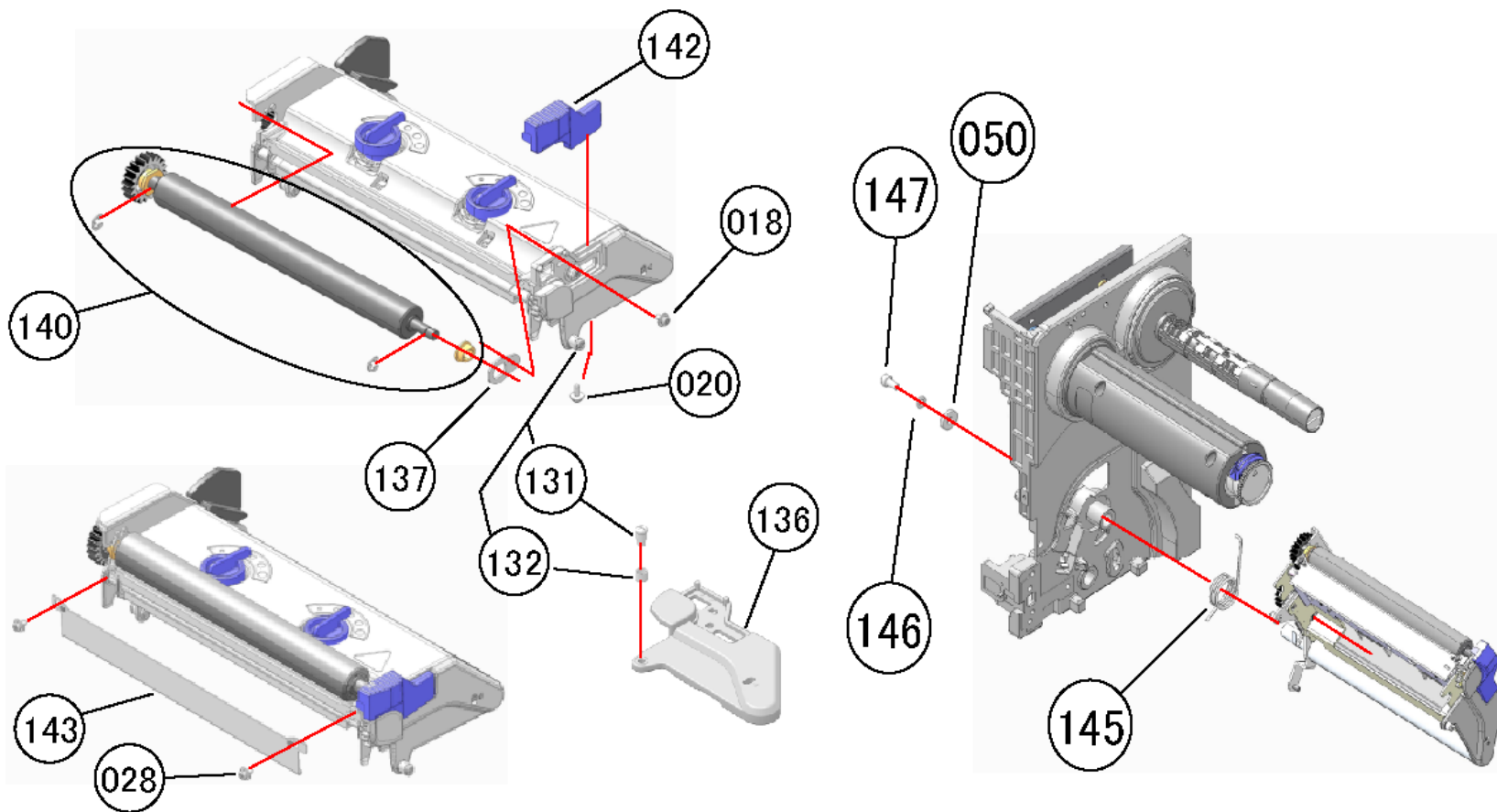


DESCRIPTION
Fig02-ASSY

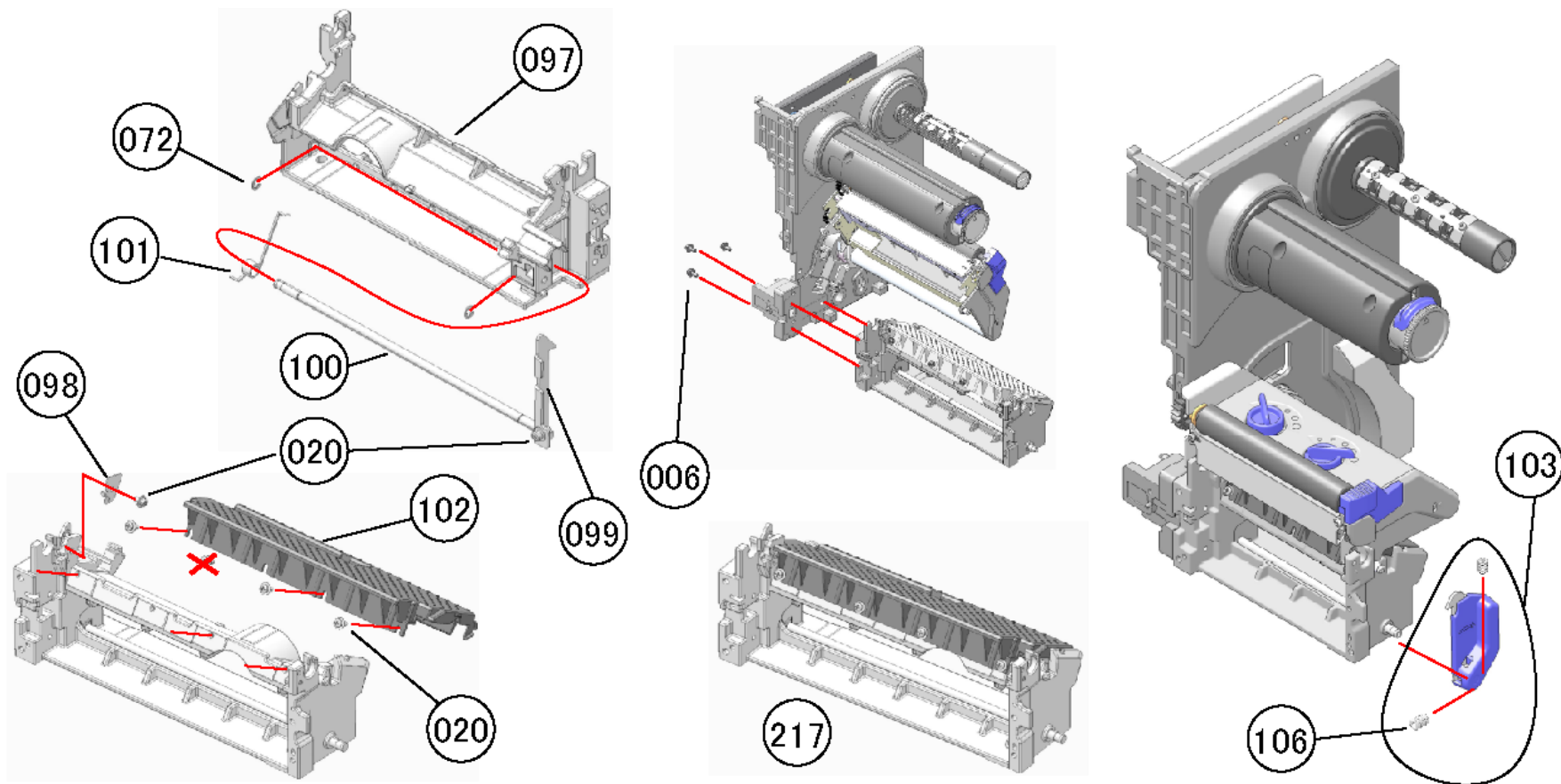




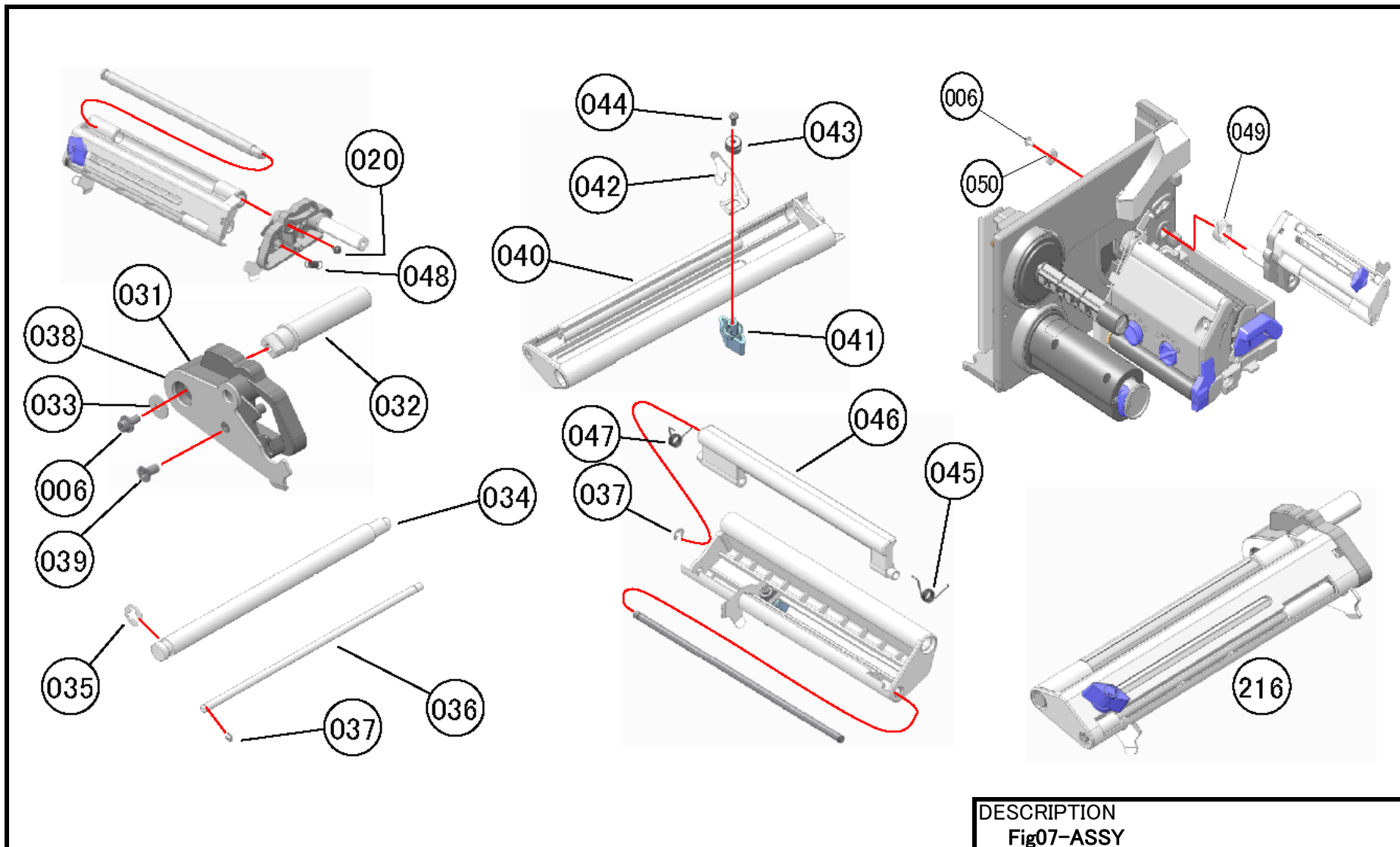
DESCRIPTION
Fig04-ASSY

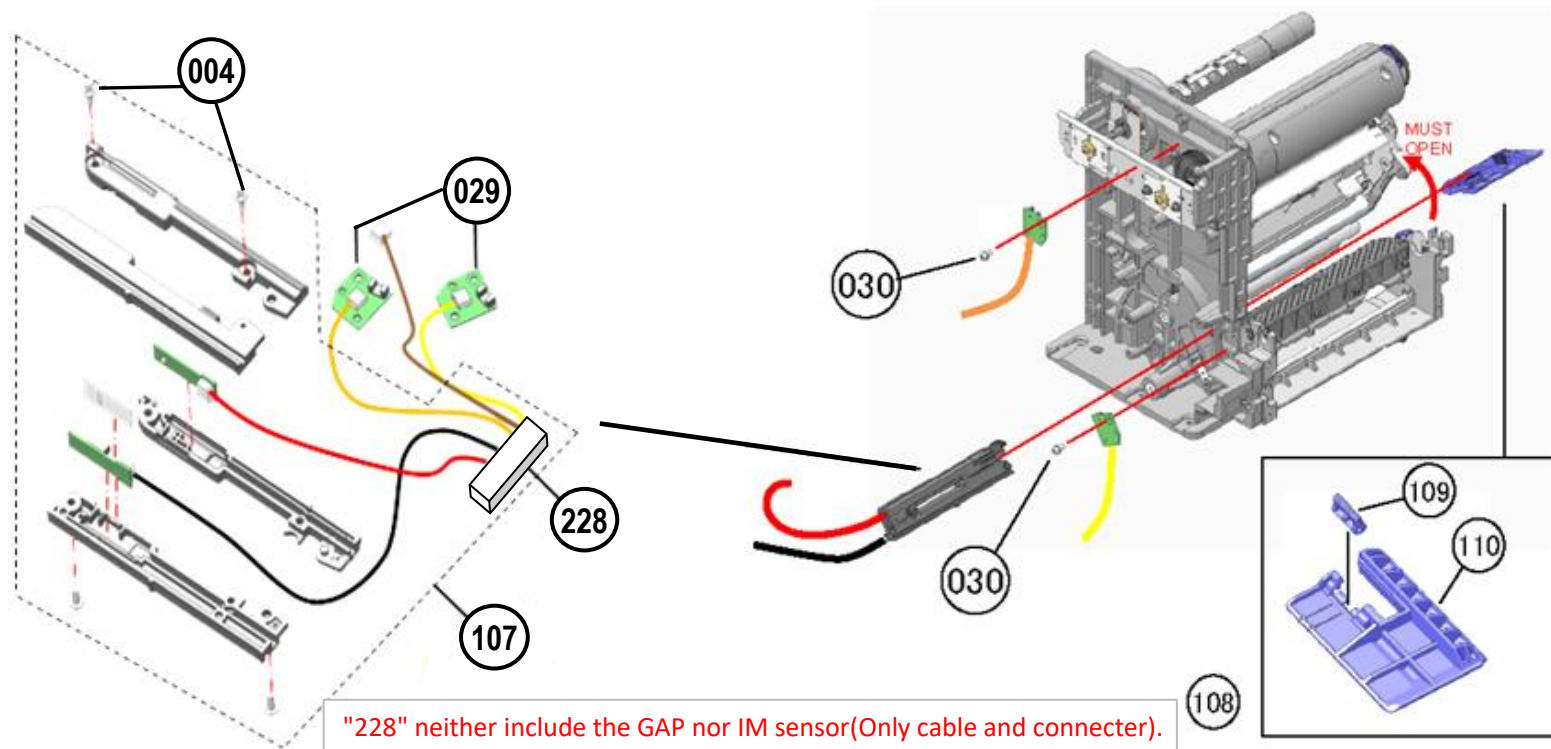


DESCRIPTION
Fig05-ASSY



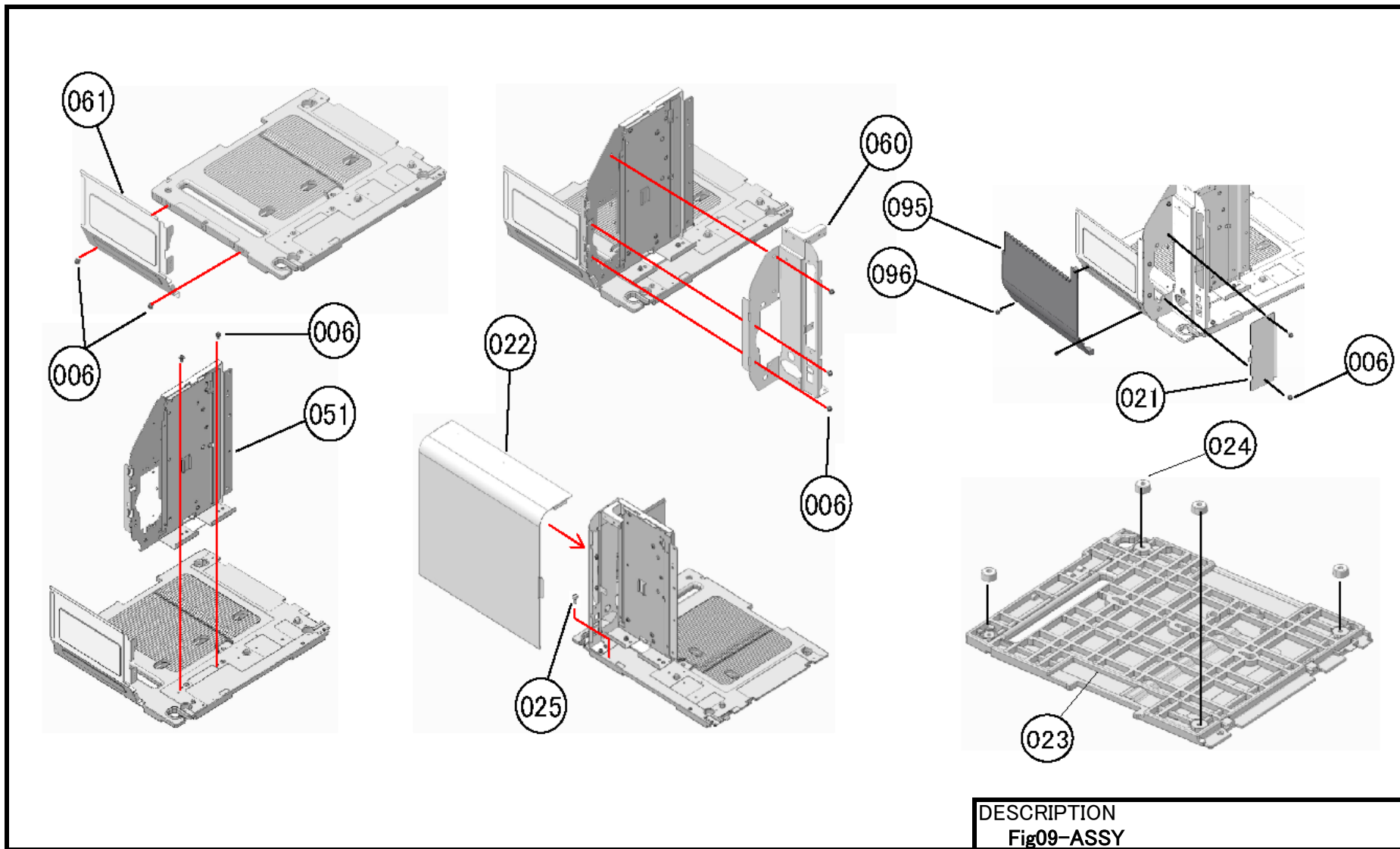
DESCRIPTION
Fig06-ASSY

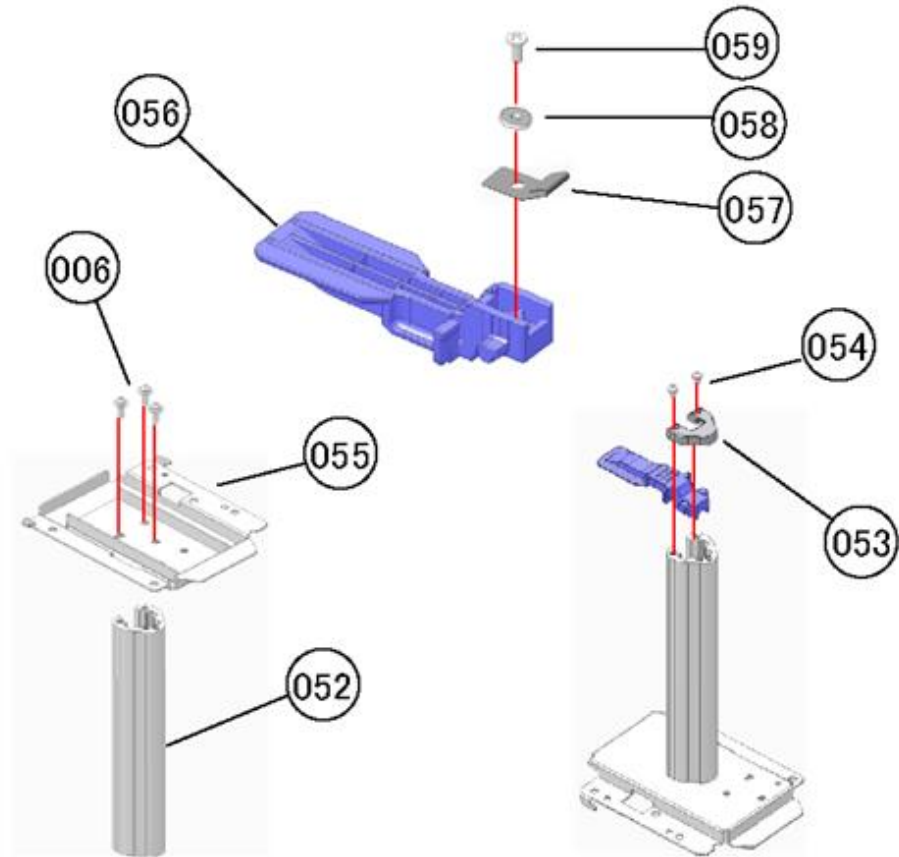
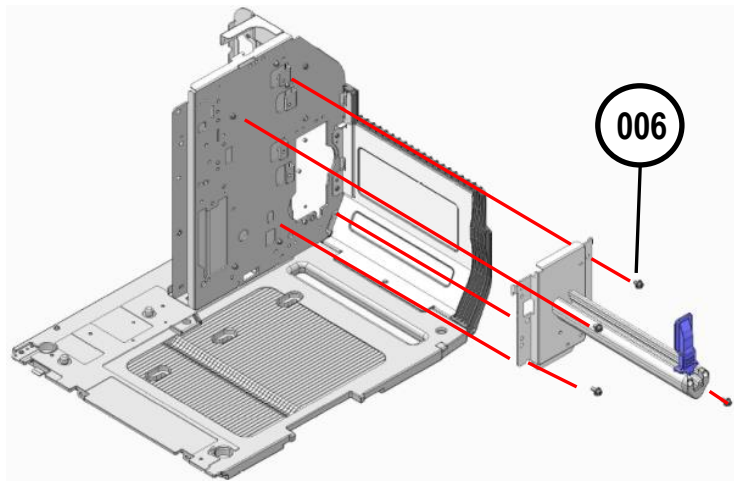
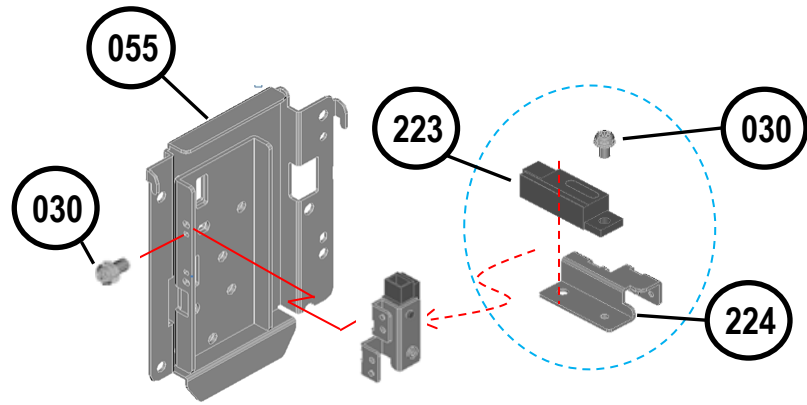




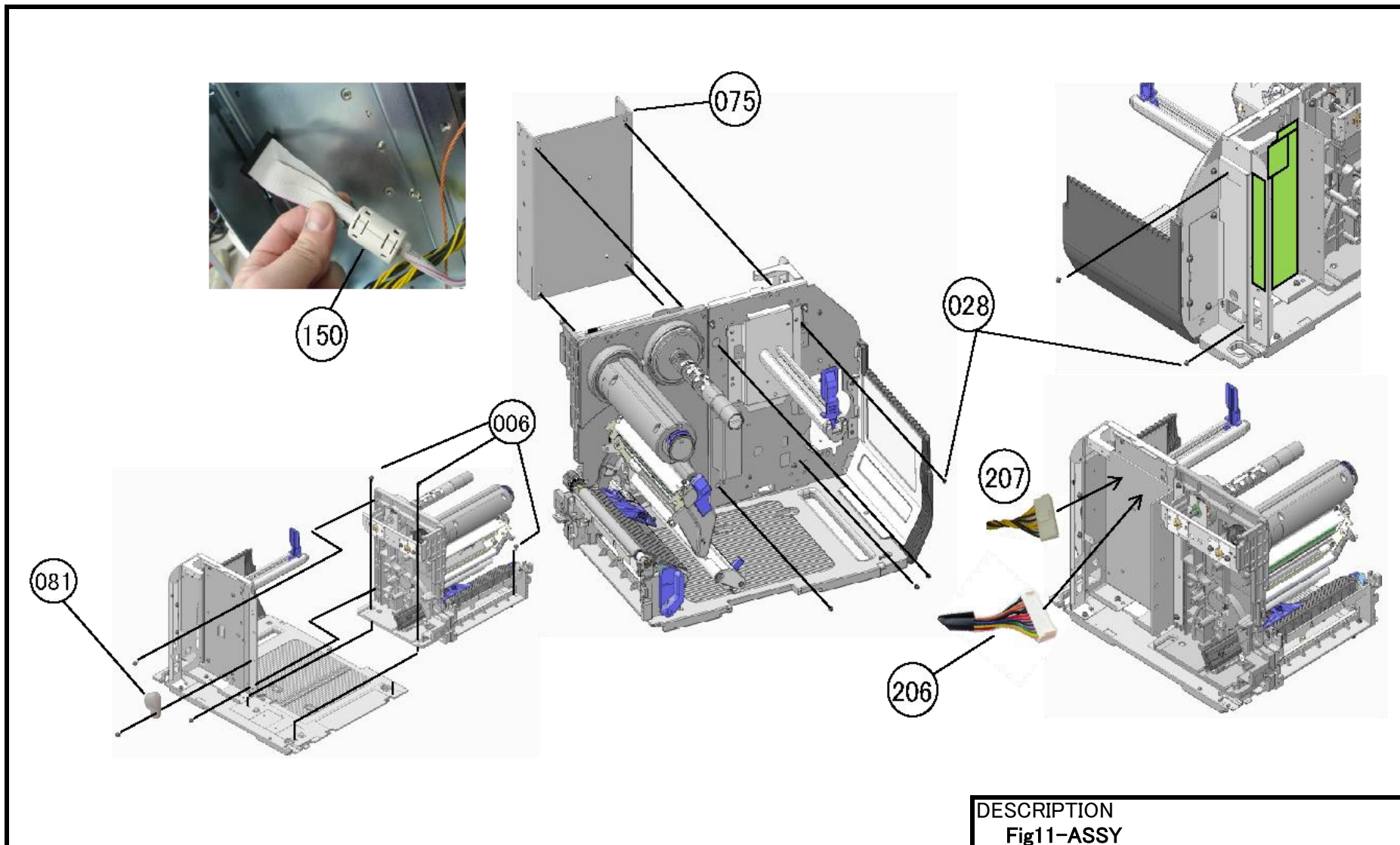
"228" neither include the GAP nor IM sensor(Only cable and connector).
"107" includes the GAP and IM sensor.
Neither the GAP nor IM sensor can be ordered as a single unit.

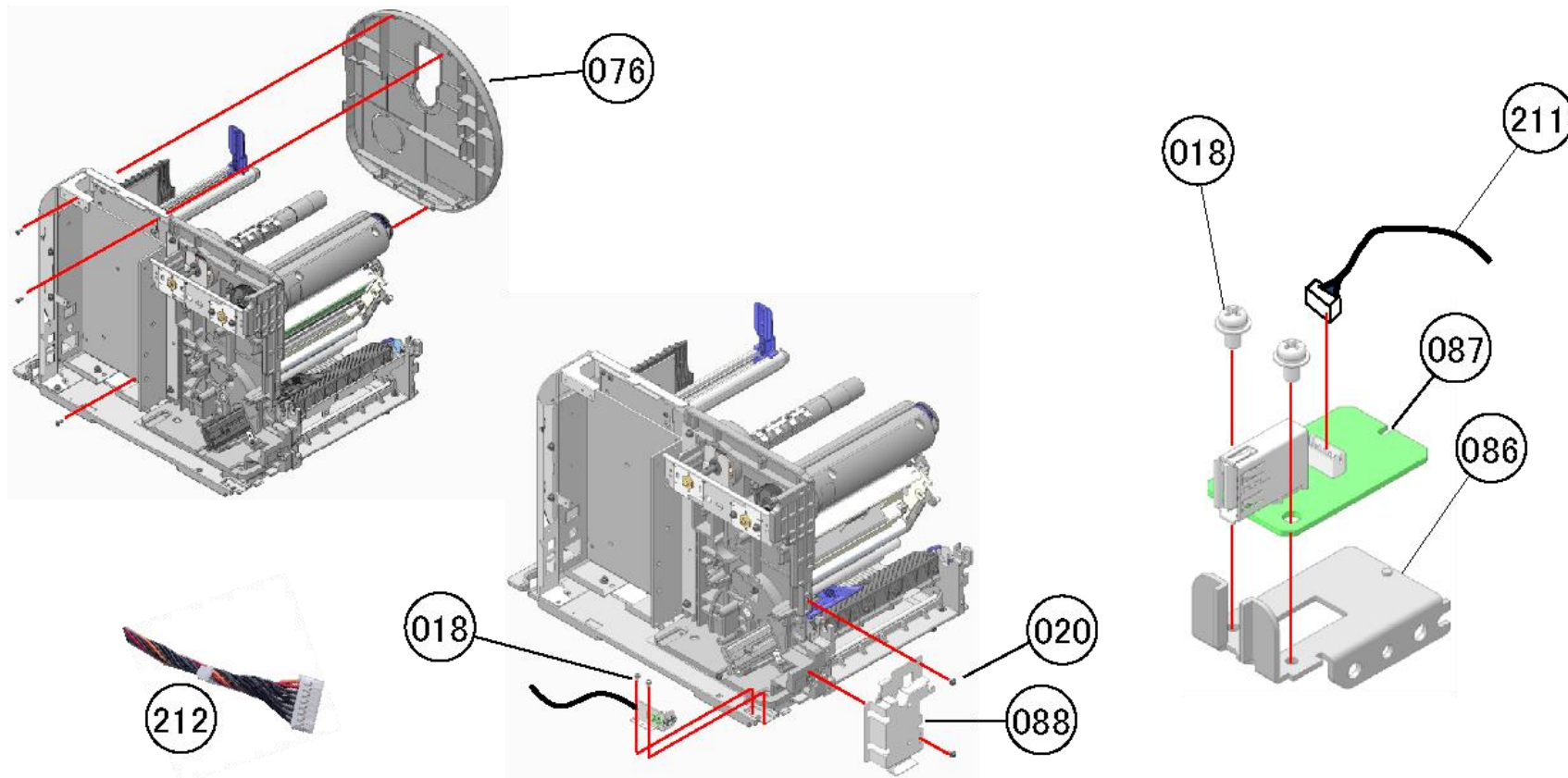
DESCRIPTION
Fig08-ASSY



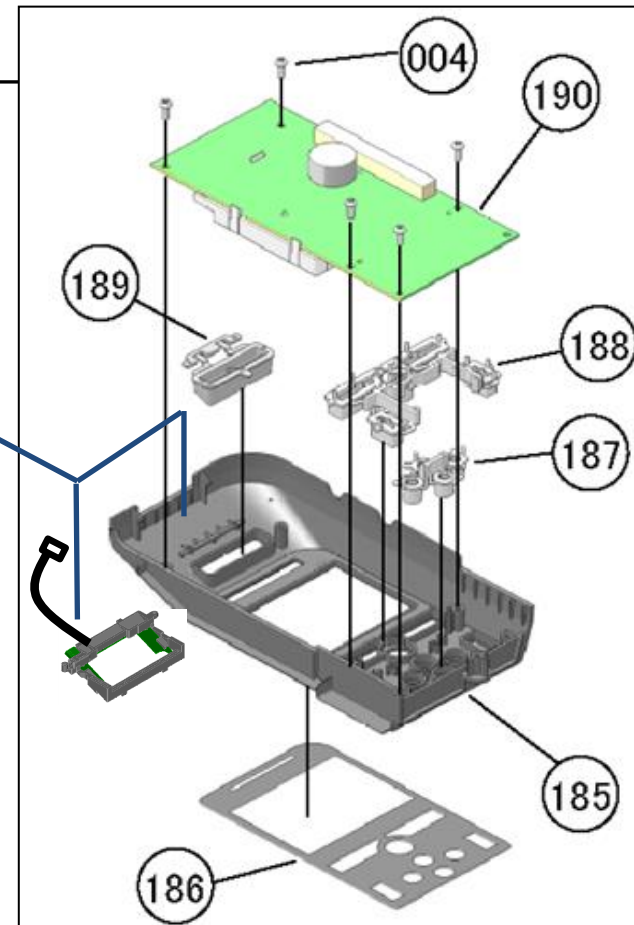
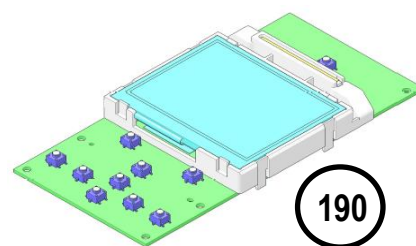
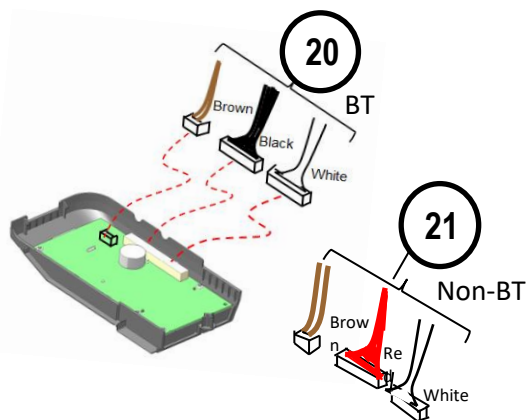
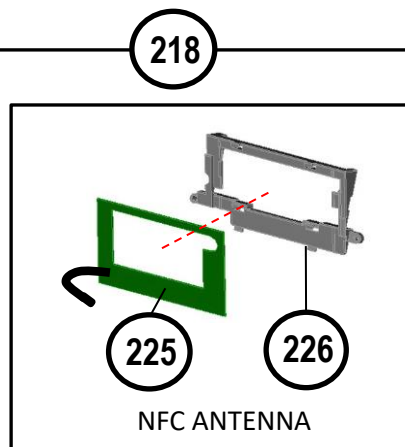
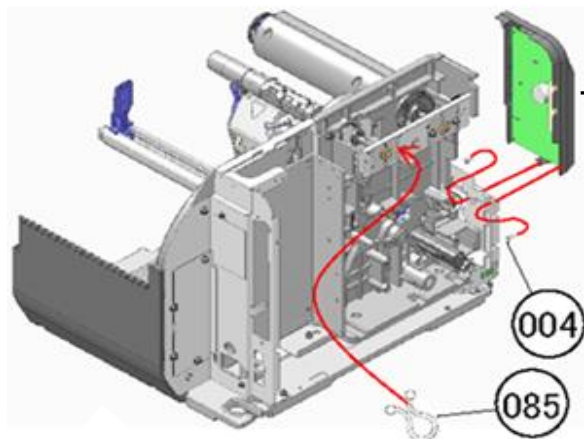


DESCRIPTION
Fig10-ASSY

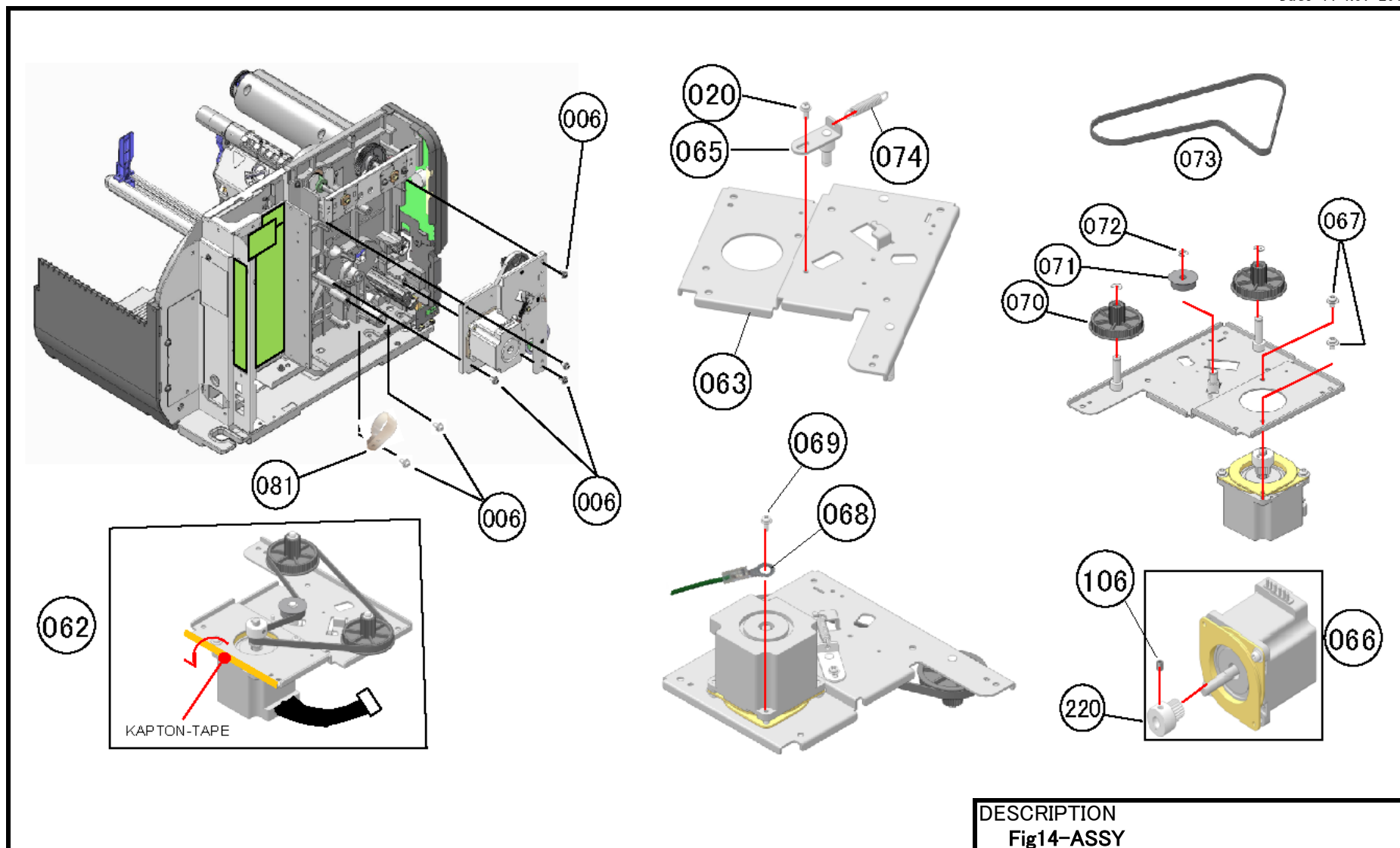


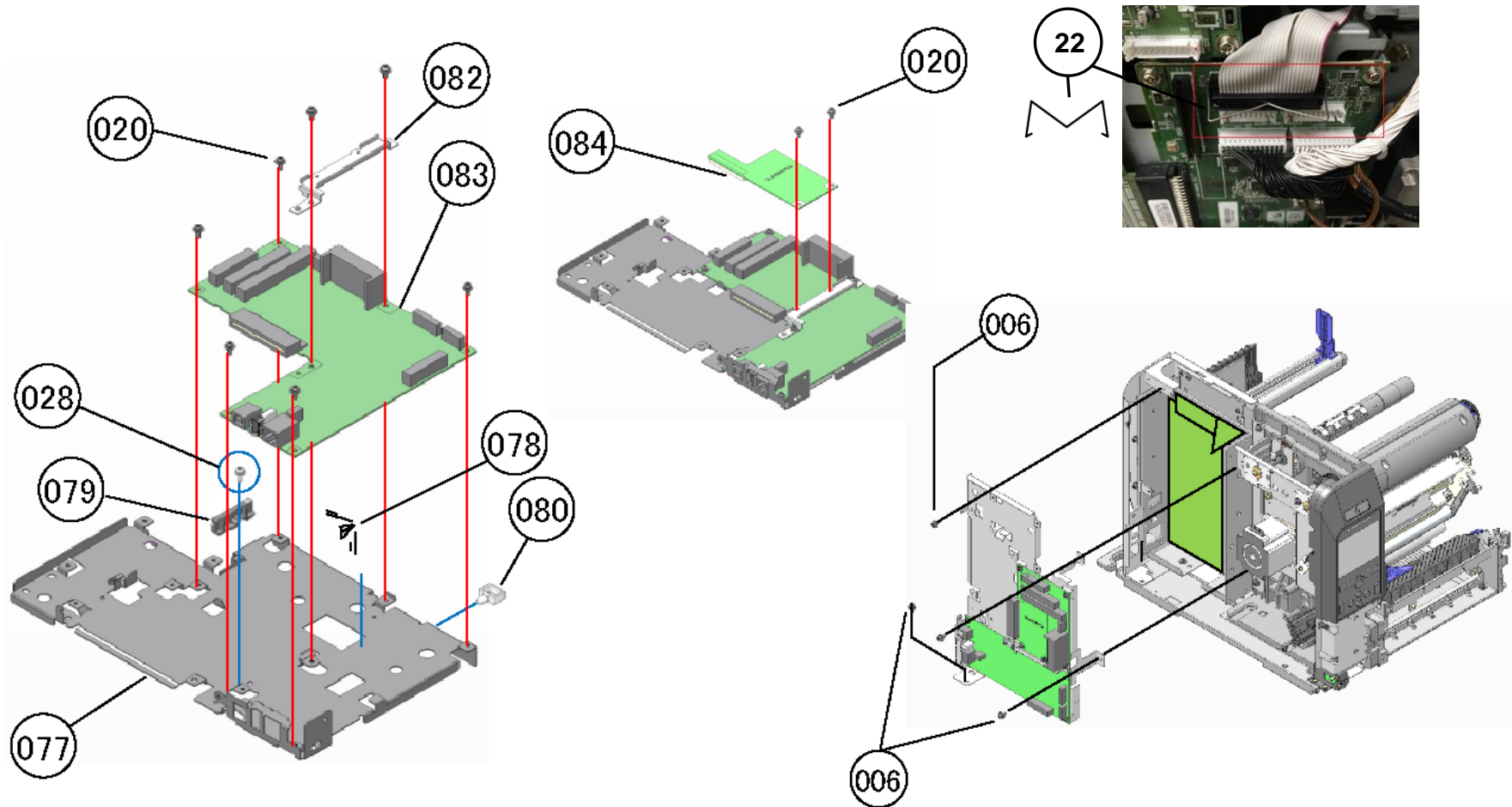


DESCRIPTION
Fig12-ASSY

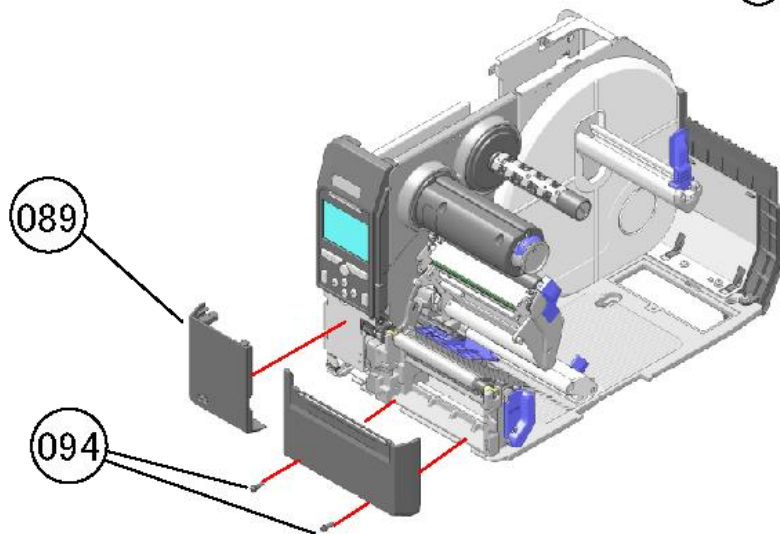
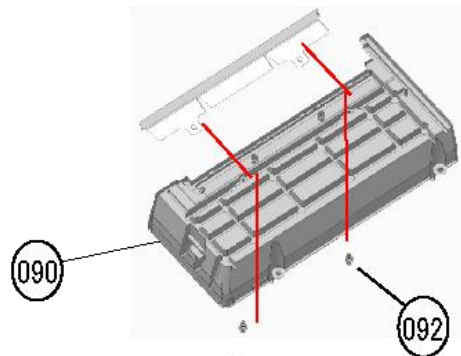
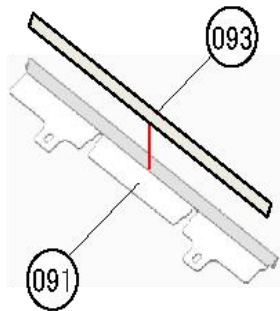


DESCRIPTION
Fig13-ASSY

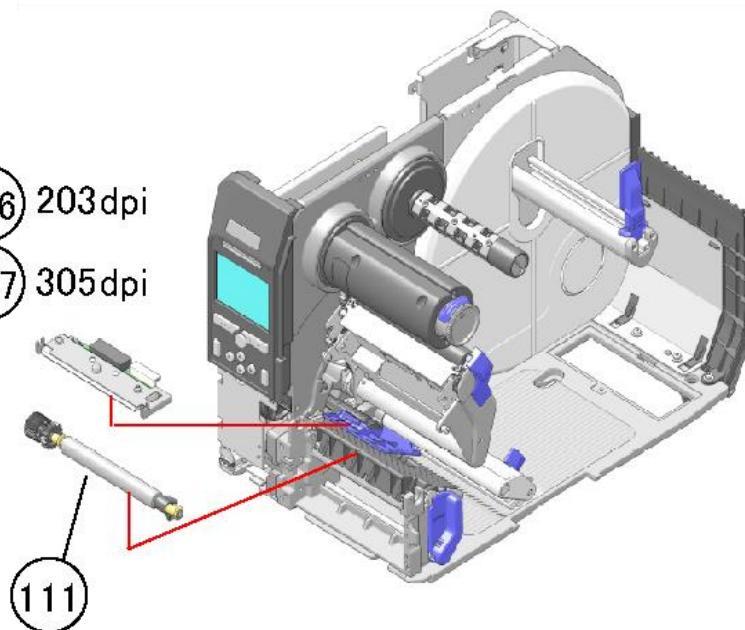




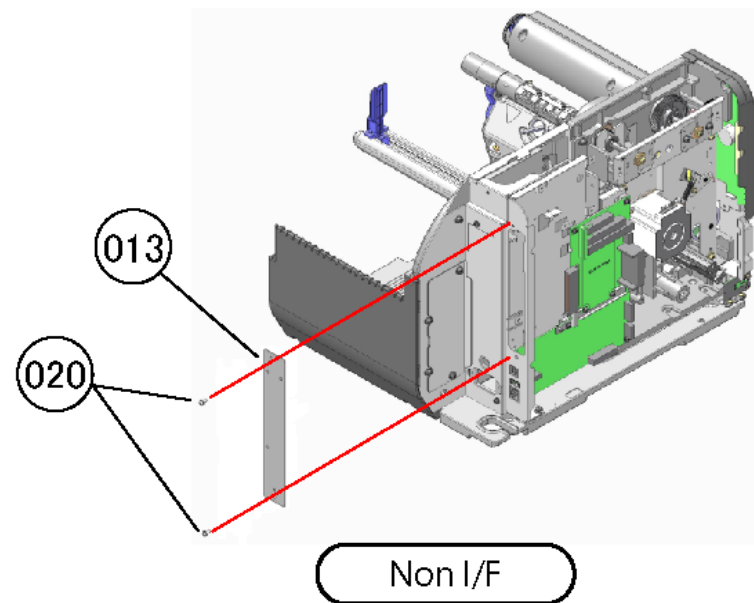
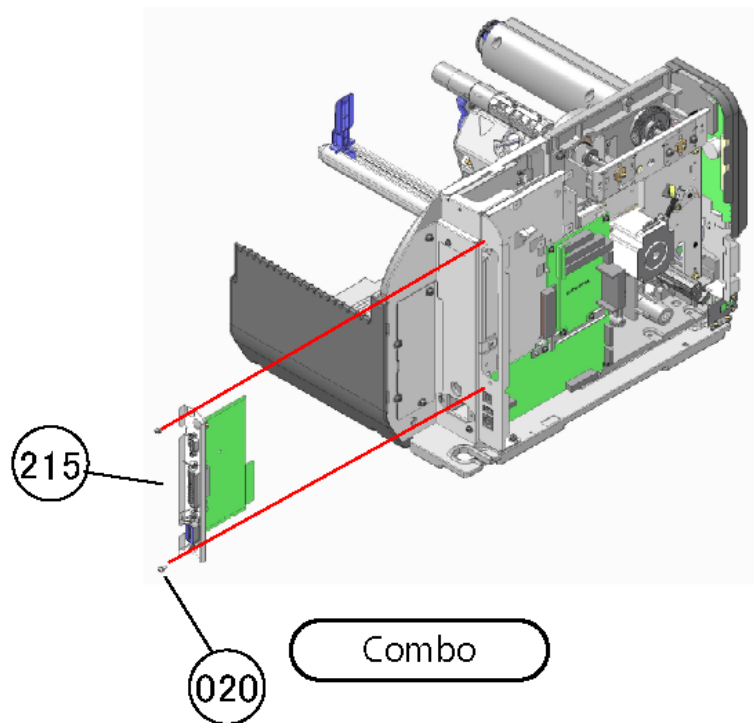
DESCRIPTION
Fig15-ASSY



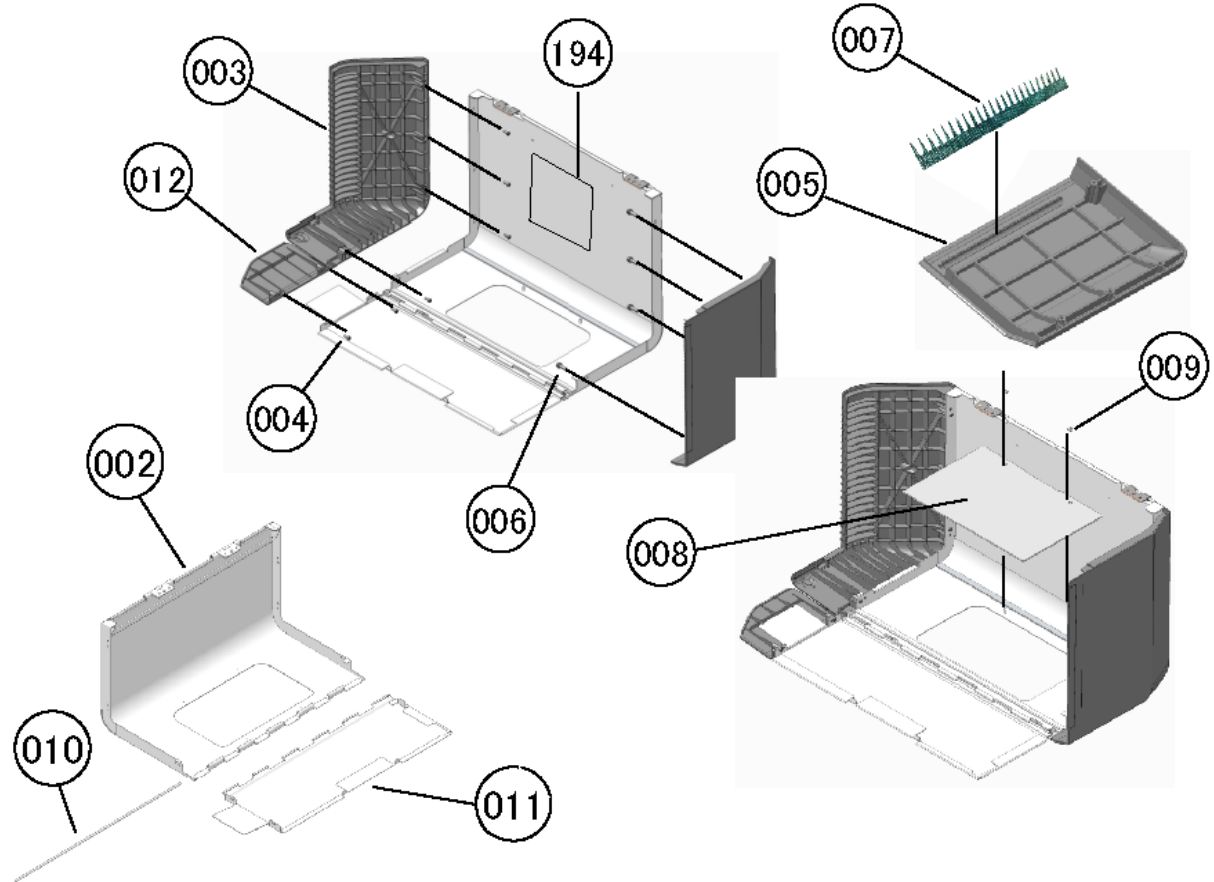
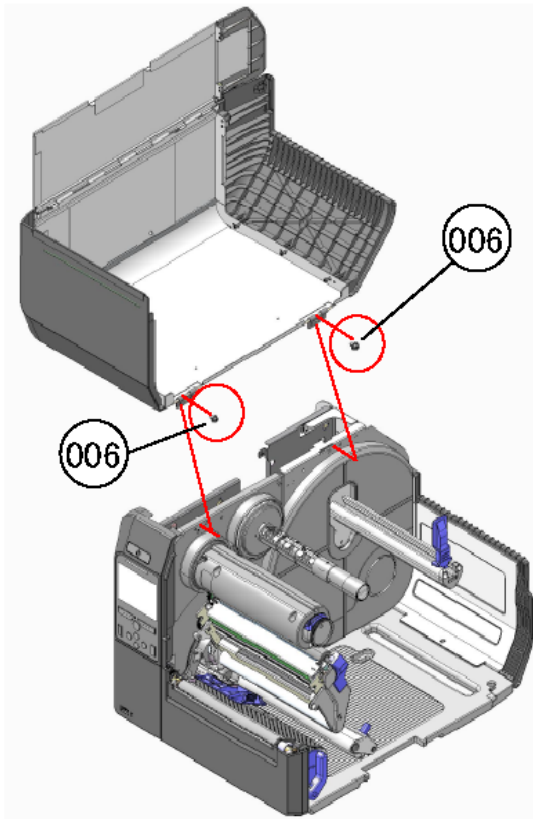
- 116 203dpi
- 117 305dpi



DESCRIPTION
Fig16-ASSY

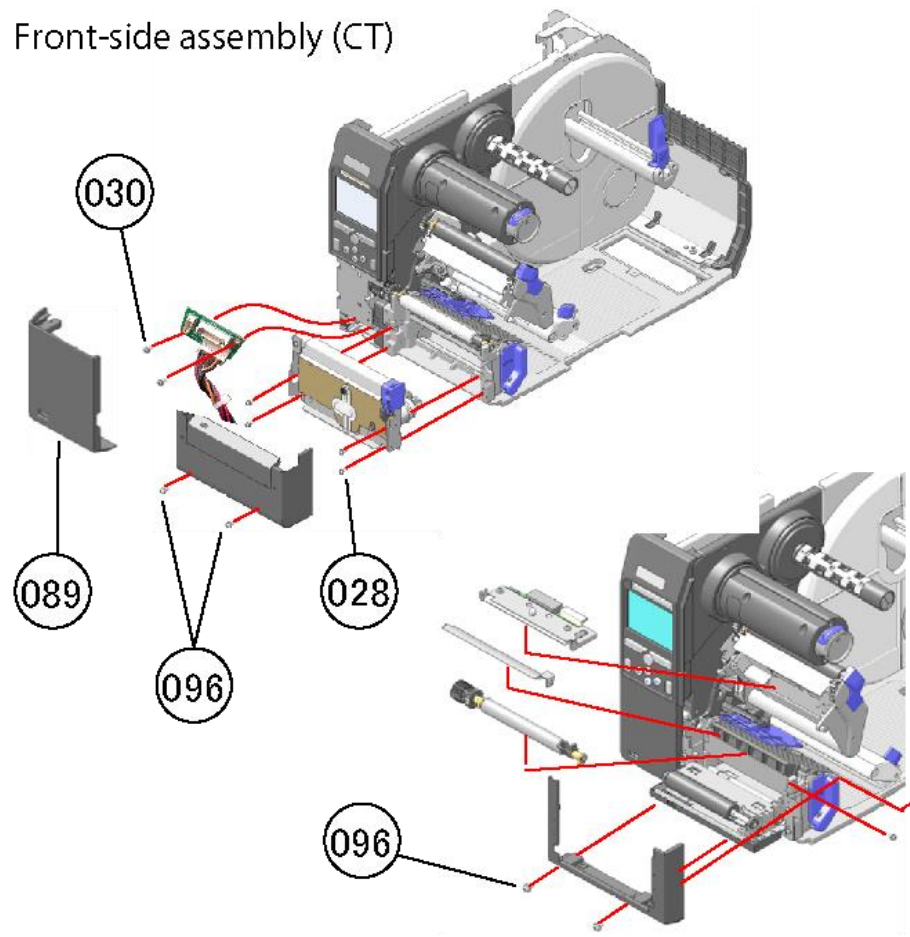


DESCRIPTION
Fig17-ASSY

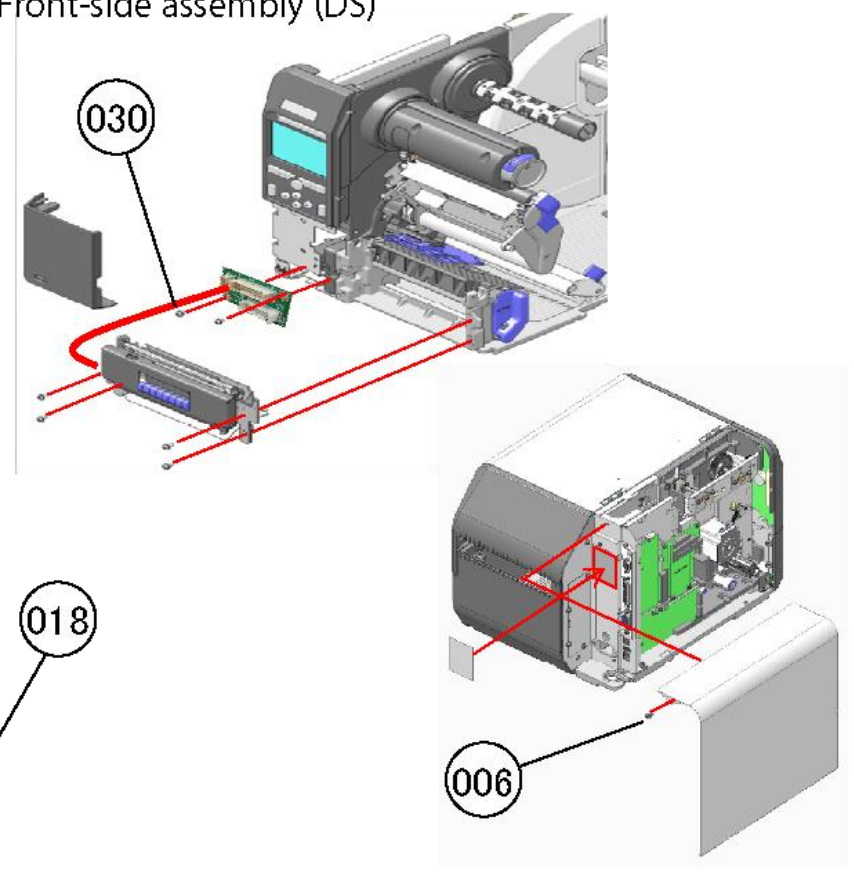


DESCRIPTION
Fig18-ASSY

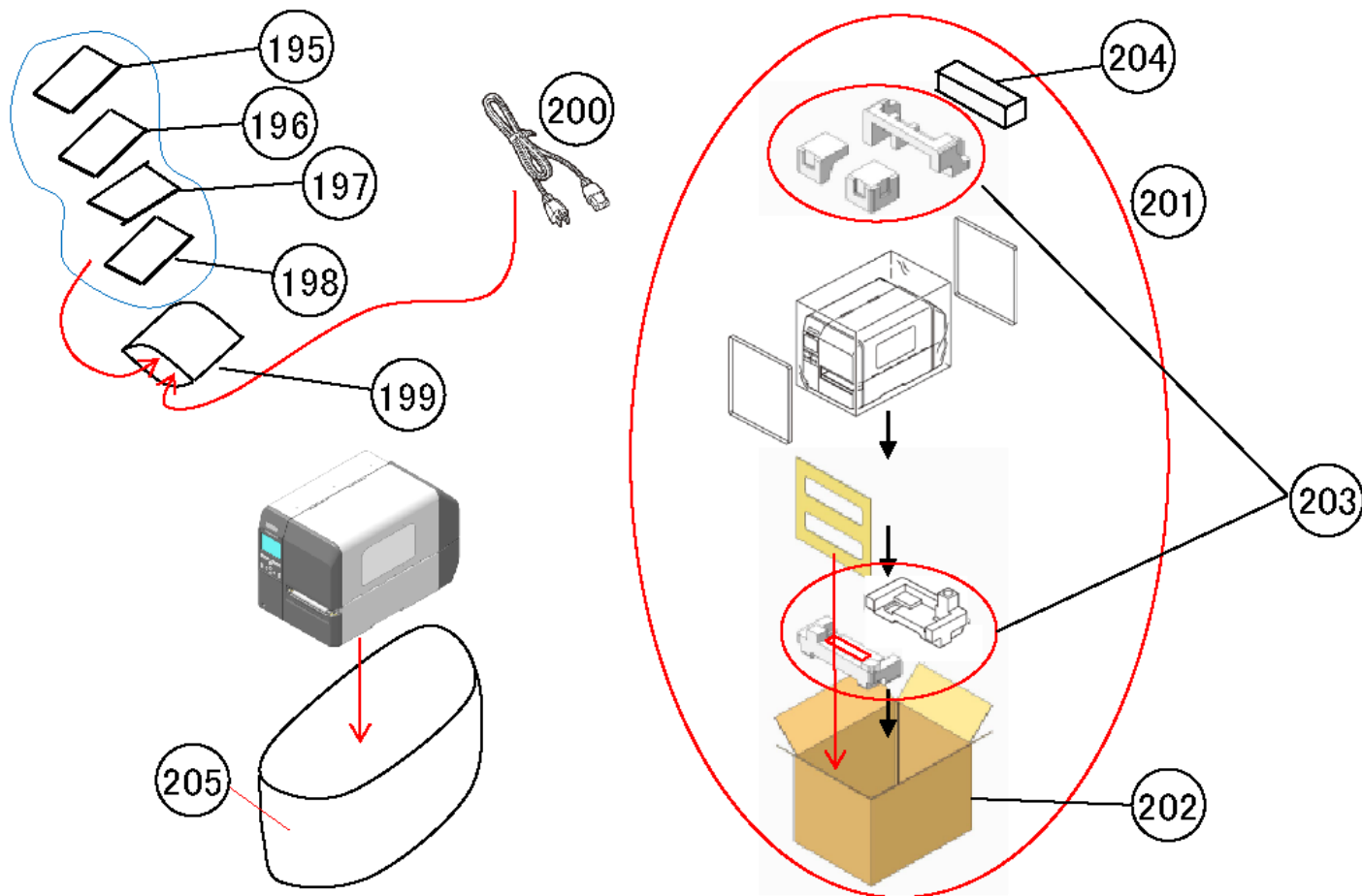
Front-side assembly (CT)



Front-side assembly (DS)



DESCRIPTION
Fig19-ASSY



DESCRIPTION
Fig20-ASSY

CL6NX SERVICE PARTS LIST

| No | First_Code | Parts_No (REV.NO) | Description | NOTE | |
|----|------------|----------------------|--------------------------|--------------------------------|--|
| 2 | R32163402 | R32163402 | OPEN COVER TOP SET | Fig18 | |
| 3 | P56208301 | P56208301 | REAR OPEN COVER | Fig18 | |
| 4 | M16208000 | MH2300822 | BIND HEAD P TIGHT SCREW | Fig4,8,13,18 | |
| 5 | P56176601 | P56176601 | FRONT COVER TOP | Fig18 | |
| 6 | M16259000 | MD4401022 | PAN HEAD SCREW+SW+WL | Fig2,4,6,7,9,10,11,14,15,18,19 | |
| 7 | P56231500 | P56231500 | SHEET(THUNDER)W176 | Fig18 | |
| 8 | P53097000 | P53097001 | WINDOW | Fig18 | |
| 9 | MV8300030 | MV8300030 | PUSH NUT | Fig18 | |
| 10 | P53599000 | P53599000 | HINGE PIN(SUB COVER) | Fig18 | |
| 11 | P53103000 | P53103004 | SUB OPEN COVER | Fig18 | |
| 12 | P53111000 | P53111000 | SUB REAR OPEN COVER | Fig18 | |
| 13 | P54785000 | P54785001 | IF COVER (STD) | Fig17 | |
| 18 | MD4300622 | MD4300622 | PAN HEAD SCREW+SW+WL | Fig1,5,12,19 | |
| 20 | MD4300822 | MD4300822 | PAN HEAD SCREW+SW+WL | Fig1,3,5,6,7,12,14,15,17 | |
| 21 | P56208401 | P56208401 | DIS BLIND COVER(RW) | Fig9 | |
| 22 | R27582000 | R27582001 | COVER LH SET | Fig9 | |
| 23 | P56176802 | P56176802 | BASE FRAME | Fig9 | |
| 24 | P11522000 | PT6750101 | CASE LEG | Fig9 | |
| 25 | P53598000 | P53598000 | PIN(COVER LH) | Fig2,9 | |
| 26 | P52952000 | P52952004 | CENTER FRAME | Fig2 | |
| 27 | P53139000 | P53139000 | SENSOR CASE TENSION | Fig2 | |
| 28 | MD3300822 | MD3300822 | PAN HEAD SCREW+SW+WS | Fig2,11,15,19 | |
| 29 | R28363000 | R28363000 | CL4NX HO RB PCB SET -LF | Fig8 | |
| 30 | MD3300621 | MD3300622 | PAN HEAD SCREW+SW+WS | Fig8,10,19 | |
| 31 | P52970000 | P52970002 | DAMPER BASE | Fig7 | |
| 32 | P53638000 | P53638000 | SHAFT(DAMPER BASE) | Fig7 | |
| 33 | PA0730300 | PA0730320 | WASHER (4.2*14*1) | Fig7 | |
| 34 | P56208500 | P56208500 | SHAFT(DAMPER A) | Fig7 | |
| 35 | ND0060030 | ND0060030 | E SNAP RING | Fig2,7 | |
| 36 | P56208600 | P56208600 | SHAFT(DAMPER B) | Fig7 | |
| 37 | ND0030030 | ND0030030 | E SNAP RING | Fig7 | |
| 38 | P56208700 | P56208700 | LABEL GUIDE LH(DAMPER) | Fig7 | |
| 39 | MA1300622 | MA1300622 | FLAT HEAD SCREW | Fig7 | |
| 40 | P56208800 | P56208800 | DAMPER HOLDER TOP | Fig7 | |
| 41 | P53121000 | P53121004 | LABEL GUIDE LEVER | Fig7 | |
| 42 | P53127000 | P53127000 | LABEL GUIDE RH | Fig7 | |
| 43 | P53123000 | P53123001 | LABEL GUIDE STOPPER | Fig7 | |
| 44 | MH0301021 | MH0301022 | PAN HEAD P TIGHT SCREW | Fig7 | |
| 45 | P56208901 | P56208901 | SPRING(DAMPER B RH) | Fig7 | |
| 46 | P56209000 | P56209000 | DAMPER HOLDER UNDER | Fig7 | |
| 47 | P56209101 | P56209101 | SPRING(DAMPER B LH) | Fig7 | |
| 48 | P56209201 | P56209201 | SPRING(DAMPER A) | Fig7 | |
| 49 | P56209300 | P56209300 | SPRING(DAMPER BASE) | Fig7 | |
| 50 | PA0720100 | PA0720110 | COLLAR(5*16*2.3) | Fig5,7 | |
| 51 | R32356301 | R32356301 | CENTER PLATE SET | Fig9 | |
| 52 | P56209400 | P56209400 | LABEL HOLDER | Fig10 | |
| 53 | P53125000 | P53125000 | LABEL HOLDER CAP | Fig10 | |
| 54 | MA0400822 | MA0400822 | PAN HEAD SCREW | Fig10 | |
| 55 | R30543003 | R30543003 | LABEL HOLDER SUPPORT SET | Fig10 | |
| 56 | P53122000 | P53122001 | LABEL HOLDER GUIDE RH | Fig10 | |
| 57 | P56483100 | P56483100 | LABEL HOLDER GUIDE RH SP | Fig10 | |
| 58 | NA1003022 | NA1030022 | PLAIN WASHER | Fig10 | |
| 59 | MH0300821 | MH0300822 | PAN HEAD P TIGHT SCREW | Fig10 | |
| 60 | R32285303 | R32285303 | REAR PANEL LH(SILK) | Fig9 | |

| | | | | | |
|-----|-----------|-----------|-------------------------------|-------------|--|
| 61 | P56225001 | P56225001 | REAR PANEL RH | Fig9 | |
| 62 | R29788000 | R29788000 | GEAR BRACKET ASSY | Fig14 | |
| 63 | R27637000 | R27637000 | GEAR FRAME SET | Fig14 | |
| 65 | R27442000 | R27442000 | TENSION BR SET | Fig14 | |
| 66 | R29789000 | R29789000 | MOTOR S/A | Fig14 | |
| 67 | MD4400822 | MD4400822 | PAN HEAD SCREW+SW+WL | Fig14 | |
| 68 | R13541000 | R13541000 | FG CABLE-195 SET-LF | Fig14 | |
| 69 | MD0400622 | MD0400622 | PAN HEAD SCREW-LF | Fig14 | |
| 70 | P52963000 | P52963000 | GEAR/PULLEY(0_6*20/67) | Fig14 | |
| 71 | P44208000 | P44208000 | TENSION ROLLER | Fig14 | |
| 72 | ND0040022 | ND0040030 | E SNAP RING | Fig3,4,6,14 | |
| 73 | P53988000 | P53988000 | TIMING BELT | Fig14 | |
| 74 | P53618000 | P53618000 | SPRING(IDOLE) | Fig14 | |
| 75 | K00517900 | K00517900 | POWER UNIT-LF | Fig11 | |
| 76 | P53128000 | P53128002 | LABEL HOLDER GUIDE LH | Fig12 | |
| 77 | P52979000 | P52979002 | MAIN PCB BR | Fig15 | |
| 78 | P55724000 | P55724000 | HEAT CONDUCTION PAD | Fig15 | |
| 79 | P52981000 | P52981000 | I/F GUIDE RAIL | Fig15 | |
| 80 | P54964000 | P54964000 | CABLE SADDLE | Fig15 | |
| 81 | JG100141A | JG100141A | NYLON CLAMP | Fig14 | |
| 82 | P56209703 | P56209703 | MAIN PCB SUB BR | Fig15 | |
| 83 | R32241602 | R32241602 | CLNX-CONT PCB ASSY-LF | Fig15 | |
| 84 | R32262401 | R32262401 | CLNX-FPGA PCB ASSY-LF | Fig15 | |
| 85 | P55073000 | P55073000 | OMEGA LOCK | Fig13 | |
| 86 | P53115000 | P53115000 | USB PCB BR | Fig12 | |
| 87 | R28364000 | R28364000 | CL4NX USB PCB ASSY | Fig12 | |
| 88 | P53114000 | P53114001 | CONT PCB BR | Fig12 | |
| 89 | P53096000 | P53096000 | FRONT COVER UNDER LH | Fig16,19 | |
| 90 | P56176700 | P56176700 | FRONT COVER UNDER RH | Fig16 | |
| 91 | P56217001 | P56217001 | TEAR OFF CUTTER | Fig16 | |
| 92 | MD4300522 | MD4300522 | PAN HEAD SCREW+SW+WL | Fig16 | |
| 93 | P56209800 | P56209800 | SHEET(TEAR OFF) | Fig16 | |
| 94 | MD3401428 | MD3401428 | PAN HEAD SCREW+SW+WS | Fig16 | |
| 95 | P56209901 | P56209901 | REAR COVER | Fig9 | |
| 96 | MD3401028 | MD3401028 | PAN HEAD SCREW+SW+WS | Fig9,19 | |
| 97 | P56176902 | P56176902 | ENGINE FRAME | Fig6 | |
| 98 | P52973000 | P52973000 | LABEL GUIDE LH(F) | Fig6 | |
| 99 | P52954000 | P52954001 | HEAD LOCK PLATE LH | Fig6 | |
| 100 | P56210000 | P56210000 | SHAFT(HOOK) | Fig6 | |
| 101 | P53616000 | P53616000 | SPRING(HOOK) | Fig6 | |
| 102 | P56210100 | P56210100 | MEDIA GUARD | Fig6 | |
| 103 | R30541000 | R30541001 | HEAD LOCK ASSY | Fig6 | |
| 106 | MJ1400524 | MJ1400522 | HEX SOCKET SET SCREW(W-POINT) | Fig6,14 | |
| 107 | R32767800 | R32767801 | SENSOR S/A -LF CL6NX | Fig8 | |
| 108 | R32444500 | R32444500 | LABEL SENSOR ASSY | Fig8 | |
| 109 | P53012000 | P53012000 | SENSOR GUIDE LEVER | Fig8 | |
| 110 | P56226100 | P56226100 | LABEL SENSOR GUIDE | Fig8 | |
| 111 | R32174100 | R32174100 | PLATEN S/A(B) | Fig16 | |
| 112 | R32165404 | R32165405 | HEAD BASE PLATE SET | Fig3 | |
| 113 | P56310900 | P56310900 | SPRING(RELEASE) | Fig3 | |
| 114 | P52999000 | P52999001 | HEAD_AJ_KNOB | Fig3 | |
| 115 | P56211100 | P56211100 | SHAFT(HEAD AJ) | Fig3 | |
| 116 | R32169600 | R32169600 | HEAD SUB ASSY(8) | Fig16 | |
| 117 | R32169900 | R32169900 | HEAD SUB ASSY(12) | Fig16 | |
| 118 | P56177002 | P56177002 | HEAD FRAME | Fig3 | |
| 119 | P52982000 | P52982000 | HEAD PRESSURE KNOB | Fig3 | |
| 120 | P56240700 | P56240700 | SPRING(HEAD) | Fig3 | |
| 121 | P56217800 | P56217800 | HEAD PRESSURE ARM | Fig3 | |

| | | | | | |
|-----|-----------|-----------|-------------------------|-------|--|
| 122 | P56212400 | P56212400 | SHAFT(ARM) | Fig3 | |
| 123 | P56212500 | P56212500 | HEAD PRESSURE | Fig3 | |
| 124 | P53626000 | P53626000 | SPRING(HEAD AJ) | Fig3 | |
| 125 | P52991000 | P52991000 | AJ PLATE(HEAD) | Fig3 | |
| 126 | P56212600 | P56212600 | SHAFT(HEAD BASE) | Fig4 | |
| 127 | K00533900 | K00533900 | FINGER | Fig3 | |
| 128 | R27444000 | R27444004 | HEAD FRAME LH SET | Fig4 | |
| 129 | P52989000 | P52989000 | GEAR H(1_25*16) | Fig4 | |
| 130 | P53627000 | P53627000 | HEAD AJ SCREW | Fig3 | |
| 131 | P53625000 | P53625000 | HEAD LOCK SCREW | Fig5 | |
| 132 | P41929000 | P41929000 | COLLAR(5*6*4.8) | Fig5 | |
| 133 | P56212702 | P56212702 | HEAD HARNESS COVER | Fig4 | |
| 134 | P52987000 | P52987001 | SENSOR HOLD SP | Fig4 | |
| 135 | MD4301022 | MD4301022 | PAN HEAD SCREW+SW+WL | Fig4 | |
| 136 | P52966000 | P52966000 | HEAD FRAME RH | Fig5 | |
| 137 | P52988000 | P52988000 | AJ PLATE(RIBBON ROLLER) | Fig5 | |
| 138 | P56212800 | P56212800 | SHAFT(HEAD) | Fig4 | |
| 139 | MD3401021 | MD3401022 | PAN HEAD SCREW+SW+WS | Fig4 | |
| 140 | R32170100 | R32170100 | RIBBON ROLLER S/A | Fig5 | |
| 141 | P56412201 | P56412201 | SHEET(RIBBON ROLLER) | Fig3 | |
| 142 | P52984000 | P52984000 | HEAD CLOSE LEVER | Fig5 | |
| 143 | P56213001 | P56213001 | AJ PLATE(RIBBON) | Fig5 | |
| 144 | P56349001 | P56349001 | HEAD CLOSE LEVER LH | Fig4 | |
| 145 | P56213100 | P56213100 | SPRING(HEAD UP) | Fig5 | |
| 146 | NB0050022 | NB0050022 | SPRING WASHER | Fig5 | |
| 147 | MN1501030 | MN1501030 | HEX BOLT | Fig5 | |
| 148 | QC6524200 | QC6524200 | STICKER(CAUTION HOT) | Fig3 | |
| 149 | Q04255000 | Q04255000 | STICKER(CAUTION) | Fig3 | |
| 150 | K00041000 | K00396000 | FERRITE CORE-LF | Fig11 | |
| 152 | R32170300 | R32170300 | RIBBON REWIND S/A | Fig2 | |
| 153 | P56213201 | P56213201 | SHAFT(RIBBON CORE) | Fig1 | |
| 154 | P56213302 | P56213302 | RIBBON CORE-IN | Fig1 | |
| 155 | R32170500 | R32170500 | RIBBON CORE (A) S/A | Fig1 | |
| 156 | P40495000 | P40495000 | SHAFT(SLIDE) | Fig1 | |
| 157 | P40494000 | P40494000 | SPRING(SLIDE) | Fig1 | |
| 158 | R29805000 | R29805000 | RELEASE BUTTON S/A | Fig1 | |
| 159 | P53002000 | P53002002 | RELEASE BUTTON COVER | Fig1 | |
| 160 | P53001000 | P53001003 | RELEASE BUTTON | Fig1 | |
| 161 | P53644000 | P53644000 | RIBBON RELEASE SPRING | Fig1 | |
| 162 | PT1112080 | PT1112080 | BALL SUPPORTER | Fig2 | |
| 163 | P11461000 | P11461000 | ONEWAY CLUTCH | Fig2 | |
| 164 | P56354100 | P56354100 | TORQUE LIMITTER | Fig2 | |
| 165 | P52962000 | P52962001 | GEAR C(0_6*81) | Fig2 | |
| 166 | P56344800 | P56344800 | ONE-WAY LIMITTER | Fig2 | |
| 167 | P32582000 | P32582000 | BUSH | Fig2 | |
| 168 | R32170800 | R32170800 | RIBBON UNWIND S/A | Fig2 | |
| 169 | P56213601 | P56213601 | SHAFT(RIBBON BOSS) | Fig1 | |
| 170 | ND0080030 | ND0080030 | E-SNAP RING | Fig1 | |
| 171 | P53006000 | P53006000 | RIBBON BOSS | Fig1 | |
| 172 | P00626000 | P00626010 | SPRING(RIBBON BOSS) | Fig1 | |
| 173 | MH0300522 | MH0300522 | PAN HEAD P TIGHT SCREW | Fig1 | |
| 174 | P53005000 | P53005000 | DISK PLATE | Fig1 | |
| 175 | MA0300621 | MA0300622 | PAN HEAD SCREW | Fig1 | |
| 176 | NB0060022 | NB0060022 | SPRING WASHER | Fig1 | |
| 177 | P56226001 | P56226001 | RIBBON BOSS CAP | Fig1 | |
| 178 | P53642000 | P53642000 | RIBBON BOSS SCREW | Fig1 | |
| 179 | P11280010 | P11280010 | BF STOPPER | Fig2 | |
| 180 | P56412101 | P56412101 | BF SPRING | Fig2 | |

| | | | | | |
|-----|-----------|-----------|--------------------------------|---------|--|
| 181 | P12267000 | P12267000 | TORQUE LIMITER | Fig2 | |
| 182 | MA0200821 | MA0200822 | PAN HEAD SCREW | Fig2 | |
| 183 | P56225402 | P56225402 | RIBBON FRAME | Fig2 | |
| 184 | P56217900 | P56217900 | AJ PLATE(RIBBON SH) | Fig2 | |
| 185 | R32285403 | R32285403 | CONT FRAME CL6NX (SILK) | Fig13 | |
| 186 | P53118000 | P53118000 | CONT FRAME SHEET | Fig13 | |
| 187 | R29808000 | R29808000 | CONT KEY UNDER(SILK) | Fig13 | |
| 188 | R29019000 | R29019000 | CONT KEY TOP(SILK) | Fig13 | |
| 189 | P53112000 | P53112001 | POWER KEY | Fig13 | |
| 190 | R32707300 | R32707301 | CLNX KB PCB ASSY | Fig13 | |
| 194 | Q04253000 | Q04253000 | ROUTE STICKER | Fig18 | |
| 195 | Q04628500 | Q04628500 | Quick Guide | Fig20 | |
| 196 | Q04537300 | Q04537300 | GWP-LEAFLET | Fig20 | |
| 197 | Q04628600 | Q04628600 | Quick Guide(Chinese) | Fig20 | |
| 198 | Q04281000 | Q04281000 | Safety Precautions | Fig20 | |
| 199 | QB2042336 | QB2042336 | POLY BAG | Fig20 | |
| 200 | H00878000 | H00878001 | POWER CORD(EX1) -LF | Fig20 | |
| 201 | R32443601 | R32443601 | PACKING SET (CL6NX) | Fig20 | |
| 202 | Q04628701 | Q04628701 | CARTON CASE (PRINT) | Fig20 | |
| 203 | R32443700 | R32443700 | CUSHION SET (CL6NX) | Fig20 | |
| 204 | Q04629400 | Q04629400 | CARTON SPACER | Fig20 | |
| 205 | Q02031000 | Q02031000 | POLY BAG (6 INCH) | Fig20 | |
| 206 | R32197300 | R32197300 | POWER SUPPLY CABLE SET-L | Fig11 | |
| 207 | R32114800 | R32114800 | HEAD POWER CABLE SET-LF | Fig4,11 | |
| 208 | R28428000 | R28428001 | HEAD SIGNAL CABLE SET-LF | Fig4 | |
| 209 | R32514000 | R32514000 | KB CABLE SET-LF (BT, NFC) | Fig13 | |
| 210 | R33111100 | R33111100 | KB CABLE SET-LF (NON-BT,NF | Fig13 | |
| 211 | R28426000 | R28426000 | USB HOST CABLE SET-LF | Fig12 | |
| 212 | R28425000 | R28425000 | OPTION CABLE SET-LF | Fig12 | |
| 215 | R30542000 | R30542000 | I/F COVER ASSY | Fig17 | |
| 216 | R32163500 | R32163500 | DAMPER ASSY | Fig7 | |
| 217 | R32163800 | R32163800 | ENGINE ASSY | Fig6 | |
| 218 | R32171103 | R32171103 | CONTROL PANEL ASSY CL6NX (NFC) | Fig13 | |
| 220 | P53646000 | P53646000 | MO PULLEY | Fig14 | |
| 221 | P37081000 | P37081000 | GRIP SHEET | Fig1 | |
| 222 | P56213503 | P56213503 | RIBBON CORE-OUT | Fig1 | |
| 223 | F05069900 | F05069900 | PHOTO INTERRUPTER-LF (LAB | Fig10 | |
| 224 | P56500601 | P56500601 | LABEL SENSOR BR | Fig10 | |
| 225 | R32706600 | R32706600 | CLNX-NFC ANT ASSY | Fig13 | |
| 226 | P56579900 | P56579900 | NFC ANTENNA HOLDER | Fig13 | |
| 227 | PC9730100 | PC9730100 | SPRING LOCK | Fig15 | |
| 228 | R32514101 | R32514101 | SENSOR CABLE (J) SET -LF | Fig8 | |

