



Ceaseless Creativity for a Sustainable World

Printing label from Microsoft BizTalk RFID Provider to SATO Printers

User Guide

Version 160127-01

© 2016 SATO Corporation. All rights reserved.

www.satoworldwide.com



TABLE OF CONTENTS

Table of Contents..... 2

Introduction..... 3

Design and export template with NiceLabel Pro 3

Upload Template to Printer via BizTalk RFID Manager 9

Printing RFID Tag from BizTalk RFID Manager11

INTRODUCTION

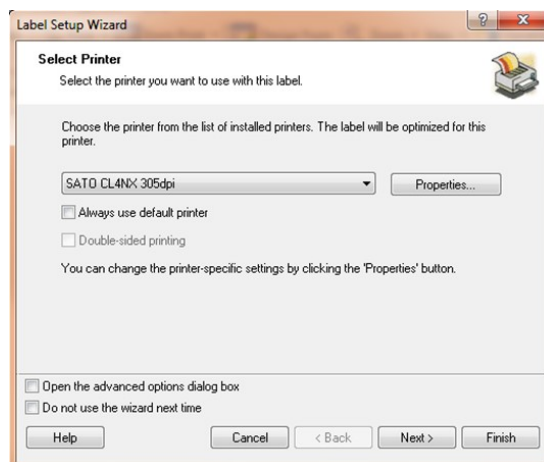
SATO distributes the BizTalk RFID Device Provider for Microsoft BizTalk Server. Users can print out RFID tags from a SATO XML RFID enabled printer using the BizTalk RFID Device Provider. This document is to explain the following steps to test print a RFID Tag from BizTalk RFID Manager.

- Design NiceLabel template and export
- Upload the template to SATO Printer using BizTalk RFID Manager
- Use Microsoft BizTalk RFID Manager to perform test print.

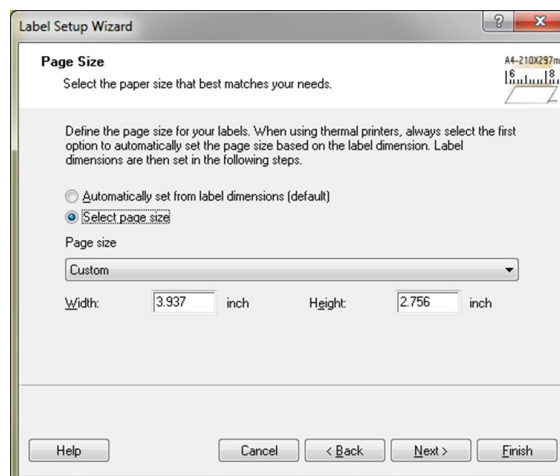
DESIGN AND EXPORT TEMPLATE WITH NICELABEL PRO

CREATE LABEL TEMPLATE USING NICELABEL PRO.

SELECT RFID ENABLED PRINTER DRIVER FROM LABEL SETUP WIZARD.

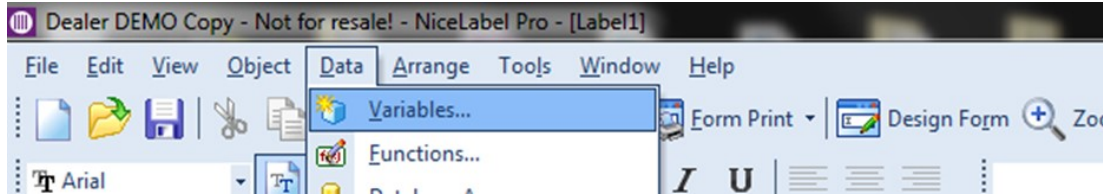


CLICK NEXT AND SETUP THE LABEL SIZE.



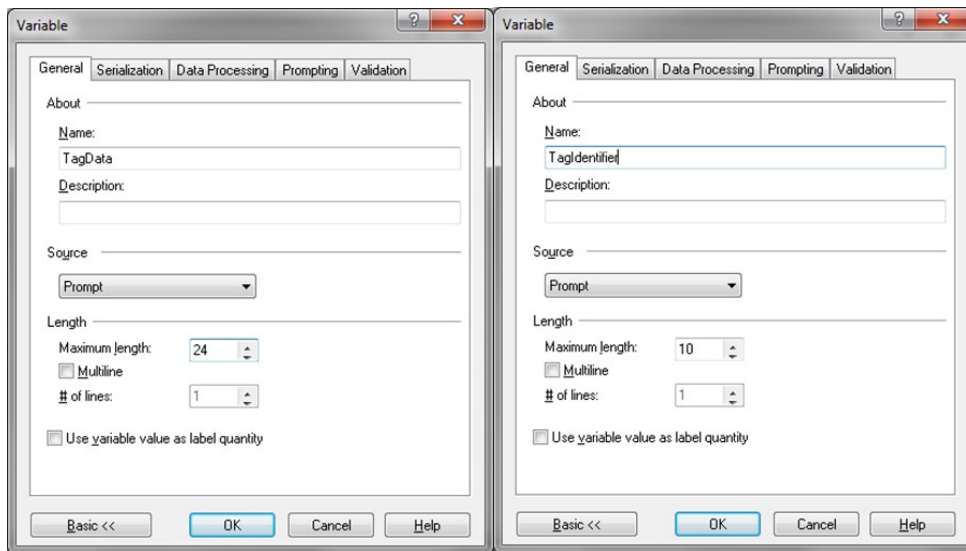
ADD VARIABLES.

Select main Menu -> Data -> Variables to add variables.

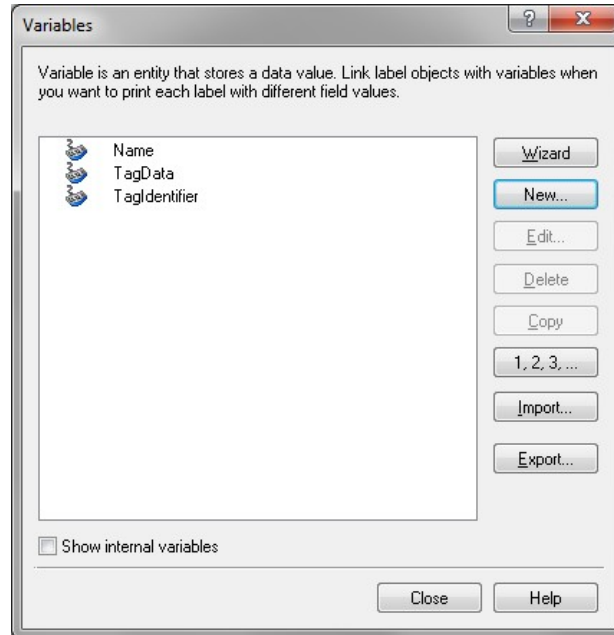


CLICK ON “NEW” BUTTON TO ADD VARIABLE. MAKE SURE TO ADD TAGDATA (LENGTH 24),

TagIdentifier variable with exact name described here. It is important to follow exact name in order to print correctly by BizTalk RFID System.



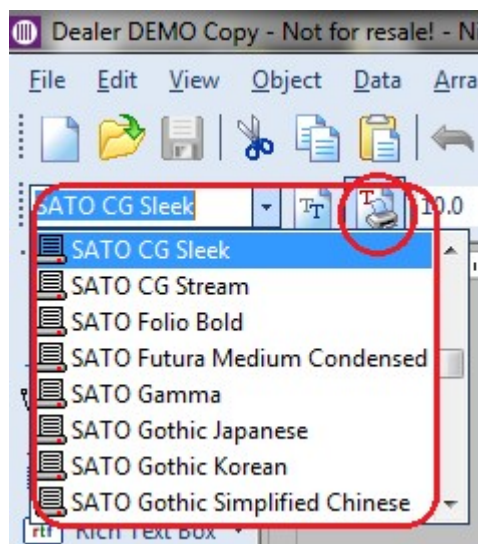
CREATE BELOW VARIABLES AS FOLLOWS



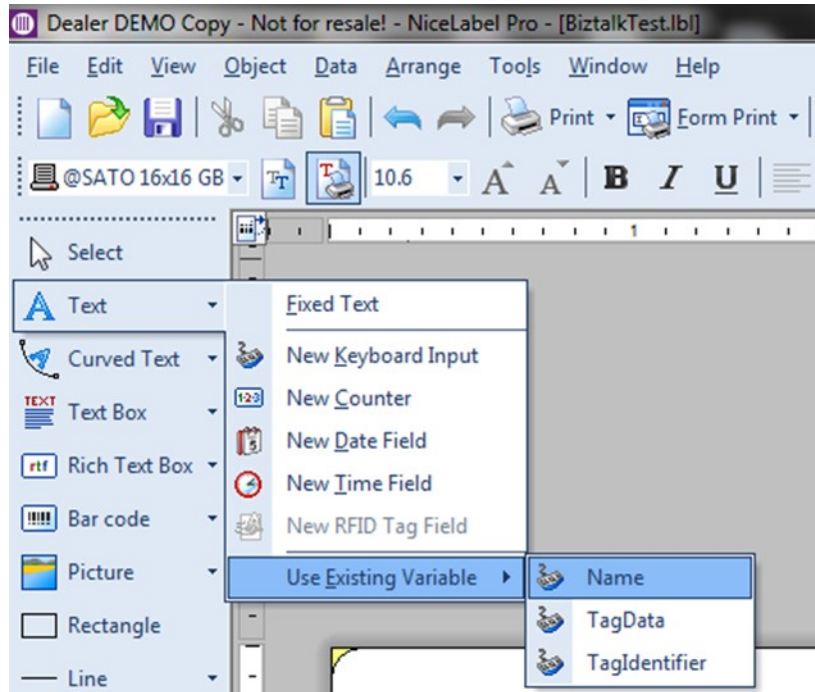
ADD FIELDS TO DESIGN

It is preferable to use SATO printer resident font for all items for the optimize performance. However Static Fields may use any font such as TTF Fonts.

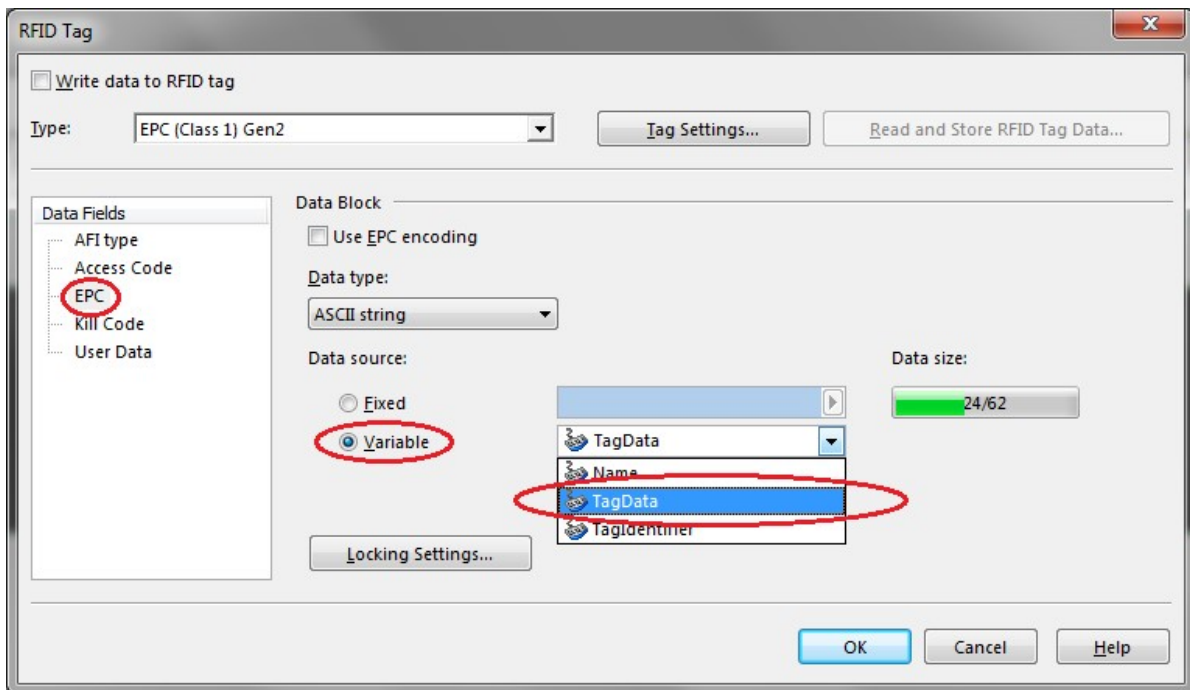
For variables fields, only printer resident font MUST be used.



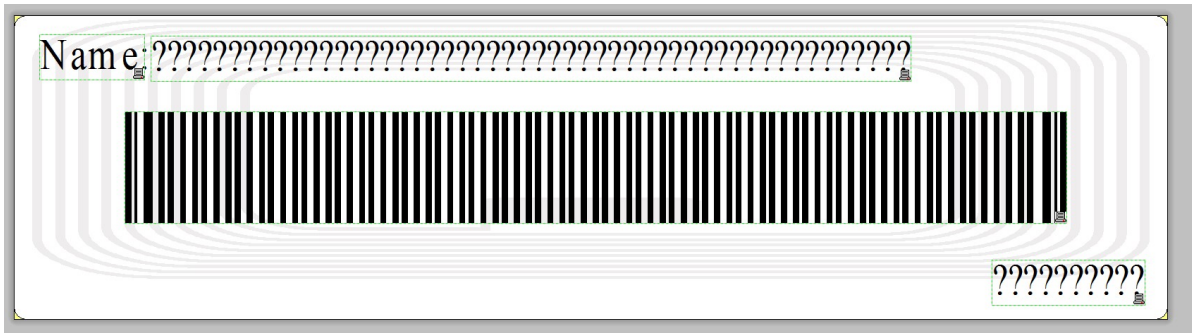
TO ADD VARIABLE TEXT OR BARCODE, CLICK ON DOWN ARROW ICON AT THE RIGHT EDGE OF TOOL AND SELECT "USE EXISTING VARIABLE" AND SELECT DESIRE VARIABLE TO ADD.



FOR RFID TAG, SELECT RFID TAG DATA FROM SUB MENU. SELECT EPC FROM DATA FIELDS LIST AND CHOOSE VARIABLE RADIO BUTTON. CHOOSE TAGDATA FROM THE DROPDOWN LIST BESIDE AND CLICK OK TO CONFIRM.

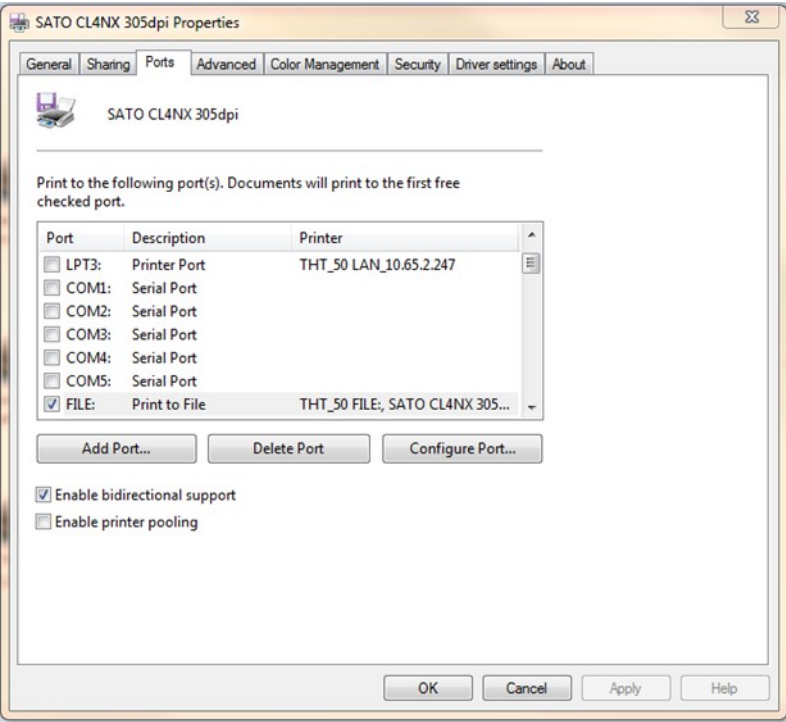


LASTLY ADD TEXT FIELD WITH VARIABLE TAGIDENTIFIER INTO DESIGN AND PLACE ANYWHERE WITHIN THE LABEL. THIS IS REQUIRED BY BIZTALK RFID SYSTEM AND WILL NOT BE PRINTED INTO ACTUAL LABEL. FINAL LABEL SHOULD LOOK SIMILAR TO BELOW SCREENSHOT. SAVE THE LABEL DESIGN BEFORE PROCEED.

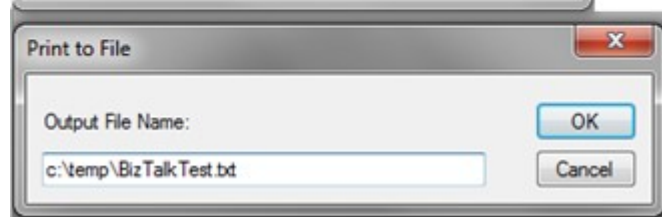
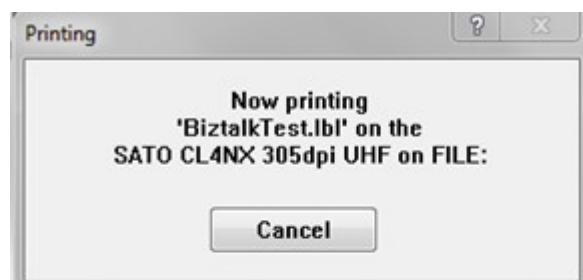
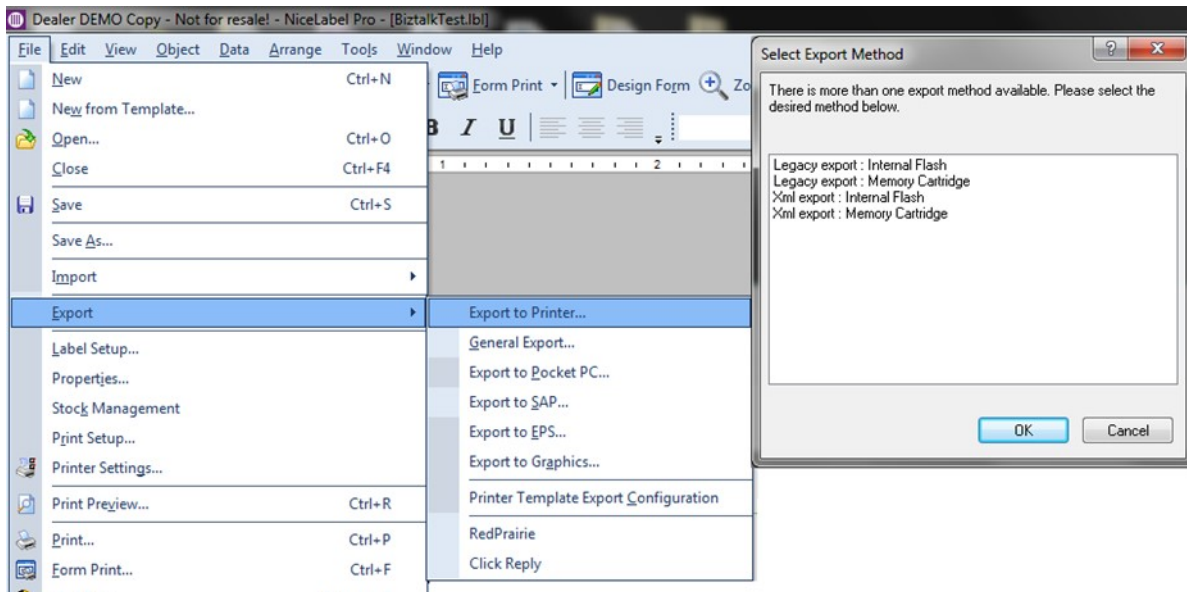


EXPORTING DESIGN AS TEMPLATE

Once the label is designed and saved, export the template into text file and upload to printer through BizTalk RFID Manager. By exporting the template file can be reused easily for multiple printers. In order to export to text file, set the Printer Port to "FILE:" at the printer properties dialog under Control Panel -> Printers & Faxes.



CLICK FILE-> EXPORT->EXPORT TO PRINTER. IN “SELECT EXPORT METHOD” DIALOG, SELECT “XML EXPORT: INTERNAL FLASH” OPTION AND CLICK OK. IT WILL PROMPT A DIALOG FOR OUTPUT FILE NAME; ENTER THE DESIRED TEMPLATE FILE NAME WITH FULL PATH FROM THE ENTRY BOX.



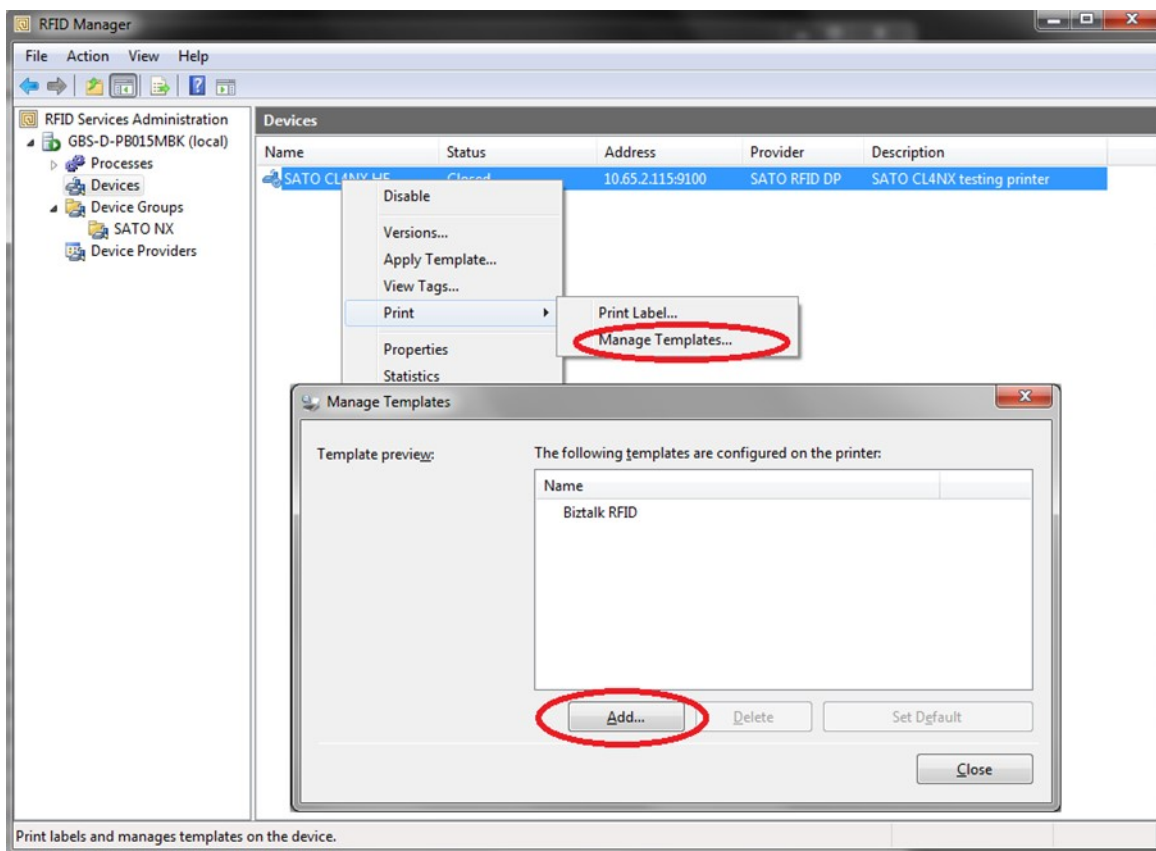
UPLOAD TEMPLATE TO PRINTER VIA BIZTALK RFID MANAGER

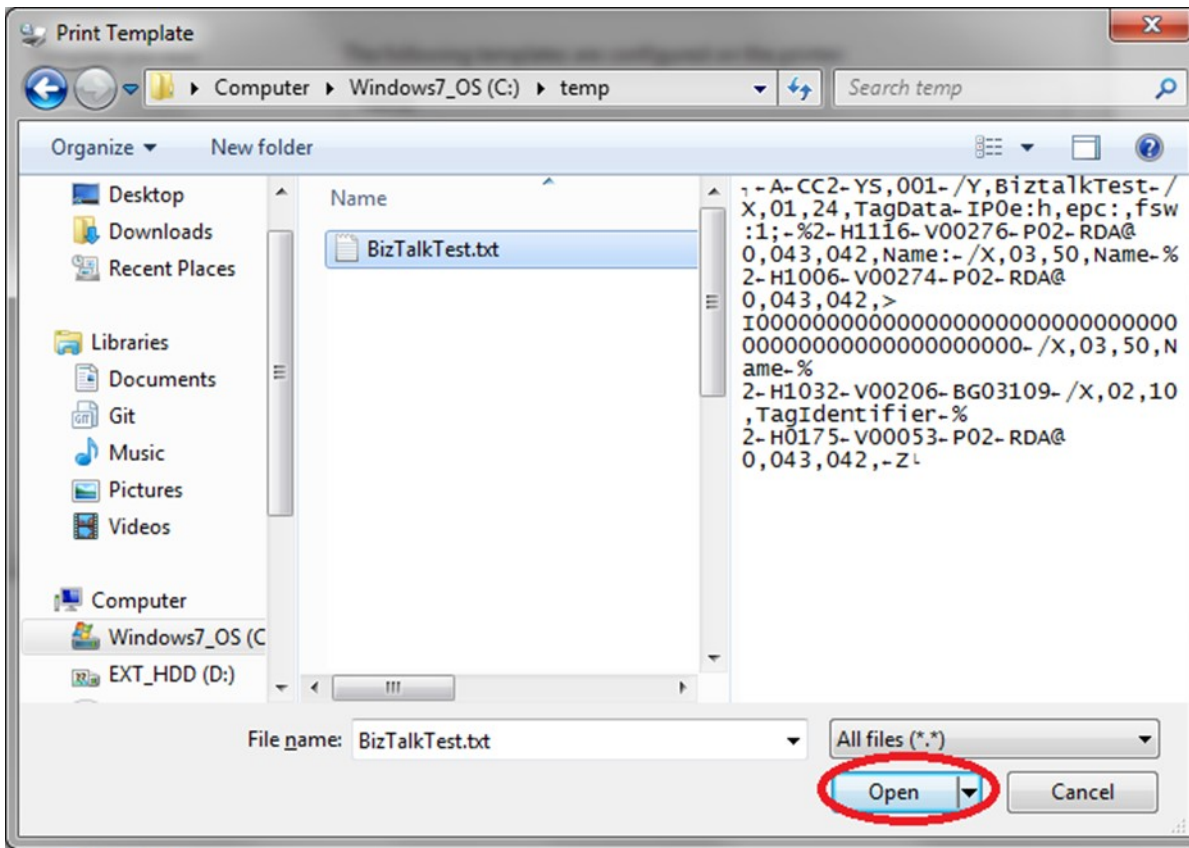
ADD TEMPLATE

Open RFID Manager and go to Devices, select the printer and right click

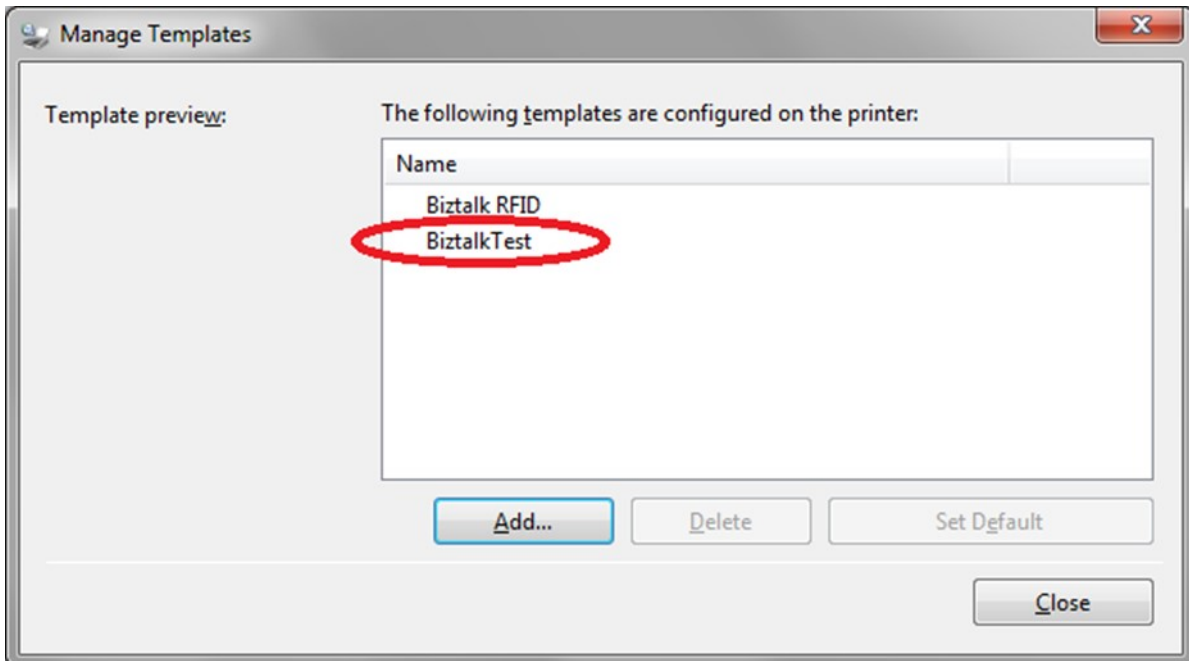
Print ->Manage Templates Menu to view template stored in printer.

Click "Add" button and select template file to upload the new template. If uploading template with same format name, the existing template should be deleted first using "Delete" button.





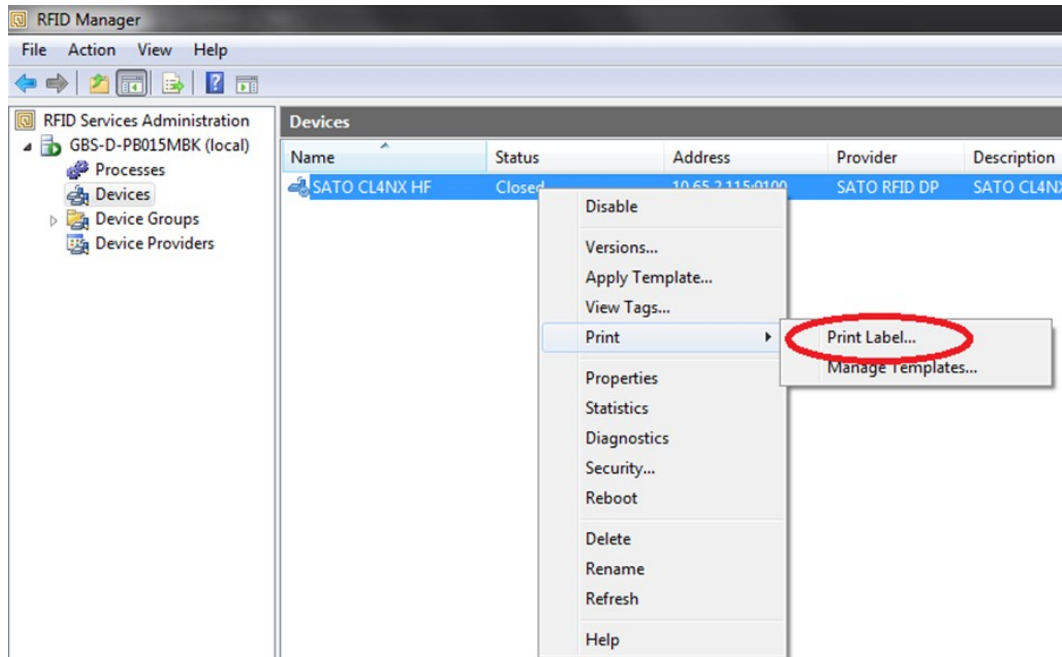
THE LIST WILL BE REFRESHED WITH THE NEWLY UPLOADED TEMPLATE.



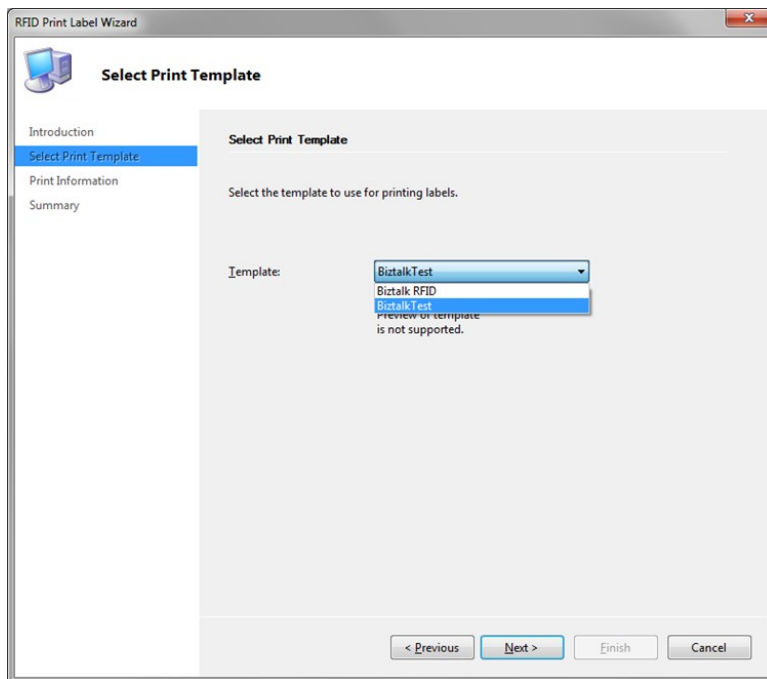
PRINTING RFID TAG FROM BIZTALK RFID MANAGER

PRINT TAG

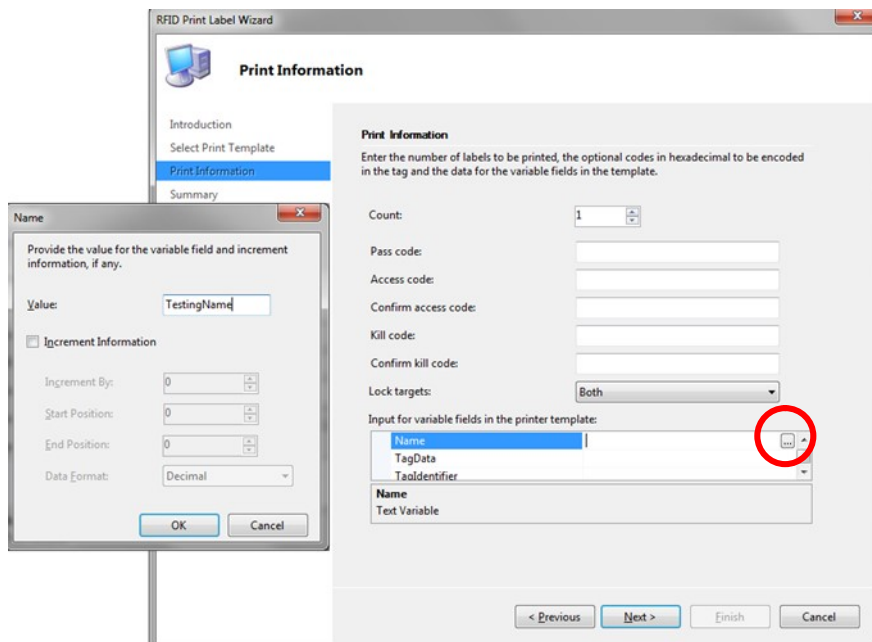
Select Print Label menu from printer context menu.



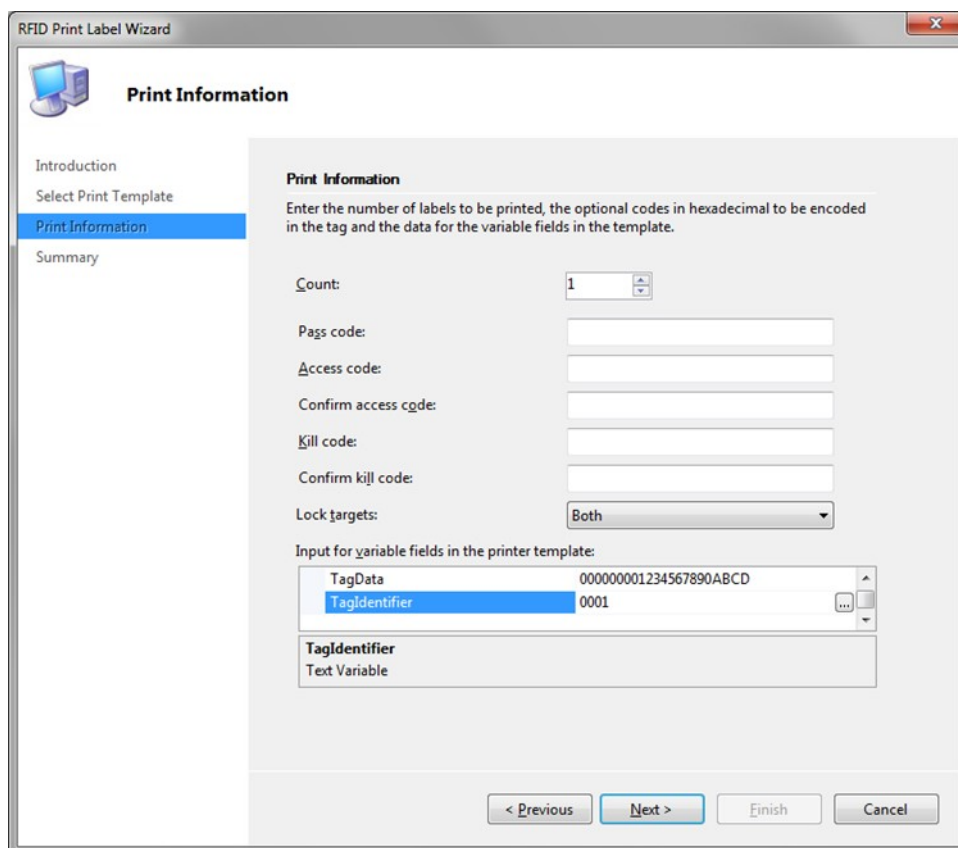
CLICK "NEXT" UNTIL THE "TEMPLATE SELECTION SCREEN". SELECT DESIRED TEMPLATE TO PRINT AND CLICK "NEXT".



FILL IN THE VARIABLES TO PRINT. CLICK “...” BUTTON FOR VARIABLE DATA ENTRY BOX.



MAKE SURE TO INPUT 24 HEX CHAR FOR “TAGDATA” AND MINIMUM 4 HEX CHAR FOR “TAGIDENTIFIER”. “TAGIDENTIFIER” CANNOT BE ODD NUMBER OF CHARACTER (EG: COUNT MUST BE 4,6 8 ETC).



CLICK "NEXT" AND THE SYSTEM WILL SEND THE PRINT DATA TO PRINTER AND WILL DISPLAY THE STATUS. PRINTER WILL PRINT OUT 1 RFID TAG AND THE DIALOGS WILL DISPLAY "SUCCESS" WITH THE "TAG ID" (TAGIDENTIFIER NUMBER).

