

---

# SmaPri Driver Developer Manual

## Driver Settings (Windows)

**SATO CORPORATION**

**Rev.20161003**

---

# Contents

|  |          |
|--|----------|
| <b>Contents</b> .....                                  | <b>1</b> |
| <b>Attention</b> .....                                 | <b>3</b> |
| <b>Chapter4: Driver Settings (Windows)</b> .....       | <b>4</b> |
| 4-1. Install / Uninstall .....                         | 5        |
| - Structure of SmaPri Driver .....                     | 5        |
| - New install.....                                     | 6        |
| - Overwrite install .....                              | 6        |
| - Uninstall.....                                       | 6        |
| 4-2. Administration screen (status) .....              | 7        |
| - How to Start.....                                    | 7        |
| - Function Description.....                            | 7        |
| 4-3. Administration screen (printer settings) .....    | 9        |
| - How to Start.....                                    | 9        |
| - Function Description (Reflect setting change) .....  | 9        |
| - Function Description (Printer settings).....         | 10       |
| - Function Description (Bluetooth settings).....       | 10       |
| - Function Description (LAN settings).....             | 11       |
| - Function Description (USB settings).....             | 11       |
| - Function Description (Printer driver settings) ..... | 11       |
| - Function Description (Communication setting).....    | 13       |
| - Bluetooth pairing .....                              | 14       |
| - Bluetooth unpairing .....                            | 15       |
| 4-4. Administration screen (server settings).....      | 16       |
| - How to Start.....                                    | 16       |
| - Function Description.....                            | 16       |
| 4-5. Administration screen (restrictions) .....        | 19       |
| - How to Start.....                                    | 19       |
| - Function Description.....                            | 19       |
| 4-6. Administration screen (spooler display) .....     | 20       |
| - How to Start.....                                    | 20       |
| - Function Description.....                            | 20       |
| 4-7. Administration screen (log) .....                 | 23       |
| - How to Start.....                                    | 23       |
| - Function Description.....                            | 23       |
| 4-8. Importing the configuration file.....             | 24       |

|   |    |
|---|----|
| - Configuration file structure.....       | 24 |
| - Configuration parameters.....           | 25 |
| - Configuration file example.....         | 27 |
| 4-9. File transfer to device storage..... | 28 |
| - Transfer files.....                     | 28 |
| 4-10. Use HTTPS.....                      | 29 |

## Attention

- The copyright for this software is held by SATO CORPORATION.
  - This software and this manual may not be copied or duplicated, whether partially or in their entirety, regardless of the form, without the permission of SATO CORPORATION.
  - This software and this manual may only be used based on the product's license agreement.
  - SATO CORPORATION bears no responsibility for the results of using this software and this manual.
  - The content of this manual may be corrected or revised without prior notification.
  - The utmost care has been taken with the content of this manual. However, if you discover some problem with the content or something otherwise unusual with the content, please contact SATO CORPORATION.
- 
- SATO and SmaPri are registered trademarks and/or trademarks of SATO HOLDINGS CORPORATION.
  - Other company names and product names listed in this manual are registered trademarks and/or trademarks of those respective companies.

## Chapter:4

# Driver Settings (Windows)

**4-1****Install / Uninstall**

-Structure of SmaPri Driver   -Newly install   -Overwrite install   -Uninstall

SmaPri Driver can be installed from installer file (\*.msi).

**Where to store installer files (in Product CD)**

- Open folder to store installer files when select "SmaPri Driver (Windows)" from product CD's main menu.

**Before installation**

- Run the installer as an administrator. If the OS is a 32-bit version, run the x86 installer. If the OS is a 64-bit version, run the x64 installer.
- Since SmaPri Driver has initial value of server port number 8080, installation fails if port number 8080 is used by other applications. Please temporarily stop the application or install it by specifying a different port number in "silent installation".

**Any parameter settings at the installation**

- "SmaPri Driver" setup with any parameter settings by "Configuration file" distributing user device. For the detail, please refer to "[Importing the configuration file](#)".

**- Structure of SmaPri Driver**

"SmaPri Driver for Windows" has the following structure.

**1 . SmaPri Driver**

- It accepts print requests and communicates with the printer.
- It works as a Windows service (Local System account).

**2. SmaPri Driver Setting tool**

- Check and change the setting of "SmaPri Driver".
- It needs administrator rights to do all settings.

## - New install

On Windows devices, the following installation methods are available.

### • Normal installation

- 1) Run the SmaPri Driver installer as a administrator.
- 2) Add start menu to [All programs]->[SATO]->[SmaPri Driver 設定ツール]. And add Windows Service (Local) to "SmaPri Driver".

### • Silent installation

- The installer of "SmaPri Driver for Windows" is Microsoft Windows Installer (msi) format, so you can use silent installation according to the specification of msi format.

Ex. `msiexec /i "D:¥smapri_driver_1.1.0.0_x86_ja.msi" /quiet`

- You can install by changing the server port number of SmaPri Driver by specifying the "SERVER\_PORT" parameter. (Initial value 8080, setting range 1 to 65535)

Ex. `msiexec /i "D:¥smapri_driver_1.1.0.0_x86_ja.msi" SERVER_PORT=8083 /quiet`

## - Overwrite install

In the case of the installation to a device that has SmaPri Driver installed, overwrite installation will be done. In the overwrite installation, the previous setting value is inherited, and if the SmaPri Driver is running, the service will be restarted automatically after overwriting installation.

## - Uninstall

When uninstalling SmaPri Driver, all data and settings in the application will be deleted.

- 1) Select to [Control Panel]->[Programs and Features].
- 2) Select "SmaPri Driver" from the programs list, and click the uninstall button to uninstall SmaPri Driver.

**4-2****Administration screen (status)**

Change settings to start/stop server and connect / disconnect printer.

**- How to Start**

- Select to [All Programs]->[SATO]->[SmaPri Driver 設定ツール]

\* It needs administrator rights to do all settings.

**- Function Description****1) Server status / Control**

Starts and stops SmaPri Driver.

**2) Server URL**

It shows the port number that receives HTTP requests from the client.

To change this setting, see "[Administration screen \(server settings\)](#)".



### 3) Selected printer name

Shows the printer specified as the connection destination.

For Bluetooth ..... Bluetooth device name and BD address

For LAN ..... IP address and TCP port number

For USB ..... USB serial ID

For Printer driver ..... Printer name

For Bluetooth, a list of devices will be displayed when you select "Bluetooth device", and you can select "Discover new device" to scan devices available for pairing. For more information, refer to "[Bluetooth pairing](#)" section. In case of "the device does not have pairing information" or "the device's Bluetooth is disabled", it is displayed as "unpaired".

### 4) Printer setting

Configure the communication settings with the printer.

For details, see "[Administration screen \(printer settings\)](#)".

### 5) Test print

Do a test print. This function is convenient for testing communication with the printer.

SmaPri Driver will check the status by directly connecting to the printer, before sending the test print data. If the printer is turn off will be displaying error message.

If test print failed, refer to "printer settings" at first.

- MB2i series and MB4i series use "Status 3 (MB200i/MB201i,MB400i/MB410i)".
- PW208 series use "Status 4" or "Status 3".
- Other models use "Status 4" or "Status 3".

### 6) Spooler

Display the spooler status.

### 7) View the print job list

Display and check the status of the print job of the spooler.

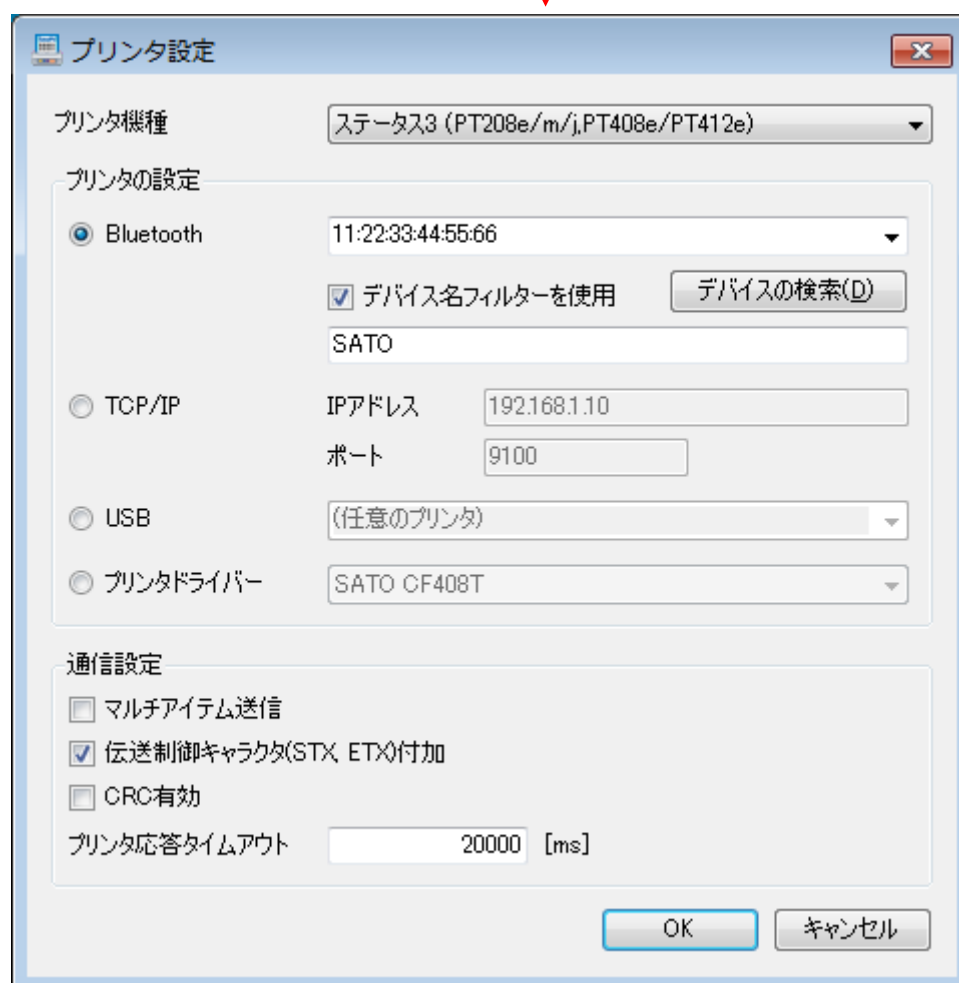
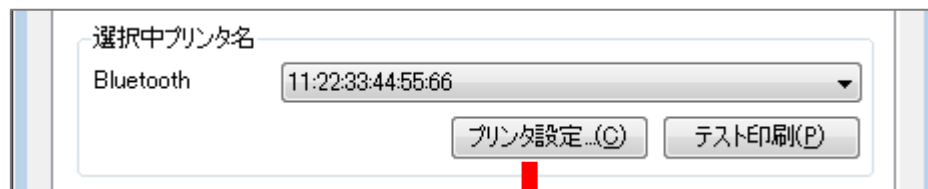
For details, refer to "[Administrator screen \(Spooler display\)](#)".

**4-3****Administration screen (printer settings)**

Configure settings related to printer connection.

**- How to Start**

- Select "プリンタ設定 (Printer settings)" on the "Administration screen (status)".

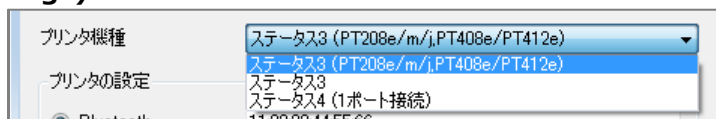
**- Function Description (Reflect setting change)**

The setting change here is reflected by pressing "適用 (apply)" or "OK" on the main screen after closing this screen with "OK".

## - Function Description (Printer settings)

### 1) Printer model

1.

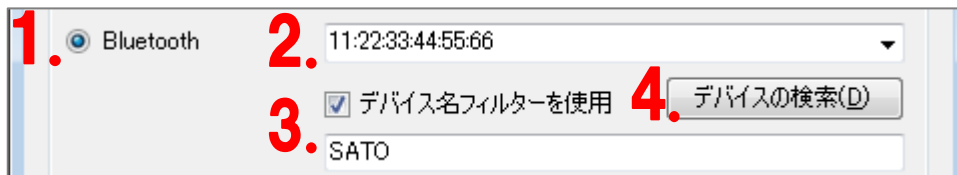


Select to the printer model. Selection is same to printer setting.

The default is "Status 3 (MB200i/MB201i,MB400i/MB410i)".

\*Other printer (e.g. PW208) defaults are "Status 4".

## - Function Description (Bluetooth settings)



### 1) Bluetooth connection

Connect to the printer via Bluetooth.

### 2) Bluetooth device

It shows the device name and BD address of the paired printer.

Select the printer to connect to.

### 3) Use "Bluetooth device name filter" (デバイス名フィルターを使用)

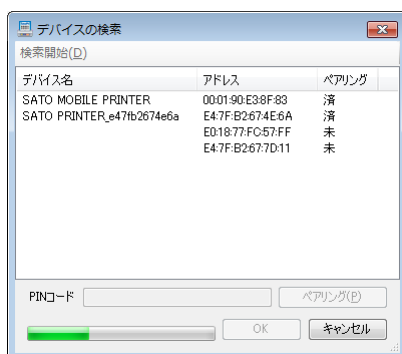
It filters the devices of "Bluetooth device" list and "Device San" list with specified string.

Default setting is "disabled". Default filter string is "SATO".

### 4) Discover device (デバイスの検索)

Discover nearby Bluetooth devices. If a usable Bluetooth device is not connected to the Windows device, an error occurs and the following search screen is not displayed.

\* If any devices are not found, please make sure the Bluetooth stack is made by Microsoft Corp.



**- Function Description (LAN settings)**

1. ☒ TCP/IP

2. IPアドレス 192.168.1.1

3. ポート 1024

**1) LAN connection**

Connect to the printer via the LAN (TCP/IP).

**2) IP address**

Set the IP address of the printer.

**3) TCP port**

Set the TCP port number. The default is "1024".

**- Function Description (USB settings)**

1. ☒ USB

2. (任意のプリンタ)

**1) USB connection**

Connect to the printer via USB.

**2) USB serial ID**

Set the USB serial ID of the printer.

\* When "Any printer (任意のプリンタ)" is specified, it will automatically print from the USB printer. In this case, please connect only one USB printer at the same time. When connecting more than one printer, it is not possible to specify which printer will print.

**- Function Description (Printer driver settings)**

1. ☒ プリンタドライバ

2. SATO CL4NX-J 203dpi

**1) Printer driver connection (プリンタドライバ接続)**

Connect to the printer via printer driver.

When printer driver is selected, the printer driver communicates with the printer and requests such as printer status acquisition can not be used. The spooler function is also invalid.

**2) Printer name**

Select printer driver name in the list.



## - Function Description (Communication setting)



### 1) Multi item transmission

To specify print data transmit condition. The default is "**Disabled**".

**Enable**: Sending of next print item without waiting to complete printing current item.

**Disabled**: Sending of next print item waiting to complete printing current item.

### 2) Enable transmission control character

To specify whether transmission control character (STX/ETX) are automatically added to the print data. The default is "**Enable**". Usually specifies "**Enable**", so it does not need to change.

If "Enable CRC" is "**Enable**", this item is always "**Enable**".

### 3) Enable CRC

Set the CRC check. The default is "**Disabled**".

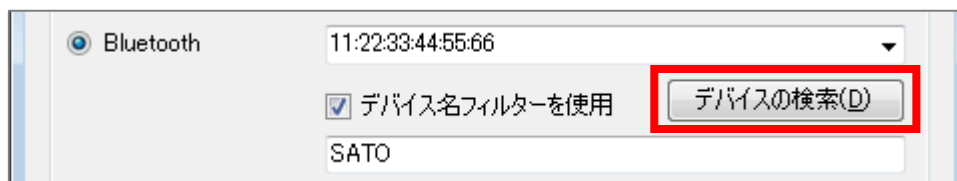
This setting must be same as the printer. If "Printer: Disabled" and "SmaPri Driver: Enable", will be the cause of the failure, such as print data is canceled.

### 4) Printer reply timeout

To set the timeout value when communicating with the printer and when sending and receiving data. The default is "20000 milliseconds (20 seconds)".

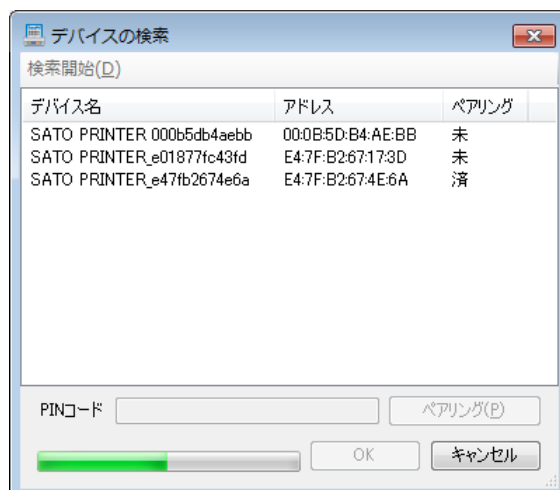
## - Bluetooth pairing

- 1) Click "デバイスの検索(Search for device)" under Bluetooth.



- 2) Automatically start to search for Bluetooth devices

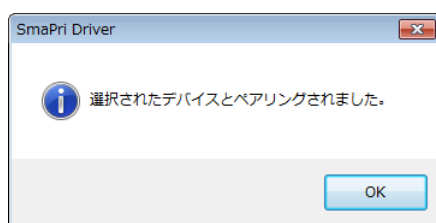
Click "検索開始(Start)" to scan again if you cannot find the printer you want to connect to.



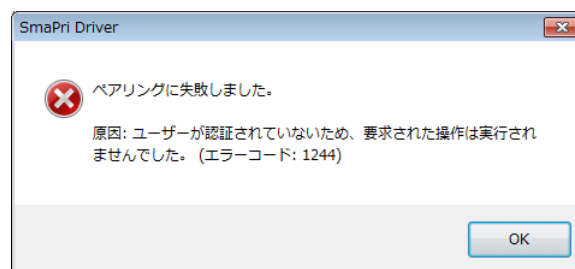
- 3) Select the printer you want to pair, enter the PIN code, and click "ペアリング(Pairing)". The PIN code specifies the setting value of the printer.

The default PIN code is following.

- PW208 series, CL4NX/CL6NX series: "0000" (4 zeros)
- PT208 series, PT408e/PT412e: "0000000000000000" (16 zeros)
- Other model, please refer to "User Manual" of your printer.

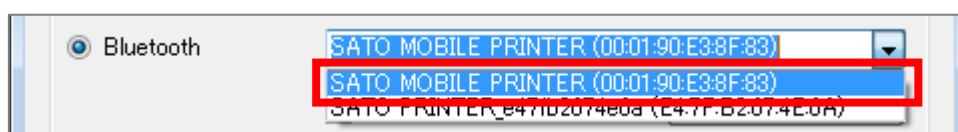


Pairing success



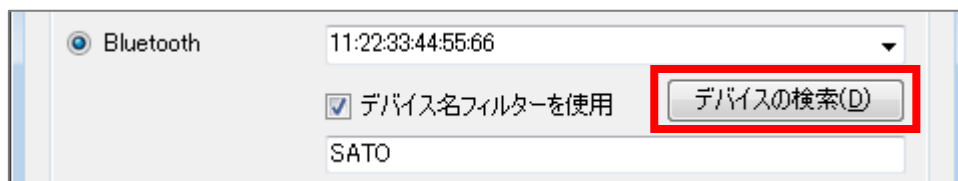
Pairing failure

- 4) If the pairing is successful, the printer can be selected on the main screen.

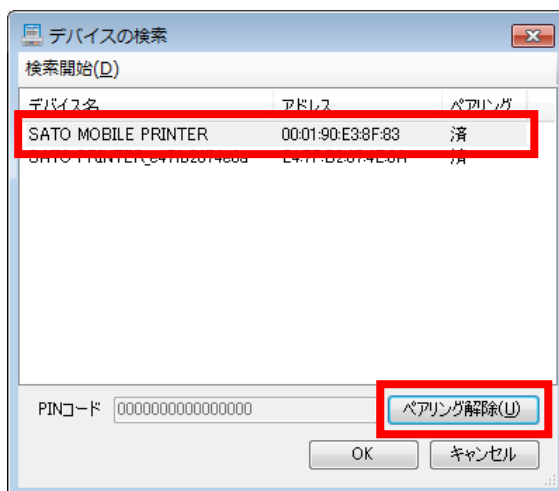


## - Bluetooth unpairing

- 1) Click "デバイスの検索(Search for device)" under Bluetooth.



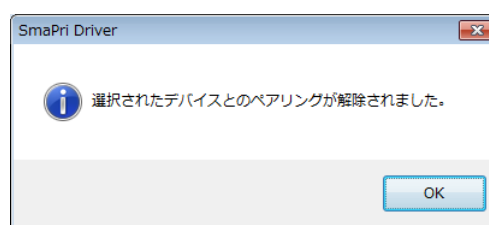
- 2) Select a printer that is set to "済(done)", and click "ペアリング解除(Unpairing)".



- 3) The confirmation screen of unpairing is displayed. If you select "はい(Yes)", pairing is canceled.



Unpairing confirmation screen



Notification of unpairing

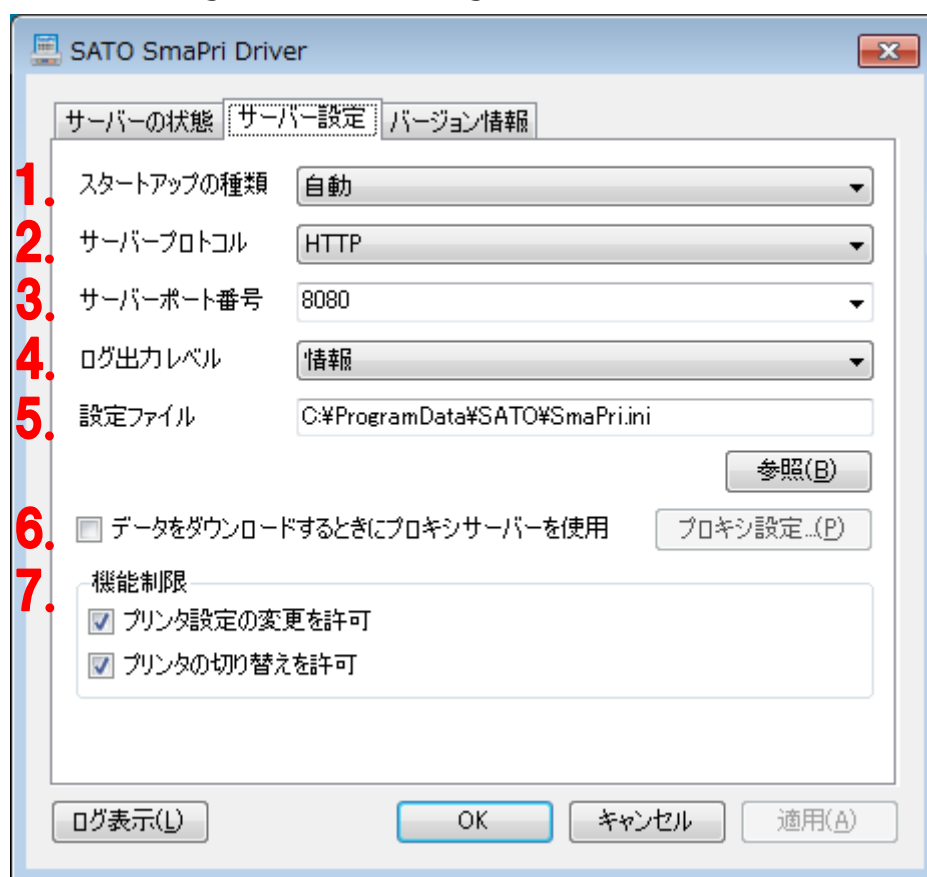


**4-4****Administration screen (server settings)**

Configure server settings including server port number and log level.

**- How to Start**

- Select "サーバー設定 (Printer settings)".
- \* It needs administrator rights to do all settings.

**- Function Description**

The setting change here is reflected by pressing "適用 (apply)" or "OK" on the main screen after closing this screen with "OK".

**1) Startup type**

The initial value is "自動(automatic)". SmaPri Driver is started automatically when the Windows starts up.

**2) Server protocol**

Select for server protocol (HTTP/HTTPS). The default is "HTTP". Usually specifies "HTTP", so it does not need to be changed. If you need to use "HTTPS", please refer to "[Use HTTPS](#)".

### 3) Server port

To set the port number that receives HTTP requests from the client. The default is "8080".  
In order to apply the settings, restart the SmaPri driver.

### 4) Log level

To set the operation log output level.

The default is "**Warning**". Entries that correspond to error and warning are output to the log.

To check the contents of the log, see "[Administration screen \(Log\)](#)".

Every HTTP requests will be saved into log when selects "information" log level. This may cause storing user name and password for basic authentication, GET request parameters and data as plain text in the log. Do not set to "information" if security is concerned. Recommend to enable "restrictions" to avoid unexpected log level change by user.

| Content  | Log level |       |         |             |
|--|-----------|-------|---------|-------------|
|  | OFF       | Error | Warning | Information |
| <ul style="list-style-type: none"> <li>- Server start and stop</li> <li>- HTTP communication error</li> <li>- Communication error with printer</li> <li>- Other serious errors</li> </ul>  | No        | Yes   | Yes     | Yes         |
| <ul style="list-style-type: none"> <li>- Errors for HTTP requests and parameters (error content)</li> <li>- Errors when modifying settings with the administration screen</li> </ul>   | No        | No    | Yes     | Yes         |
| <ul style="list-style-type: none"> <li>- HTTP communication connection and disconnection</li> <li>- Content of requests by HTTP communication and that result</li> <li>- Modifying setting with the administration screen</li> </ul> | No        | No    | No      | Yes         |

### 5) Configuration file

Input the full path of the configuration file. The configuration file will be imported during the SmaPri Driver startup. The default file path is "C:¥ProgramData¥SATO¥SmaPri.ini".

For more information, refer to "[Importing the configuration file](#)".

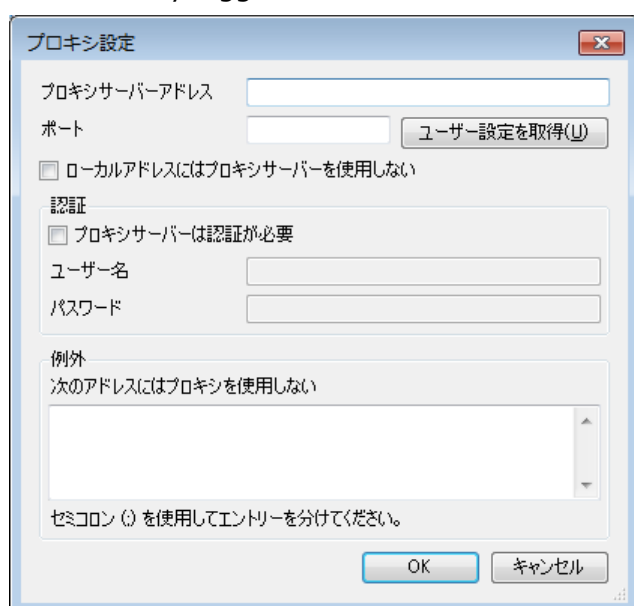
## 6) Proxy settings

Specify whether to use a proxy server. The default is "Disabled". When enabled, the proxy settings are applied to the URL specified by the following parameters.

- "\_\_format\_archive\_url"
- "\_\_command\_url"
- When URL is specified for graphic variable

Proxy settings are made on the screen below.

In "Retrieve user settings", you can retrieve the setting (proxy server address and port) of the currently logged on account.



## 7) Restrictions

Limit to SmaPri Driver configuration changing.

For more information, refer to the "[Administration screen \(Restrictions\)](#)".

**4-5****Administration screen (restrictions)**

設定項目の操作を制限します。

**- How to Start**

- Select "サーバー設定 (Printer settings)".
- \* It needs administrator rights to do all settings.

**- Function Description**

The setting change here is reflected by pressing "適用 (apply)" or "OK" on the main screen after closing this screen with "OK".

The settings that can be restricted with this setting are "SmaPri Driver Setting Tool" setting change. Setting change by request is always effective.

**1) Allow changing printer settings (プリンタ設定の変更を許可)**

Allow standard user to change printer settings. The default is "check ON = permitted".

**2) Allow switching of printers (プリンタの切り替えを許可)**

Allow switching of printers by standard users. The initial value is "check ON = permitted".

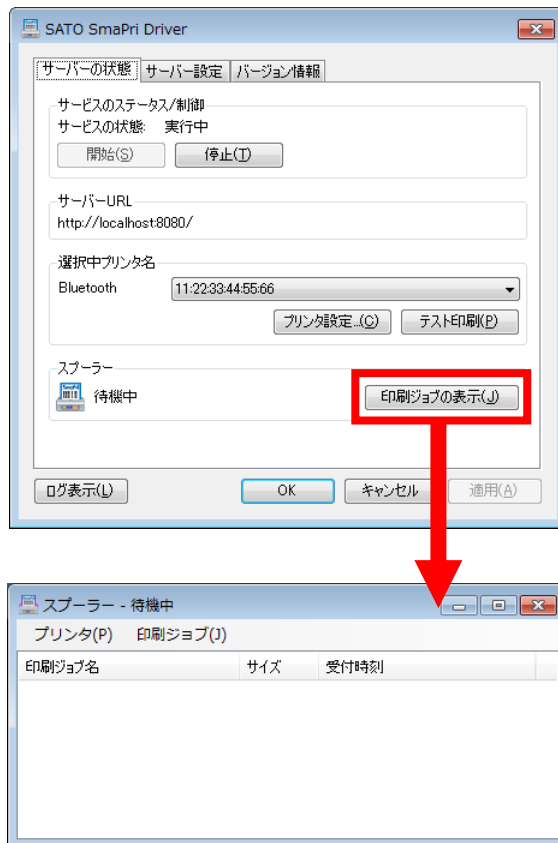
Even if this setting is set to "check off", printer setting can be switched from "[Administration screen \(Printer setting\)](#)" if "Allow changing printer setting" is "Check ON = Allowed".

**4-6****Administration screen (spooler display)**

Set / get job name.

**- How to Start**





- Select "印刷ジョブの表示 (Display print job)" on the "Administration screen (status)".

**- Function Description**

## 1) Spooler status display

To show the status of the spooler as messages and colors.

The spooler status is also displayed as an icon on the status bar at the top of the screen.

| Spooler status   | Color  | Icon  | Description   |
|------------------|--------|---|---|
| Standby          | Blue   |  | There is no data in the spooler. Regardless of the printer status, the spooler is always this status when there is no data in it. |
| Printing         | Blue   |  | Sending data to the printer or the printer is printing.   |
| Offline          | Yellow |  | The printer is offline. The printer status (no error, buffer near full, battery near end) is also displayed.                      |
| Paused           |        |   | The spooler is paused.  |
| Connection error | Red    |  | The spooler cannot connect to the printer.  |
| Printer error    |        |   | The printer is in the error state. The error details are also displayed.  |

## 2) Menu bar

### ・ [プリンタ(Printer)]-[一時停止(Paused)]・[再開(Resumed)]

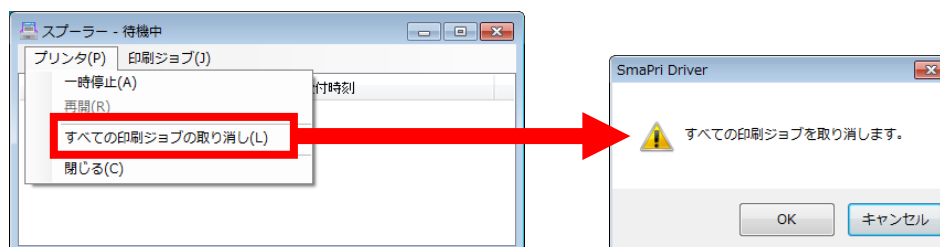
You can pause and resume the spooler.

If the spooler is paused while sending data, the spool is paused after it finishes sending print data.



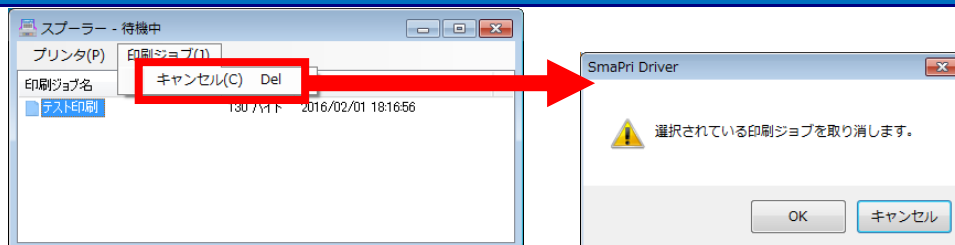
### ・ [プリンタ(Printer)]-[すべての印刷ジョブの取り消し(Delete all)]

To delete all spool print job.



### ・ [印刷ジョブ(Print job)]-[キャンセル(Cancel)]

Cancels the selected print job. When multiple print jobs are selected, all selected print jobs are canceled. Cancellation is also possible from the right click menu.



### 3) Print job list

“Job Name”, “Created Date Time” and “Size” will be displayed.

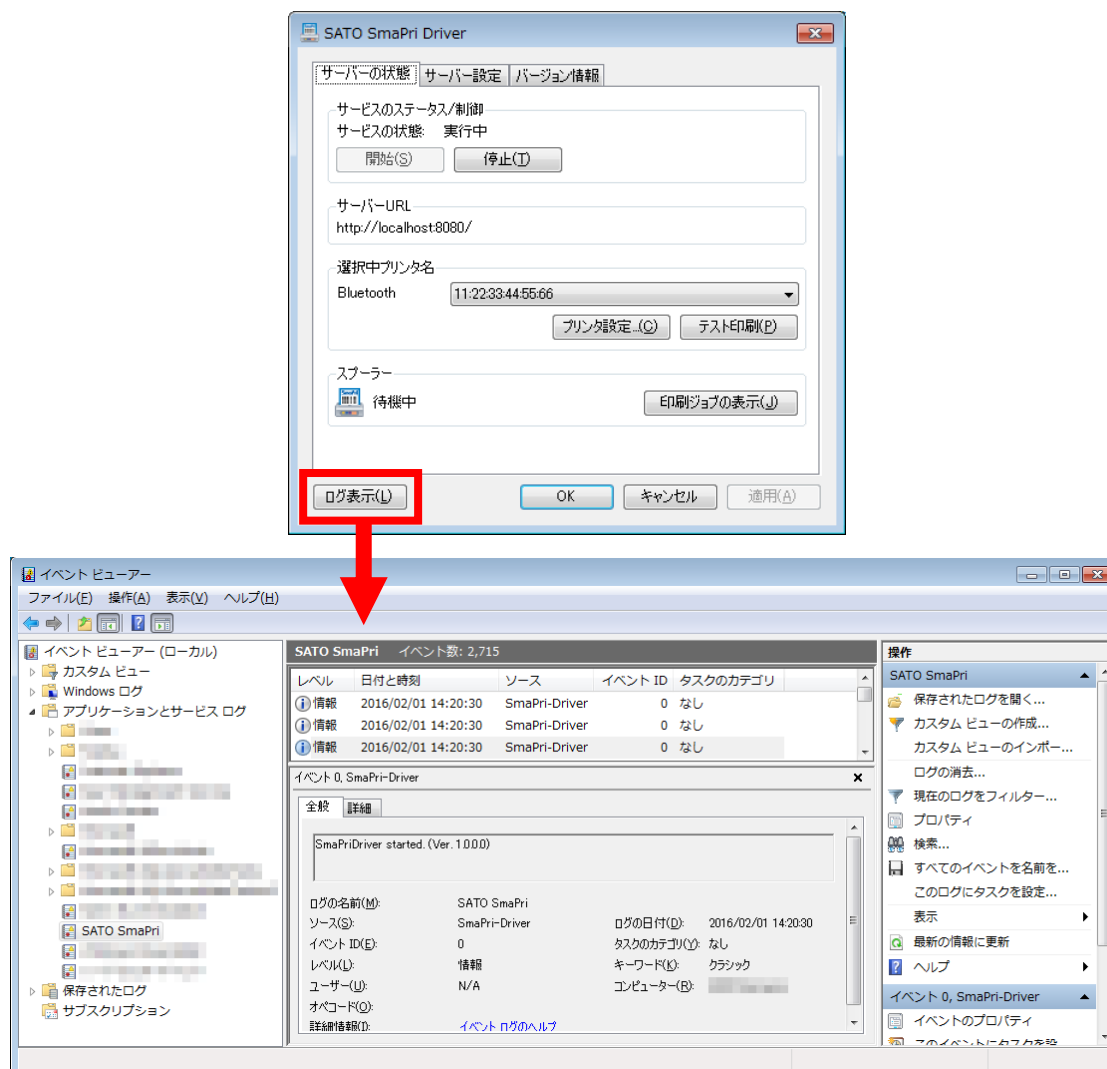
Print jobs are printed in order from the top of the list, and new print jobs are added to the bottom.

**4-7****Administration screen (log)**

Display log.

**- How to Start**

- Select "ログの表示 (Display log)" on the "Administration screen (status)".

**- Function Description****Log list display**

Displays the event log of SmaPri Driver output to Event Viewer.

**[event log Output]**      Log name :    SATO SmaPri

Source name :    SmaPri-Driver

\* "SATO SmaPri" event log is created in "Application and service log"

\* The default value of "Maximum log size" follows the OS default (1028 KB in Windows 8.1 / 8/7)

**Save**

When saving the log, specify a path and file name from "Operation menu" "Save and save all events".



**4-8****Importing the configuration file**

Import administration settings from the configuration file.

The configuration file will be imported during the SmaPri Driver startup if the full path of a valid configuration file has been specified at the server settings screen.

ASCII, UTF-8 (with BOM) and UTF-16 (with BOM) can be used to encode the configuration file.

A notification will be displayed in the status bar during import.

When importing the setting file, a notification is output to the event log.

(Example: Settings are importing from 'C:¥ProgramData¥SATO¥SmaPri.ini'...)

**- Configuration file structure****1) Parameter**

Specify one parameter per line using the following format.

**Parameter Name** = **Value**

**2) File encoding**

ASCII, UTF-8 (with BOM) and UTF-16 (with BOM) can be used.

UTF-8 and UTF-16 files will be identified by their byte order marks.

**3) Special characters**

| Character type                | 説明  |
|-------------------------------|---|
| <b>Newline characters</b>     | CR, LF, CR+LF   |
| <b>Whitespace characters</b>  | Spaces before and after parameter names and values are ignored.   |
| <b>Upper-case, Lower-case</b> | Parameter names and enumeration values are not case sensitive.  |
| <b>Double quotes</b>          | Can be used to quote values, and function as the escape character for a double quote used in values; Cannot be used in parameter names. |
| <b>Semicolons</b>             | Lines starting with the semicolon are treated as comments and ignored.  |
| <b>Blank lines</b>            | Lines with only spaces or a line break are ignored.   |

## - Configuration parameters

You can only import settings whose parameters are included in the configuration file.

Values marked with the asterisk (\*) are default settings for SmaPri Driver.

| Parameter name           | Values   | Description   |
|--------------------------|--|---------------|
| Server protocol          |  |               |
| server_protocol          | http   | HTTP          |
|                          | https  | HTTPS         |
| Server port number       |  |               |
| server_port              | 1~65535  | Default: 8080 |
| Log level                |  |               |
| log_level                | error  | Error         |
|                          | warning  | Warning (*)   |
|                          | information  | Information   |
|                          | off  | OFF           |
| Log file path (autosave) |  |               |
| log_file_path            | Full path name starting with "/"<br>Default: "" (void) |               |

|   |   |   |
|---|---|---|
| Configuration file (for importing settings)       |   |   |
| import_settings_file_location                     | File path<br>Default: /mnt/sdcard/SATO/SmaPri.ini |   |
| Communication protocol between SmaPri and printer |   |   |
| printer_type                                      | mobile  | Status 3 (MB200i/MB201i, MB400i/MB410i) (*) |
|   | status3   | Status 3                                    |
|   | status4_1port                                     | Status 4 (1 port connection)                |
|   | standard  | Old compatibility (Status 3)                |
| Printer I/F type                                  |   |   |
| printer_interface_type                            | bluetooth   | Bluetooth connection (*)                    |
|   | lan   | LAN connection                              |
| Bluetooth address                                 |   |   |
| bluetooth_device_address                          | BD address<br>Example: 00:01:90:E3:84:77          |   |
| Bluetooth device name filter                      |   |   |
| bluetooth_device_filter_enabled                   | false   | Disable (*)                                 |
|   | true  | Enable                                      |
| Bluetooth device name filter character string     |   |   |

|                                       |  |   |                 |
|---------------------------------------|--|---|-----------------|
| bluetooth_device_filter_string        |  | Default: SATO   |                 |
| IP address (LAN connection)           |  |   |                 |
| lan_printer_ip_address                |  | IP address<br>Example: 192.168.1.1  |                 |
| TCP port (LAN connection)             |  |   |                 |
| lan_printer_tcp_port                  |  | 1~65535 (default: 1024)   |                 |
| USB Serial Number                     |  |   |                 |
| usb_serial_number                     |  | USB serial number.<br>Example:"tmqe0027"<br><br>* If it is not set (empty character), it automatically distinguishes one connected USB printer. Please do not connect two or more USB printers at the same time when using unset. |                 |
| Multi item transmission               |  |   |                 |
| multi_item_sending                    |  | false   | Single item (*) |
|                                       |  | true  | Multi item      |
| Enable transmission control character |  |   |                 |
| tc_character_enabled                  |  | false   | Disable         |
|                                       |  | true  | Enable (*)      |
| Enable CRC                            |  |   |                 |
| crc_enabled                           |  | false   | Disable (*)     |
|                                       |  | true  | Enable          |
| Printer reply timeout                 |  |   |                 |
| receive_timeout                       |  | 1~2147483647 [ms]<br>Default: 20000 [ms]  |                 |
| Enable Proxy                          |  |   |                 |
| proxy_enabled                         |  | false   | Disable (*)     |
|                                       |  | true  | Enable          |
| Proxy server address                  |  |   |                 |
| proxy_address                         |  | IP Address<br>Example:192.168.1.1   |                 |
| Proxy server port number              |  |   |                 |
| server_port                           |  | 1~65535   | Default: 8080   |
| Do not use proxy for local address    |  |   |                 |
| proxy_bypass_on_local                 |  | false   | Enable proxy(*) |
|                                       |  | true  | Disable proxy   |
| Proxy authentication                  |  |   |                 |

|  |  |                   |
|--|--|-------------------|
|  |  |                   |
| proxy_authentication                   | false                                    | Disable (*)       |
|  | true                                     | Enable            |
| Proxy authentication user name         |  |                   |
| proxy_user_name                        | User name(Text)                          |                   |
| Proxy authentication password          |  |                   |
| proxy_password                         | Password(Text)                           |                   |
| Proxy exception address                |  |                   |
| proxy_bypass_list                      | Address(Text)                            |                   |
|  | Example: "192.168*;10.*;www.sato.co.jp;" |                   |
| Delete configuration file after import |  |                   |
| delete_me                              | false                                    | Keep the file (*) |
|  | true                                     | Delete the file   |

### - Configuration file example

```

printer_type = status4_1port           ; Set communication protocol to "status 4".
printer_interface_type = bluetooth      ; Set communication interface to "Bluetooth".
bluetooth_device_address = 00:01:90:E3:84:77 ; Set BD address.
delete_me = true                       ; Delete configuration file after import.

```

**4-9****File transfer to device storage**

Transfer some files with SD card etc.

You can transfer files between development environment and a device using SD card etc. For Windows version of SmaPri Driver, it is used to transfer "format file", "log file", "configuration file".

- **Format file (\*.spfmtz)**

Register a format file in advance before printing instead of registering a format during printing.

Usually, you register the format file at the time of printing. For details, please refer to "Print Format" or "Register Format" in "HTTP Reference".

- **Log file**

The log file is saved in the path specified when saving.

Please refer to "[Administration screen \(log\)](#)" for save method.

- **Configuration file**

If "Configuration file" exists in the path specified on "Administration screen (server settings)", import the setting values.

Please refer to "[Administration screen \(server settings\)](#)" and "[Importing the configuration file](#)".

## **- Transfer files**

### **Format file, Configuration file**

- 1) Copy the file to any directory on the SD card in development-machine.
- 2) Insert the SD card in the Android device. You can use it while wearing the SD card, or copy the file to the main unit storage.

To use the copied file, specify the full path of the file. Please confirm the hierarchy and structure of the folder in the user guide etc. of your device.

### **Log file**

- 1) When a log is saved to SD card, connect that SD card to development-machine. When a log is saved in local storage, connect it to development-machine with a USB cable.
- 2) Since the log file is created with the path and file name specified at the time of saving, copy it to the development machine.

**4-10****Use HTTPS**

You can use HTTPS on SmaPri Driver.

For Web applications running on an HTTPS server, SmaPri Driver may not be available due to cross domain restrictions. By importing the server certificate into SmaPri Driver, the server function of SmaPri Driver can be used with HTTPS.

Notes: It is the SmaPri Driver itself that supports HTTPS by importing electronic certificates. The URL of the format file or image file specified by the request parameter is HTTP only.

Ex.) **https://localhost:8080/Format?\_\_format\_archive\_url=http://example.com/format.spfmtz**

Notes: How to obtain the electronic certificates, please contact the issuing organization of the electronic certificate. How to installing the certificate on Windows OS, please contact your OS vendor or terminal vendor.