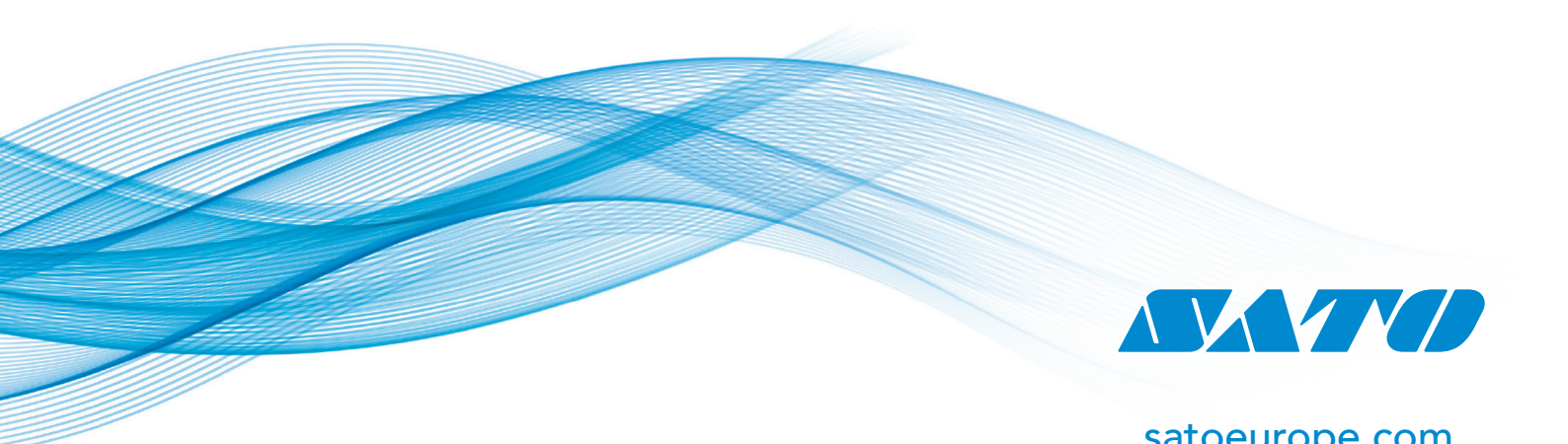




Solutions for
Automotive Industry
- Parts manufacturer



satoeurope.com

Receiving / Parts storage

Tag parts at receiving to capture data during production for better inventory control

Streamline receiving operation (Eliminate manual writing)

Print barcode or QR code labels with digitised information such as storage location and shelf life on parts received.



Enhance efficiency of receiving operation

- Voice-activated printing of labels
- Hands-free operation using wearable devices
- Utilise character recognition technology to print receiving labels

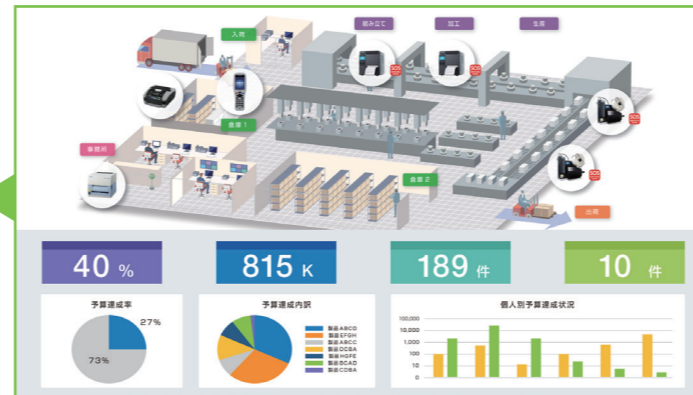


Processing / Assembly

Analysis of collected data records can be used towards preventative maintenance

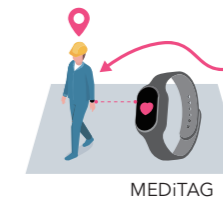
Visualise production process

Centrally manage data of production processes to visualise productivity and identify potential bottlenecks that can be addressed for improving total throughput.



Manage safety and measure performance of workers using Vital Monitor Beacon 'MEDiTAG'

Use MEDiTAG to acquire worker's status such as location, heart rate and detect falling accident for better labour management. It can also be used for safety management of high-risk areas or activities such as painting process and for work analysis to find the best environment to optimise worker's performance.



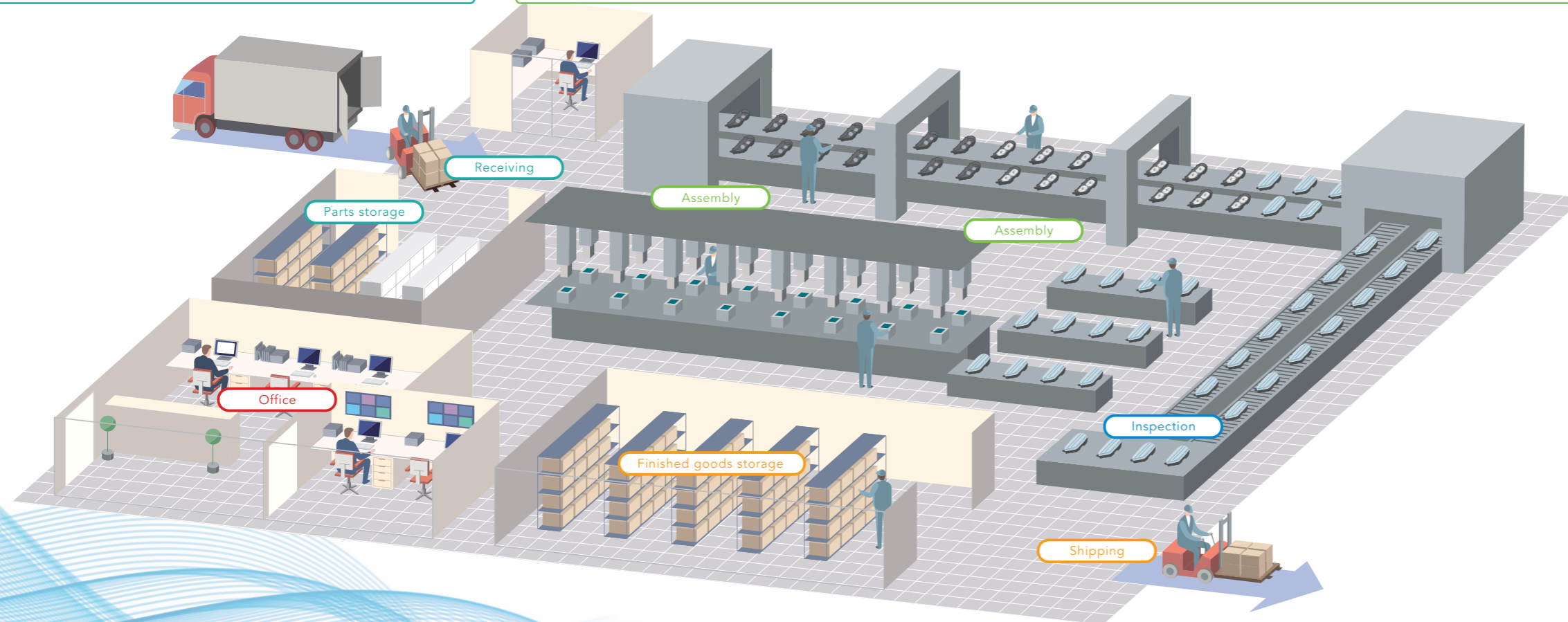
Enhance mold management with location tracking technology

Apply tag on each mold so that it can be read within the factory. SATO works with indoor location tracking solution providers such as 'Quuppa' to help you enhance your work efficiency by easily locating the right mold to be used for production.



Improve traceability with identification label printing

SATO offers various printer models and label types suitable for your printing needs in improving traceability.

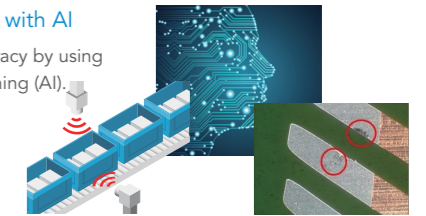


Inspection

Automate inspection process to save labour & enhance efficiency

Automate inspection with AI

Improve inspection accuracy by using image-based Deep Learning (AI).



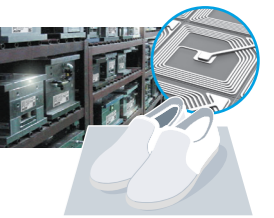
Streamline operation through voice data entry

Using voice technology to record inspection data enables inspection to be done hands-free without need to switch hands from inspection tools to inspection sheet for manual recording. This saves time and greatly enhances efficiency.



Improve product quality

- Track usage count of tools and molds using RFID to ensure proper maintenance is performed for optimum product quality.
- For EPA (ESD Protected Area), SATO works with suppliers to provide ESD solutions such as antistatic footwear checker using RFID.



Shipping / Finished goods storage

Visualise people and things at production site

Entry/Exit control of work area

For security and hygiene management, RFID employee ID card is used for entry/exit to work areas/rooms. This also enables tracking of employee location in case of emergency.



Fixed asset management

Apply RFID tags or durable labels on cage carts and tools for asset management.

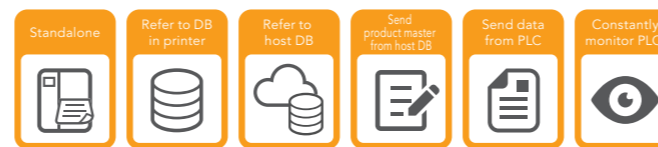


Shipping / Finished goods storage

Print identification slip on label without need for manual cutting and sorting

Print and cut identification slip provided in PDF format

SATO's CL4NX printer with Application Enabled Printing (AEP) technology enables user to automatically print and cut each identification label into individual pieces even if data was provided in PDF format by suppliers.

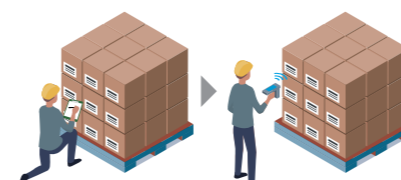


* Availability subject to label layout
* Application Enabled Printing (AEP) platform is a powerful on-board intelligence which allows user to utilise SATO printer as a robust standalone printing solution



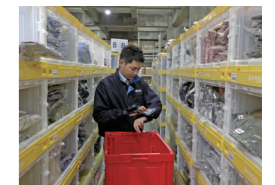
RFID improves worker productivity in inventory control

With RFID technology, worker can save time when performing inventory count. Other than streamlining inventory control, RFID also enables First-In-First-Out management of finished goods.



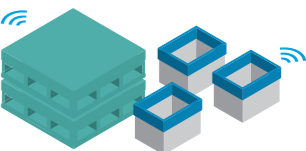
Improve efficiency on parts picking

Visual Warehouse® route navigation system uses 3D map and audio navigation to enhance efficiency of parts picking. System calculates shortest picking route using its proprietary algorithm and provides route with picking order to picker via ipod worn on his / her arm.



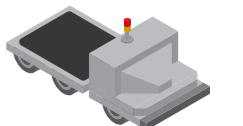
Prevent loss and better manage pallet / returnable box

Use RFID and location tracking technologies to track location of pallet / returnable box. This helps to save time and labor in searching for items as well as prevent misplacement and loss.



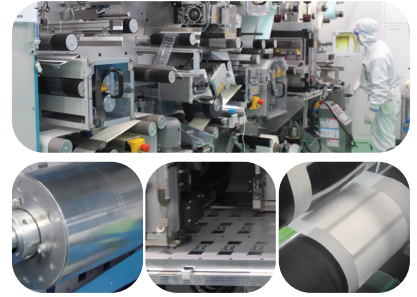
Enhance location tracking of forklift and Automatic Guided Vehicle (AGV)

Location management of forklift and AGV prevents crowded traffic in work area which might affect operations.



The value of SATO's RFID

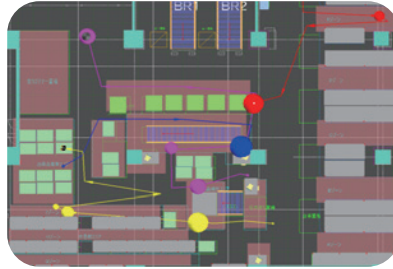
SATO is capable of manufacturing RFID tags equipped with not just standard inlays but also original inlays tailored to customer's requests. Antennas are designed and manufactured in our high-speed production facility and then converted to tags and labels to suit customer's operations. With our experience and know-how in label production, we ensure the quality of the RFID tags and labels which are used in the one-stop solutions we provide to customers to tackle their challenges.



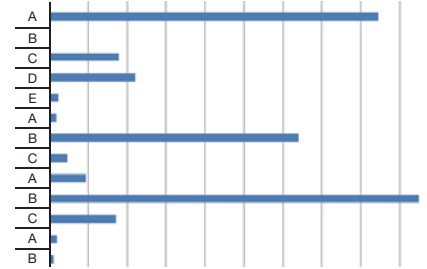
Location tracking technology Quuppa



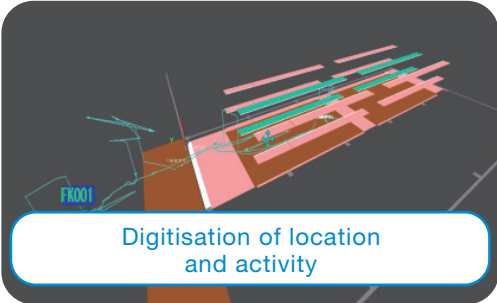
Digitise workload by analysing operation time and worker's position against the target



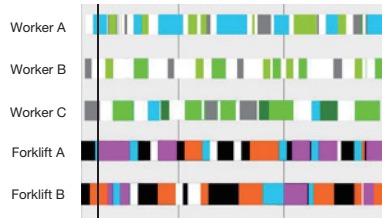
Paths taken



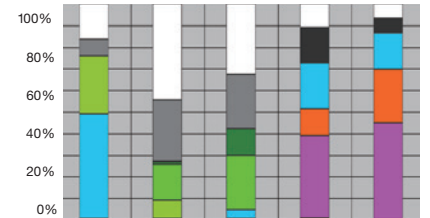
Distance travelled



Digitisation of location and activity

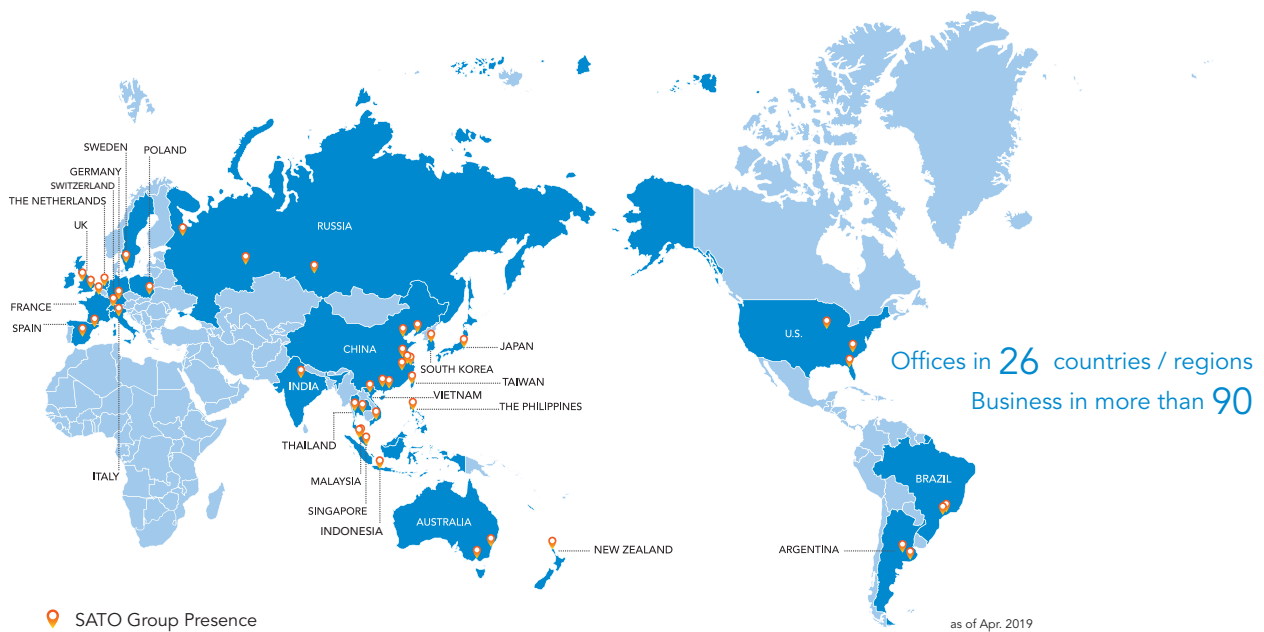


Time spent at area (by hours)



Time spent at area (by ratio)

SATO global presence



For more information,
please contact your local
SATO office, or visit:

satoeurope.com



Ceaseless Creativity for a Sustainable World

© 2019 SATO CORPORATION. All rights reserved.
For more information, please contact your local
SATO office, or visit: satoeurope.com