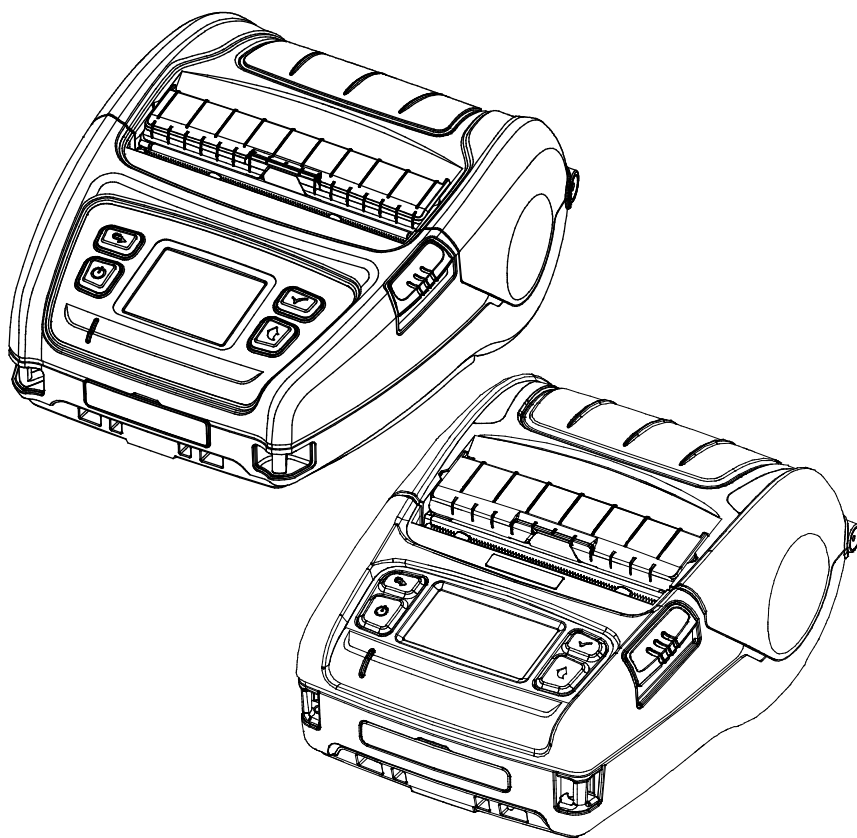




OPOS Driver Installation Guide

PV3/PV4

BARCODE PRINTER
Ver. 1.01



Introduction

This is a manual for SATO OPOS DRIVER program, SATO OPOS DRIVER setup, and making application using SATO OPOS DRIVER.

Before use SATO devices, set and configure devices by using SATO OPOS driver Setup Utility.

Throughout this manual, “OLE for Retail POS” is called “OPOS”.

Throughout this manual, “Unified for Retail POS” is called “UPOS”.

[Further Source]

OLE for Retail POS committee available from <http://monroecs.com/opos.htm>

It is advisable to read the contents of this manual carefully before using the printer for the first time.

Table of Contents

1. Environment	4
1-1 Features.....	4
1-2 Operation Environment	4
1-3 Accessible Devices	5
2. Installation and Uninstallation	6
2-1 Installation	6
2-2 Uninstallation.....	9
3. Precautions.....	9

1. Environment

1-1 Features

- Through these standardized API functions, you can develop POS systems easily.

1-2 Operation Environment

Operating System	Windows XP SP3 (32bit) Windows XP SP1 (64bit) Windows Server 2003 SP1 (32/64bit) Windows Vista (32/64bit) Windows Server 2008 (32/64bit) Windows 7 (32/64bit) Windows 8 (32/64bit) Windows 10 (32/64bit)
Supported Languages	Microsoft Visual Basic Version 6.0 Microsoft Visual C++ Version 6.0 Microsoft .NET(C#, VB)

1-3 Accessible Devices

1) Label Printer

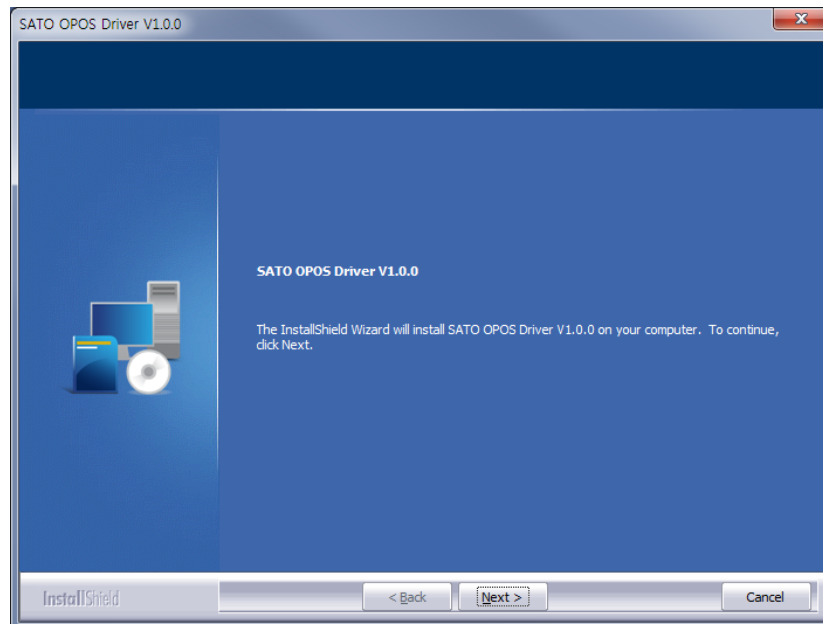
Model	Serial	USB	Bluetooth	Wireless Lan
PV3	O	O	O	O
PV4	O	O	O	O

2. Installation and Uninstallation

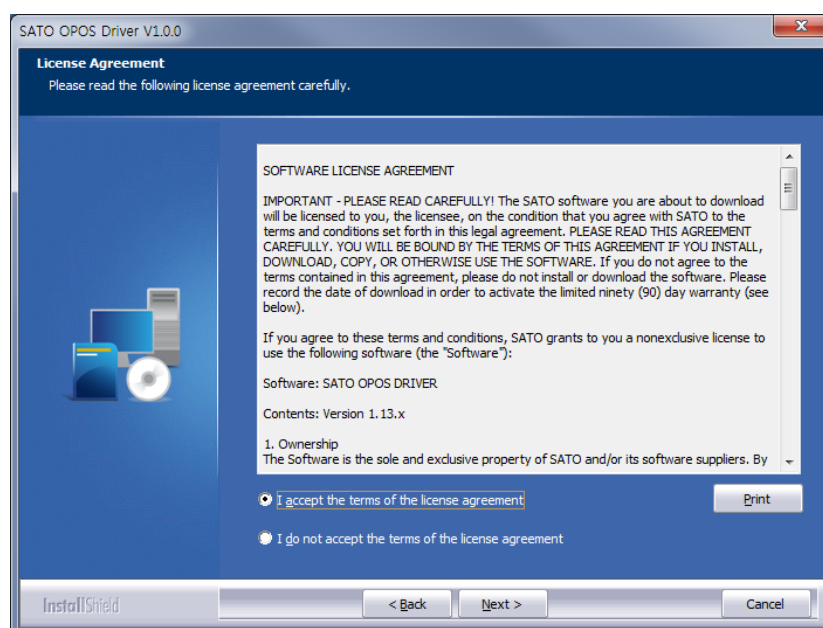
The SATO OPOS driver includes Control Object, Service Object, OPOS Setup Utility and sample programs.

2-1 Installation

- 1) Run the OPOS Driver installation file.
- 2) "Welcome" dialog is displayed.

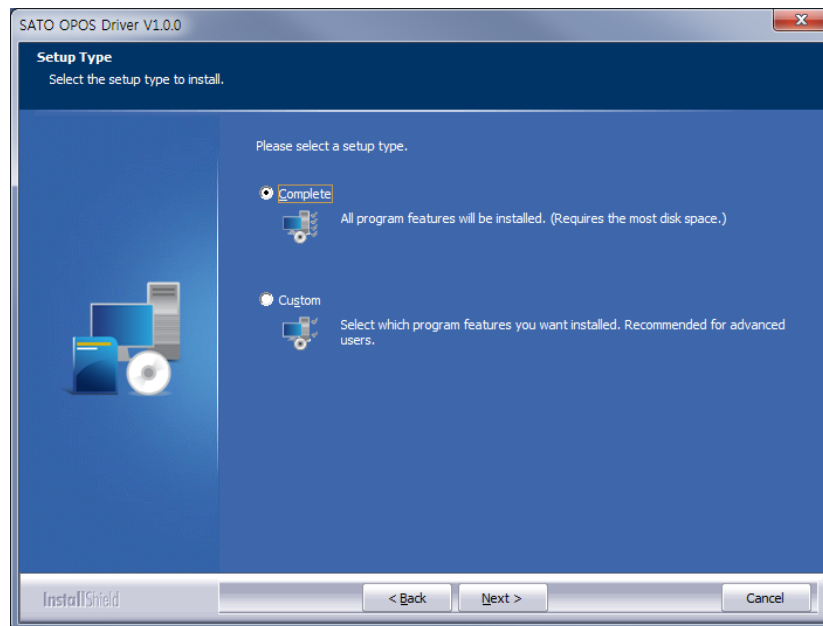


- 3) Agree on the software license. At the moment of installation, the user consents to the license policy of SATO.

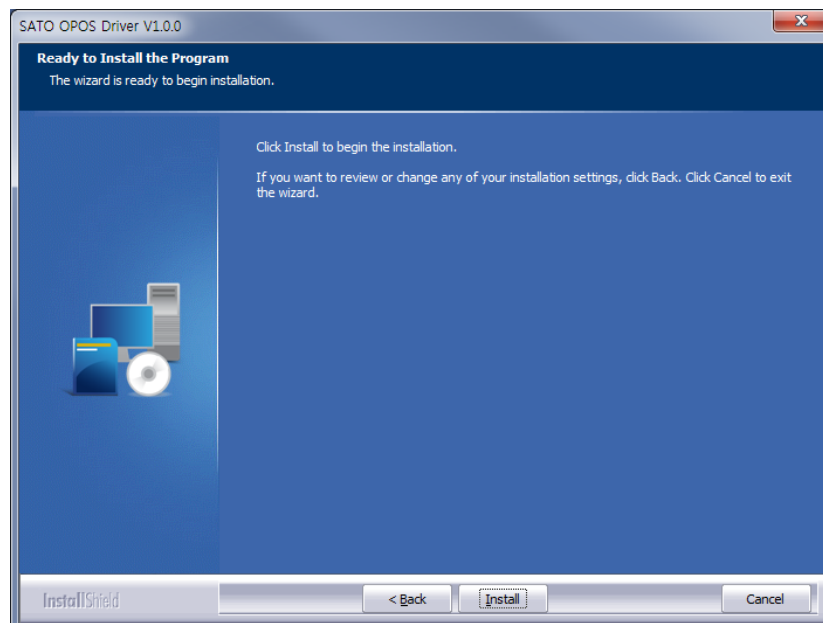


- 4) Please select a type of installation. The default installation location is as follows.

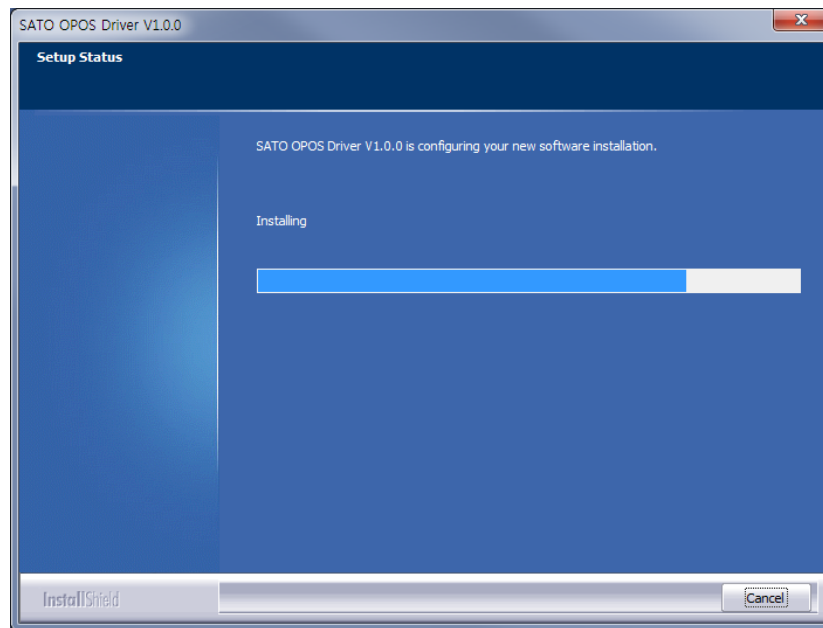
- * 32bit OS: "C:\Program Files\OPOS\SATO OPOS DRIVER\"
- * 64bit OS: "C:\Program Files (x86)\OPOS\SATO OPOS DRIVER\"



5) The Setup confirmation box will be displayed.

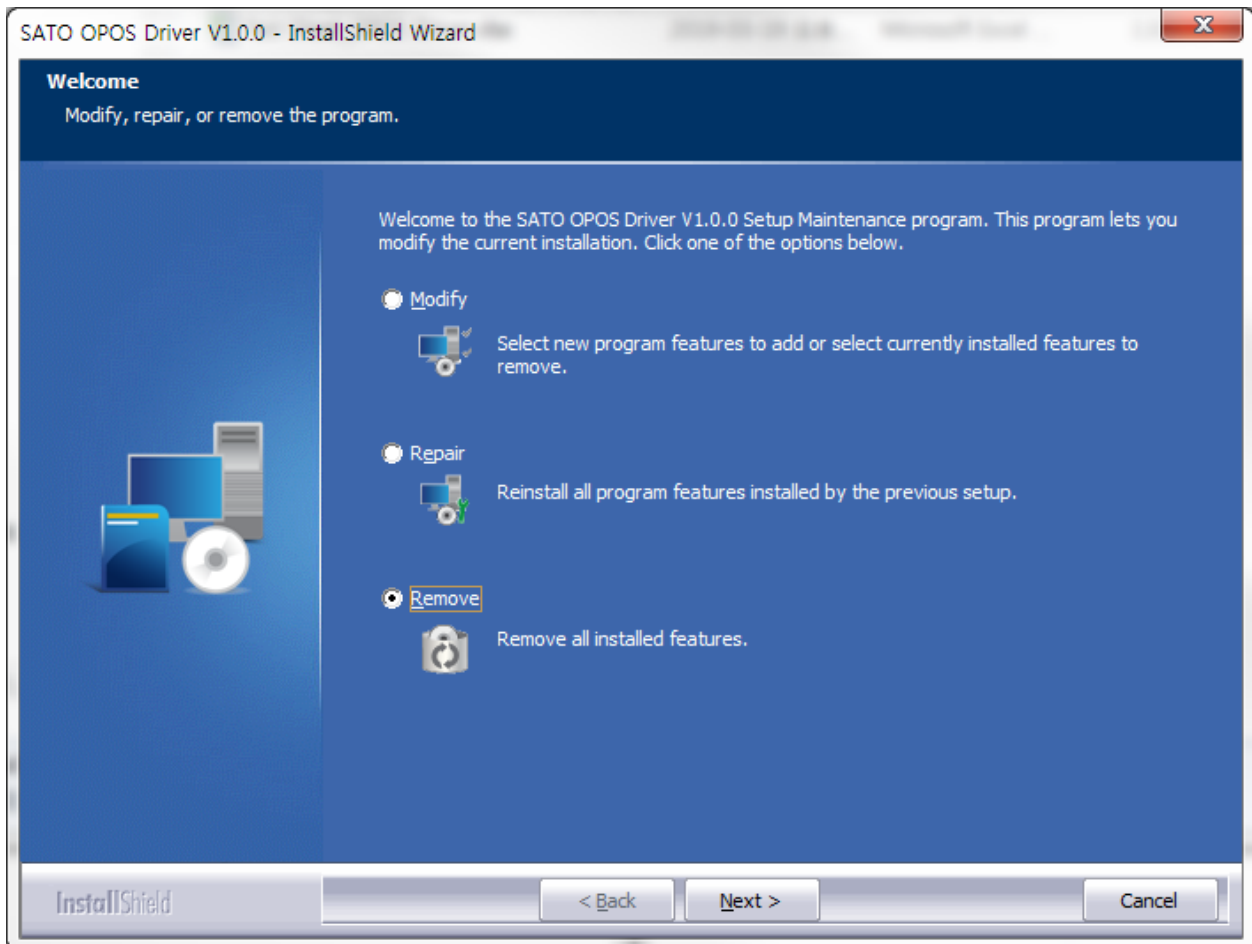


6) Installation of the OPOS driver will be proceeded.



2-2 Uninstallation

- To remove or modify SATO OPOS Driver, Select “SATO OPOS Driver” from “Add / Remove Programs” in Control Panel and remove or modify.



3. Precautions

- 1) The SATO OPOS software package installed supports the devices provided by SATO. Other devices do not guarantee normal operation.
- 2) If installed with other OPOS drivers, it may cause abnormal operation.

Copyright

© SATO CORPORATION. All rights reserved.

This user manual and all property of the product are protected under copyright law. It is strictly prohibited to copy, store, and transmit the whole or any part of the manual and any property of the product without the prior written approval of SATO CORPORATION. The information contained herein is designed only for use with this SATO product. SATO is not responsible for any direct or indirect damages, arising from or related to use of this information.

- The SATO logo is the registered trademark of SATO CORPORATION.
- All other brand or product names are trademarks of their respective companies or organizations.

SATO maintains ongoing efforts to enhance and upgrade the functions and quality of all our products.

In the following, product specifications and/or user manual content may be changed without prior notice.

Caution

Some semiconductor devices are easily damaged by static electricity. You should turn the printer "OFF", before you connect or remove the cables on the rear side, in order to guard the printer against the static electricity. If the printer is damaged by the static electricity, you should turn the printer "OFF".

Revision history

[illegible]