

Options of FX3-LX



Lithium-Ion battery

(P/N. WWFX35000)

- 14.4V, 1950 mAh
- Smart battery: show remaining battery % and number of charging cycles



Cutter Kit (P/N. WWFX35100)

- Supports both normal and linerless labels
- Supports the cutting of adhesive



Cradle Kit

(P/N. WWFX35501, for US)

(P/N. WWFX35502, for EU)

(P/N. WWFX3550N, for Asia)

- easy battery charging
- hide and protect the AC adapter



Wall mount Kit

(P/N. WWFX35700)

- Space-saving solution
- Easy installation
- Angle adjustment: 0 – 25 degree
- Battery mount kit not supported



Battery Mount Kit

(P/N. WWFX35300)

- required for battery operation



Partial Cutter Kit

(P/N. WWFX35200)

- Suitable for receipt printing
- Unavailable for linerless



WLAN/Bluetooth Kit

(P/N. WWFX35800)

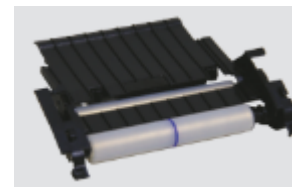
- WLAN: IEEE802.11 a/b/g/n/ac, Wifi certified
- Bluetooth: Version 4.1, MFi certified



Battery charger

(P/N. Y99122160001)

- 1ch battery charger



Linerless Kit

(P/N. WWFX35600)

- Supports linerless tear-off and linerless cutter both with a label taken sensor