

The impact of COVID-19 has led to the need of social distance requirements.

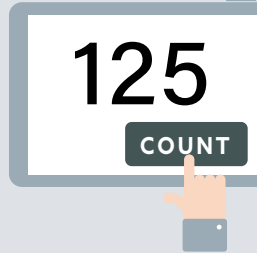
Contactless and accurate consumer count management

Many retail stores are required to respond to ever-changing conditions, including keeping employees and customers safe, in addition to their normal business operations. In order to ensure safety, there will be a need to set "capacity" according to the size of the sales floor and restrict entry if the number of customers exceeds a certain number.

/ CHALLENGES



Store staffs need to organise lines and count customer manually at store entrances and exits.

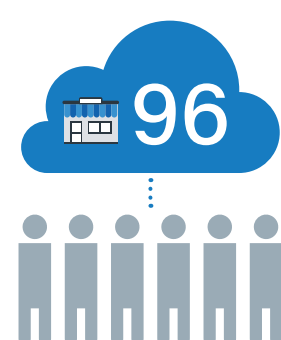


It is difficult to accurately control the number of customers by visual confirmation.

The label printer FX3-LX helps you to manage consumer flow in a non-contact and labour-saving, stress free manner.



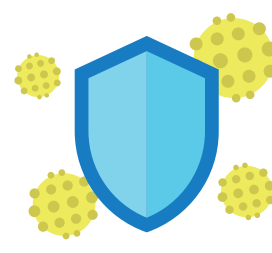
Contactless



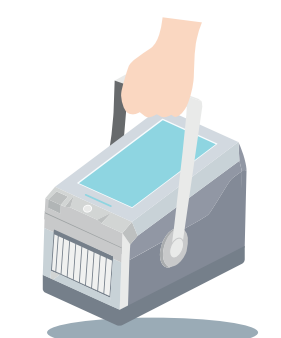
Automatic headcount



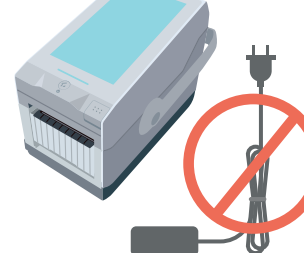
PC-less system



Antibacterial printer



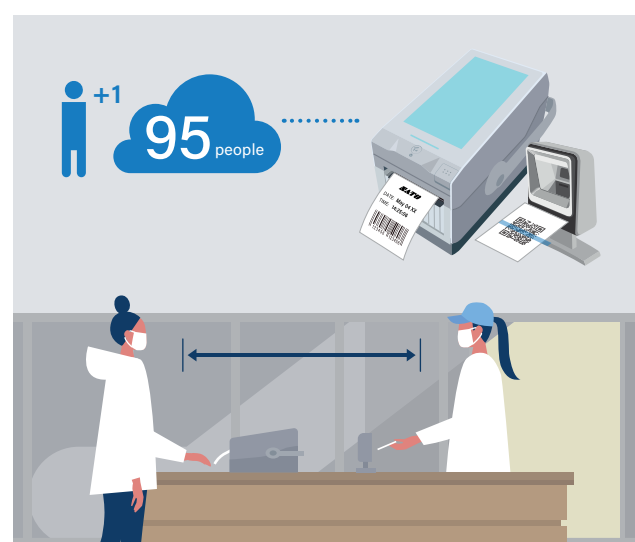
Portable & Easy installation



Battery Operation (Optional)



Operation flow



Store Staff places QR code under scanner to trigger printer to print label automatically, everytime customer goes in to store.



Consumer takes the label from printer and carry while shopping in the store. Label to be used as proof of scanning in.



Scan the barcode printed on the label when you leave the store.



The printer manages the number of customer in the store. If the capacity is exceeded, label will not be printed.

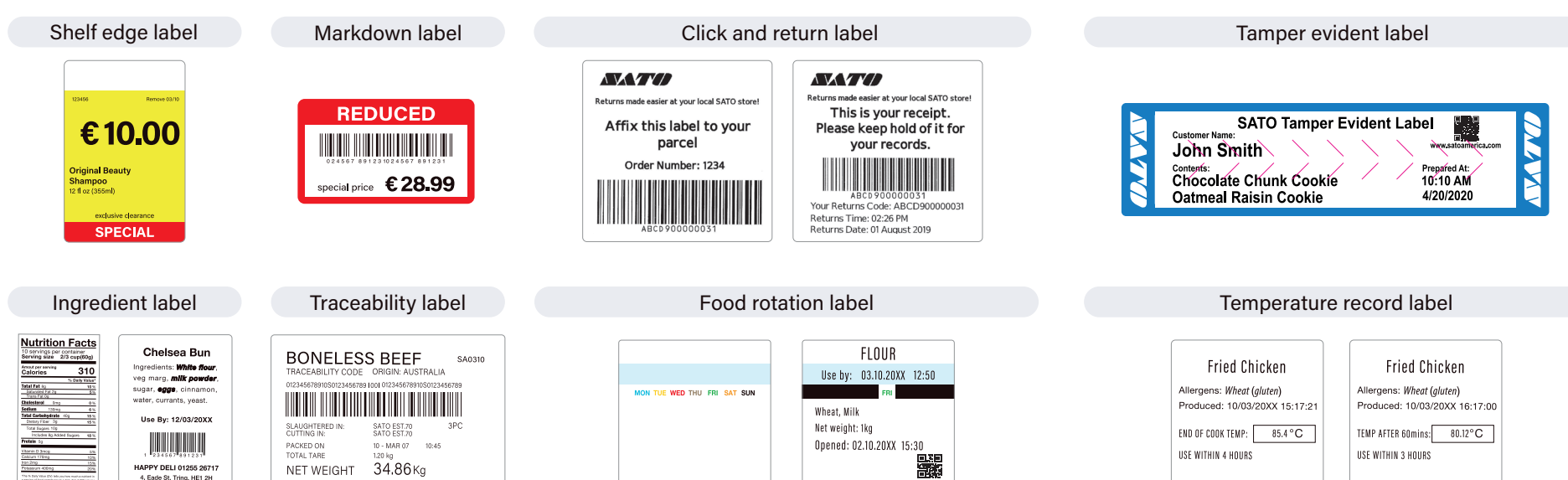
Area-specific management is available

If you have multiple sales areas, such as a grocery area or a pharmacy, you can also manage consumer flow of each area according to the purpose of the customer's visit.



/ Intelligent Label Printer FX3-LX

FX3-LX can be used as other application post COVID-19.



Need more information?

Contact your local SATO representative or visit satoeurope.com